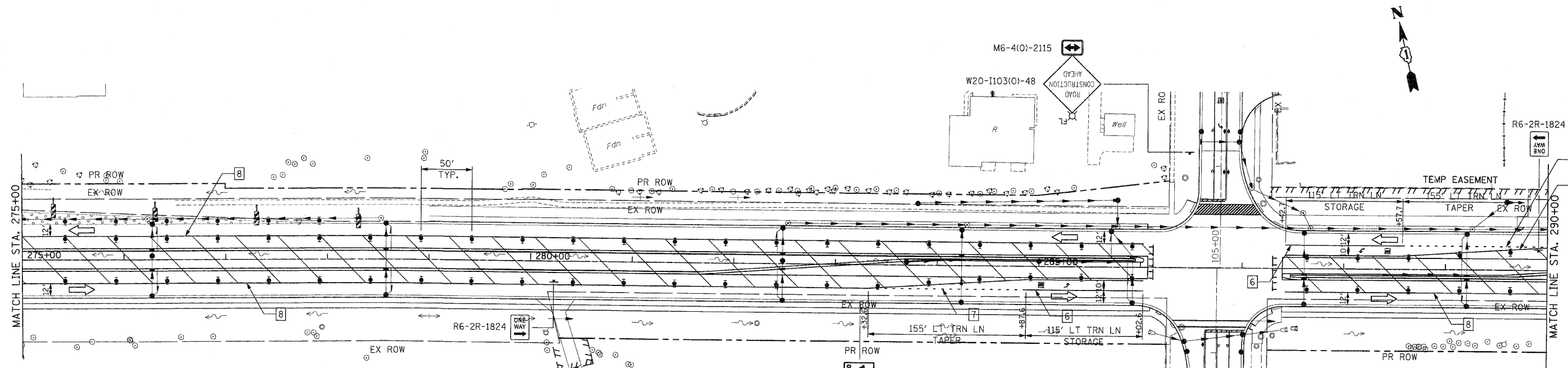
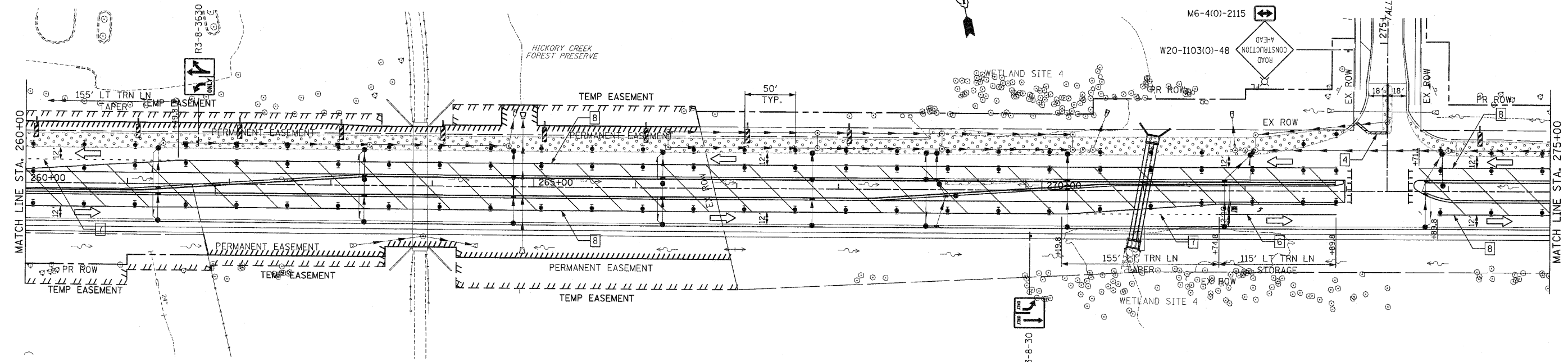


F.A.P. RTE.	SECTION	COUNTY	TOTAL SHEETS	SHEET NO
353	(12&13)WRS-3	WILL	1235	183
STA. 260+00		TO STA. 290+00		
FED. ROAD DIST. NO.	ILLINOIS	FED. AID PROJECT		

CONTRACT NO. 62479



**PAVEMENT MARKING KEY**

- 1 4" SOLID - WHITE
- 2 12" SOLID - YELLOW
- 3 4" SOLID - YELLOW @ 11" c-c
- 4 24" STOP BAR - WHITE
- 5 12" SOLID - WHITE
- 6 6" SOLID - WHITE
- 7 6"-6'/2" DASH-WHITE
- 8 4" SOLID - YELLOW
- 9 4" 30'/10' DASH WHITE

**LEGEND**

- ➔ ARROW BOARD
- ▨ TEMPORARY PAVEMENT
- ◻ TEMPORARY PAVEMENT CONSTRUCTED IN EARLIER STAGE
- ▤ CONSTRUCTION ZONE
- 1 TYPE III BARRICADE WITH FLASHING LIGHTS
- 2 TYPE II BARRICADE
- 3 DRUM OR VERTICAL BARRICADE
- 4 DIRECTION INDICATOR BARRICADE WITH STEADY BURN MONODIRECTIONAL LIGHT
- FL FLASHING LIGHT

MOKENA

REVISIONS	
NAME	DATE

ILLINOIS DEPARTMENT OF TRANSPORTATION  
**MAINTENANCE OF TRAFFIC**  
 STAGE 3  
 U.S. RTE. 30 (LINCOLN HIGHWAY)  
 STA. 260+00 TO STA. 290+00  
 SCALE : 1" = 50'  
 DATE : / /  
 DRAWN BY : BAE  
 CHECKED BY : GB