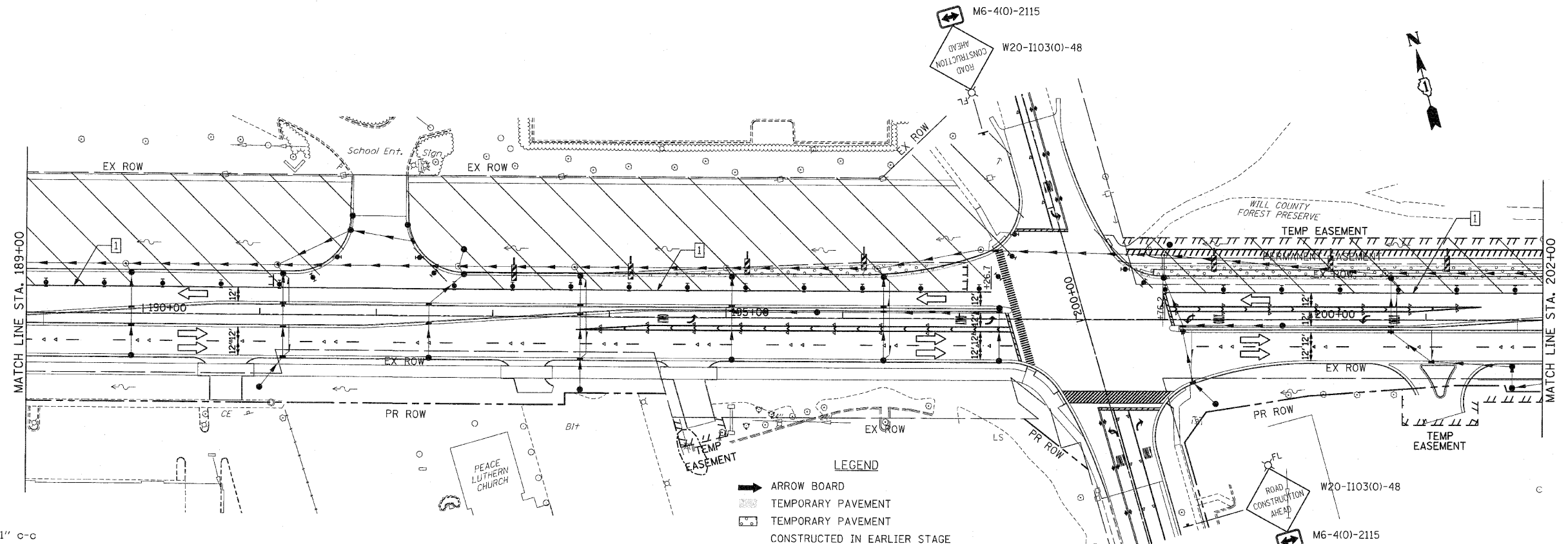
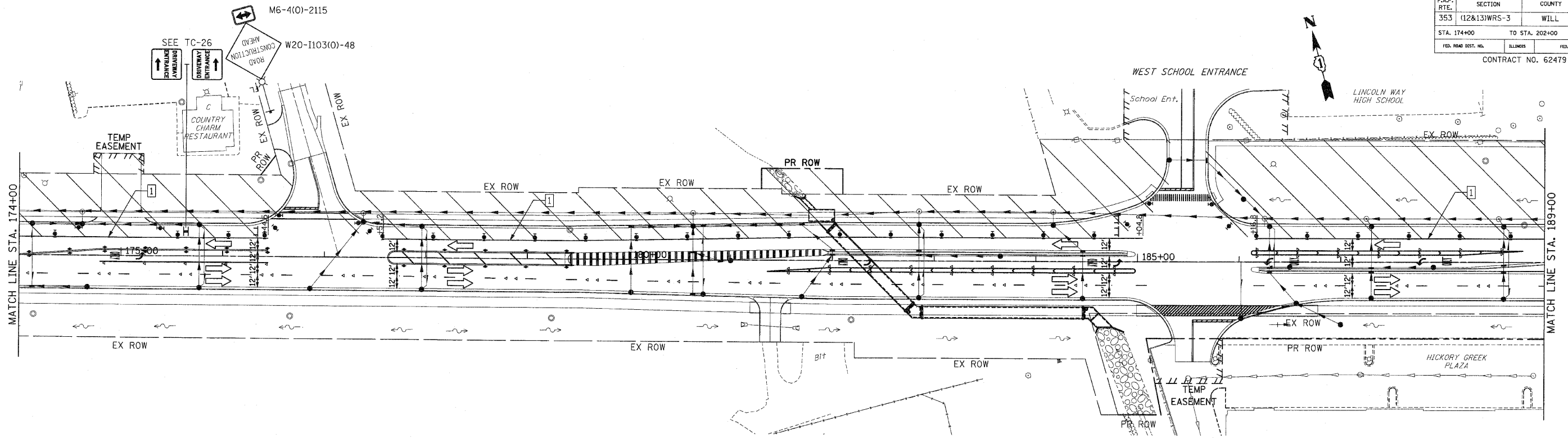


F.A.P. RTE.	SECTION	COUNTY	TOTAL SHEETS	SHEET NO.
353	(12&13)WRS-3	WILL	1235	191
STA. 174+00		TO STA. 202+00		
FED. ROAD DIST. NO.	ILLINOIS	FED. AID PROJECT		
CONTRACT NO. 62479				



PAVEMENT MARKING KEY

1	4" SOLID - WHITE
2	12" SOLID - YELLOW
3	4" SOLID - YELLOW @ 11" c-c
4	24" STOP BAR - WHITE
5	12" SOLID - WHITE
6	6" SOLID - WHITE
7	6"-6 1/2' DASH-WHITE
8	4" SOLID - YELLOW
9	4" 30'/10' DASH WHITE

LEGEND

→	ARROW BOARD
▨	TEMPORARY PAVEMENT
▨	TEMPORARY PAVEMENT CONSTRUCTED IN EARLIER STAGE
▨	CONSTRUCTION ZONE
⊥	TYPE III BARRICADE WITH FLASHING LIGHTS
⊥	TYPE II BARRICADE
⊥	DRUM OR VERTICAL BARRICADE
→	DIRECTION INDICATOR BARRICADE WITH STEADY BURN MONODIRECTIONAL LIGHT
⊥	FLASHING LIGHT

REVISIONS

NAME	DATE

ILLINOIS DEPARTMENT OF TRANSPORTATION
MAINTENANCE OF TRAFFIC
 STAGE 4
 U.S. RTE. 30 (LINCOLN HIGHWAY)
 STA. 174+00 TO STA. 202+00
 SCALE : 1" = 50'
 DATE : / /
 DRAWN BY : BAE
 CHECKED BY : GB