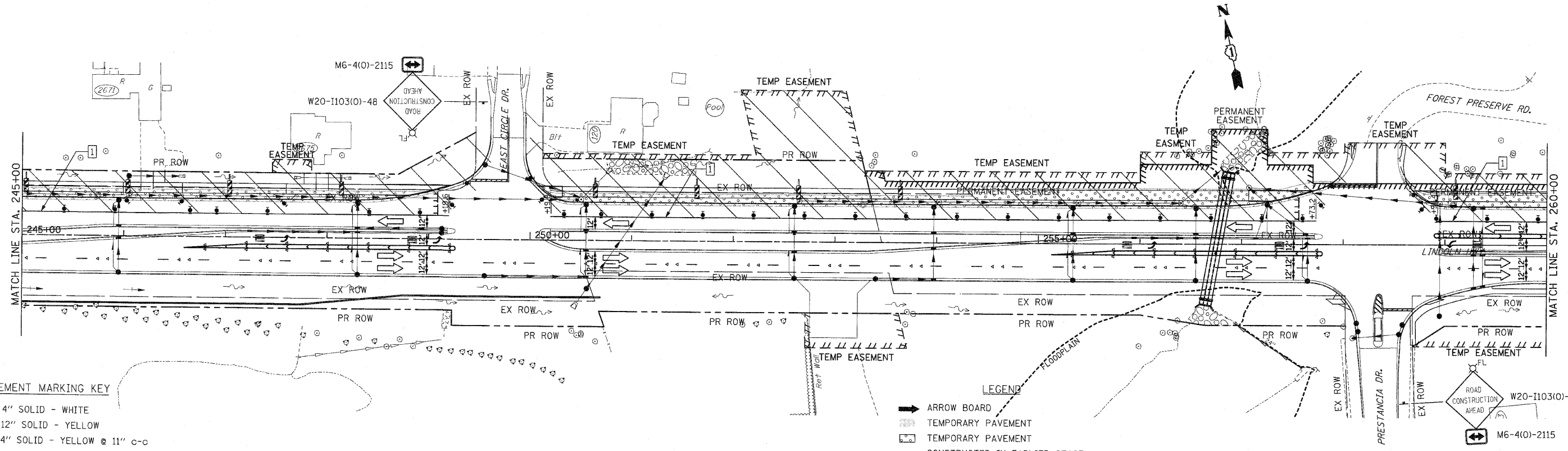
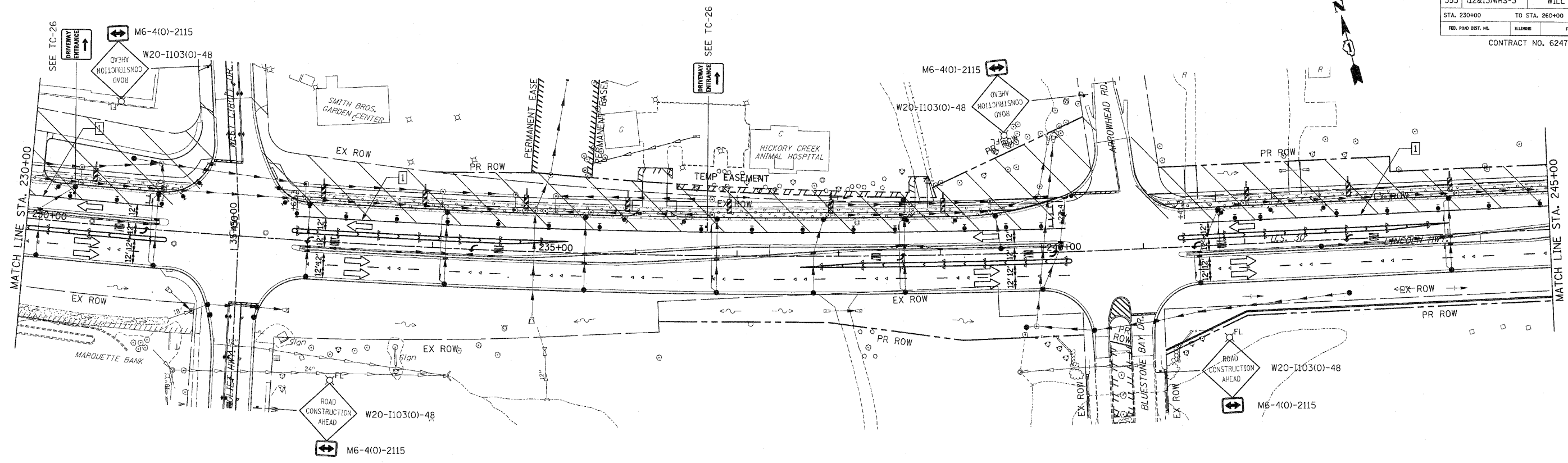


F.A.P. RTE.	SECTION	COUNTY	TOTAL SHEETS	SHEET NO.
353	(12&13)WRS-3	WILL	1235	193
STA. 230+00		TO STA. 260+00		
FED. ROAD DIST. NO.	ILLINOIS	FED. AID PROJECT		
CONTRACT NO. 62479				



- PAVEMENT MARKING KEY**
- 1 4" SOLID - WHITE
 - 2 12" SOLID - YELLOW
 - 3 4" SOLID - YELLOW @ 11" C-C
 - 4 24" STOP BAR - WHITE
 - 5 12" SOLID - WHITE
 - 6 6" SOLID - WHITE
 - 7 6"-6'/2" DASH-WHITE
 - 8 4" SOLID - YELLOW
 - 9 4" 30'/10" DASH WHITE

- LEGEND**
- ➔ ARROW BOARD
 - ▨ TEMPORARY PAVEMENT
 - ▨ TEMPORARY PAVEMENT CONSTRUCTED IN EARLIER STAGE
 - ▨ CONSTRUCTION ZONE
 - ⊥ TYPE III BARRICADE WITH FLASHING LIGHTS
 - ⊥ TYPE II BARRICADE
 - ⊥ DRUM OR VERTICAL BARRICADE
 - ⊥ DIRECTION INDICATOR BARRICADE WITH STEADY BURN MONODIRECTIONAL LIGHT
 - ⊥ FL FLASHING LIGHT

REVISIONS	
NAME	DATE

ILLINOIS DEPARTMENT OF TRANSPORTATION
MAINTENANCE OF TRAFFIC
 STAGE 4
 U.S. RTE. 30 (LINCOLN HIGHWAY)
 STA. 230+00 TO STA. 260+00
 SCALE : 1" = 50'
 DATE : / /
 DRAWN BY : BAE
 CHECKED BY : GB