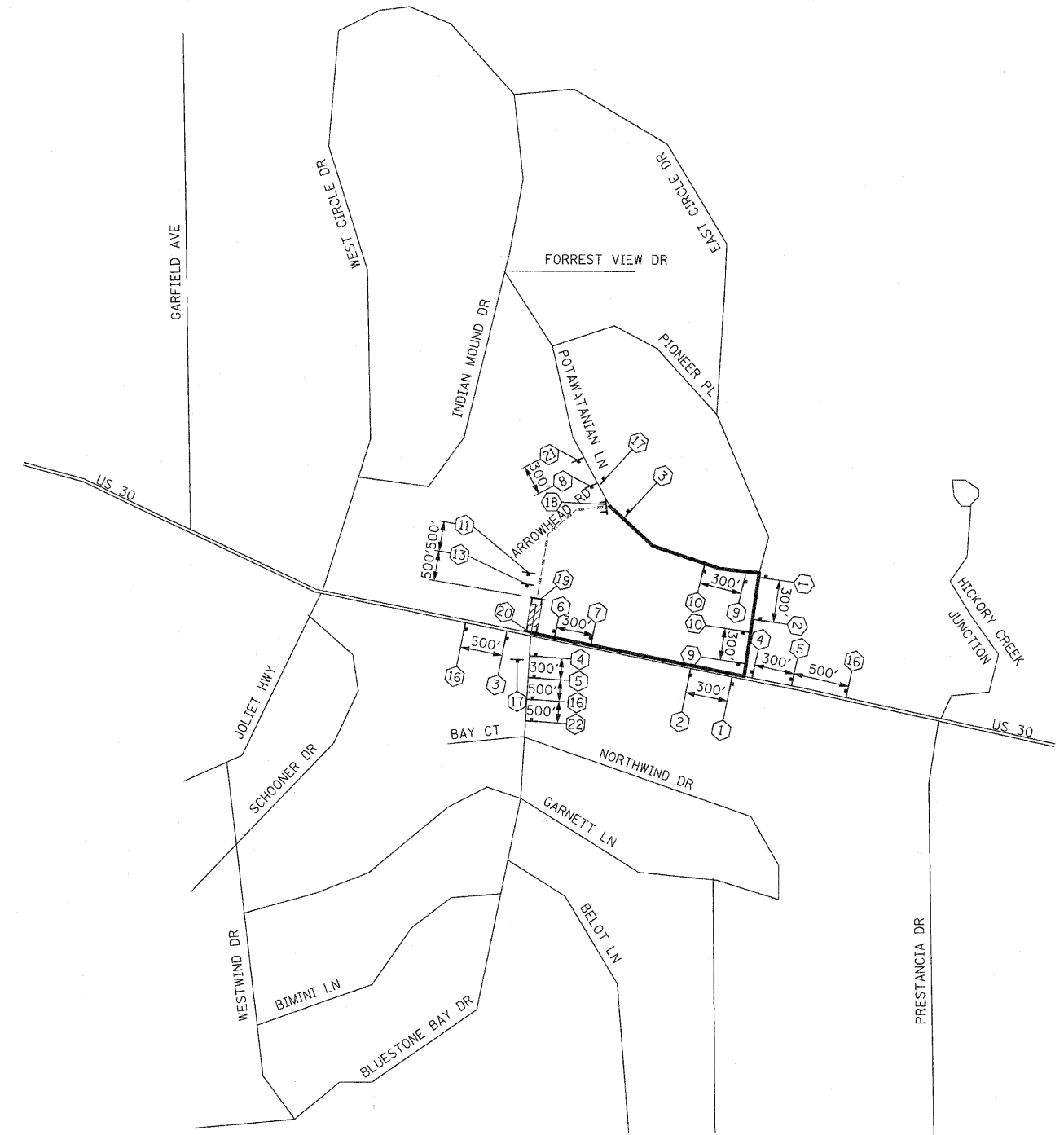


F.A.P. RTE.	SECTION	COUNTY	TOTAL SHEETS	SHEET NO.
353	(12&13)WRS-3	WILL	1235	212
STA.	TO STA.			
FED. ROAD DIST. NO.	ILLINOIS	FED. AID PROJECT		

CONTRACT NO. 62479

**SIGN LEGEND**

<p>1 M4-8-2412 M3-1-2412 SEE DETAIL M6-1L-2115</p>	<p>10 M4-8-2412 M3-3-2412 SEE DETAIL M5-1R-2115</p>	<p>17 M4-8A-2418</p>
<p>2 M4-8-2412 M3-1-2412 SEE DETAIL M5-1L-2115</p>	<p>11 ROAD CLOSED 500 FT W20-3-4848</p>	<p>18 ROAD CLOSED TO THRU TRAFFIC M4-10L-4818 MIN. 5 EACH TYPE III BARRICADE</p>
<p>3 M4-8-2412 M3-1-2412 SEE DETAIL M6-3-2115</p>	<p>12 ROAD CLOSED 1000 FT W20-3-4848</p>	<p>19 ROAD CLOSED R11-2-4830 MIN. 5 EACH TYPE III BARRICADE</p>
<p>4 M4-8-2412 M3-1-2412 SEE DETAIL M6-1R-2115</p>	<p>13 ROAD CLOSED AHEAD W20-3-4848</p>	<p>20 ROAD CLOSED TO THRU TRAFFIC M4-10R-4818 MIN. 5 EACH TYPE III BARRICADE</p>
<p>5 M4-8-2412 M3-1-2412 SEE DETAIL M5-1R-2115</p>	<p>14 DETOUR AHEAD W20-2-4848</p>	<p>21 DETOUR AHEAD W20-2-4848</p>
<p>6 M4-8-2412 M3-3-2412 SEE DETAIL M6-1L-2115</p>	<p>15 ROAD CLOSED 500 FT W20-3-4848</p>	<p>22 M3-1-2412 D3-4212 (BLACK ON ORANGE)</p>
<p>7 M4-8-2412 M3-3-2412 SEE DETAIL M5-1L-2115</p>	<p>16 DETOUR AHEAD W20-2-4848</p>	<p>23 ROAD CLOSED AHEAD W20-3-4848</p>
<p>8 M4-8-2412 M3-3-2412 SEE DETAIL M6-3-2115</p>	<p>22 ROAD CLOSED AHEAD W20-3-4848</p>	<p>23 ROAD CLOSED AHEAD W20-3-4848</p>
<p>9 M4-8-2412 M3-3-2412 SEE DETAIL M6-1R-2115</p>	<p>22 ROAD CLOSED AHEAD W20-3-4848</p>	<p>23 ROAD CLOSED AHEAD W20-3-4848</p>



- LEGEND**
- DETOUR ROUTE
  - - - PARTIALLY CLOSED ROADWAY
  - ▨ COMPLETELY CLOSED ROADWAY
  - MAJOR STREET
  - MINOR STREET
  - TYPE A MONODIRECTIONAL FLASHING LIGHT
  - ⊥ TYPE III BARRICADE
  - † SIGN

**ARROWHEAD ROAD**

4" BLACK LETTERS ON ORANGE  
REFLECTIVE BACKGROUND - 36" x 18"

**SIGN DETAIL**

REVISIONS		ILLINOIS DEPARTMENT OF TRANSPORTATION
NAME	DATE	
		<p><b>DETOUR PLAN STAGE 1A</b></p> <p>ARROWHEAD RD</p> <p>SCALE : 1" = NTS      DRAWN BY : BEC</p> <p>DATE : / /              CHECKED BY : CB</p>