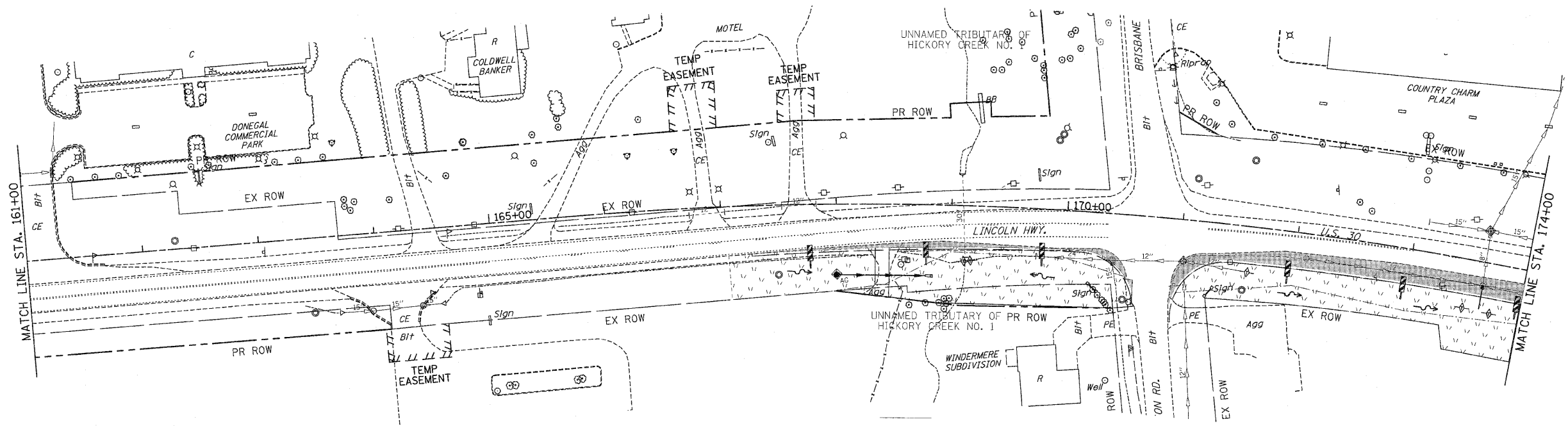
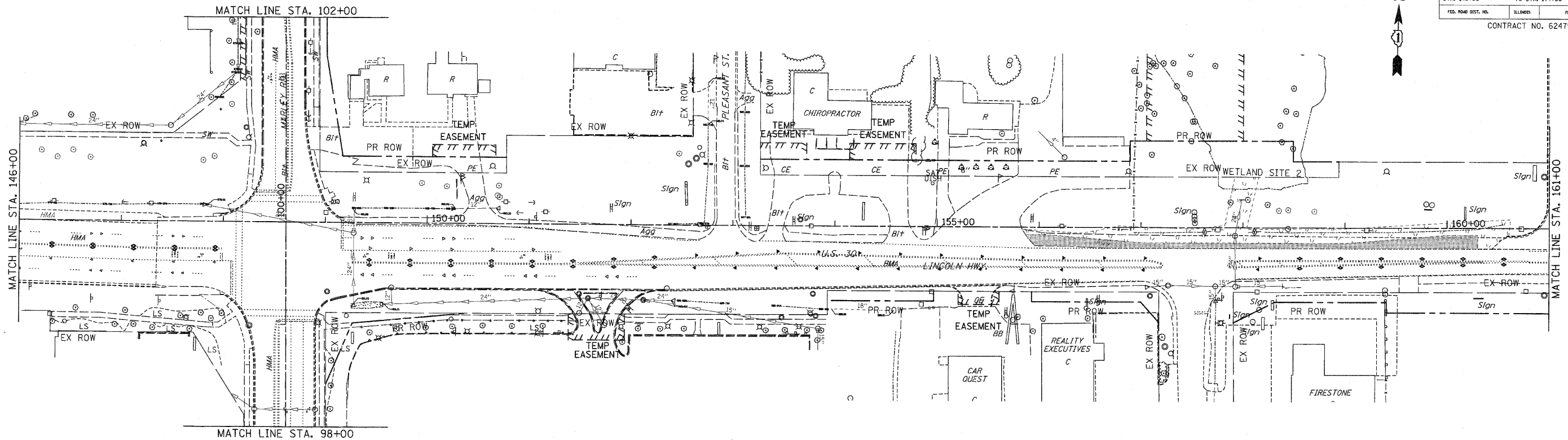


F.A.P. RTE.	SECTION	COUNTY	TOTAL SHEETS	SHEET NO.
353	(12&13)WRS-3	WILL.	1235	231
STA. 146+00	TO STA. 174+00			
FED. ROAD DIST. NO.	ILLINOIS	FED. AID PROJECT		
CONTRACT NO. 62479				



- EROSION CONTROL SYMBOLS**
- PERIMETER EROSION BARRIER
 - TEMPORARY FENCE
 - ABOVE GRADE INLET FILTER
 - INLET FILTER
 - TEMPORARY DITCH CHECK
 - RIPRAP
 - TEMPORARY SEEDING AND EROSION CONTROL BLANKET
 - CONSTRUCTION WORK ZONE
 - TEMPORARY PAVEMENT

- NOTES:**
- DRAINAGE STRUCTURE INLET FILTERS ARE TO BE PROVIDED AND MAINTAINED FOR ALL INLETS, CATCH BASINS AND DRAINAGE STRUCTURES. PAY ITEMS AND SPECIAL PROVISIONS HAVE BEEN INCLUDED FOR THIS WORK.
 - EROSION CONTROL BLANKET SHALL BE USED AT ALL LOCATIONS WHERE TEMPORARY SEEDING IS USED.

REVISIONS		ILLINOIS DEPARTMENT OF TRANSPORTATION
NAME	DATE	
		EROSION CONTROL PRE-STAGE 1 U.S. RTE. 30 (LINCOLN HIGHWAY) STA. 146+00 TO STA. 174+00 SCALE : 1" = 50' DRAWN BY : BAE DATE : / / CHECKED BY : GB