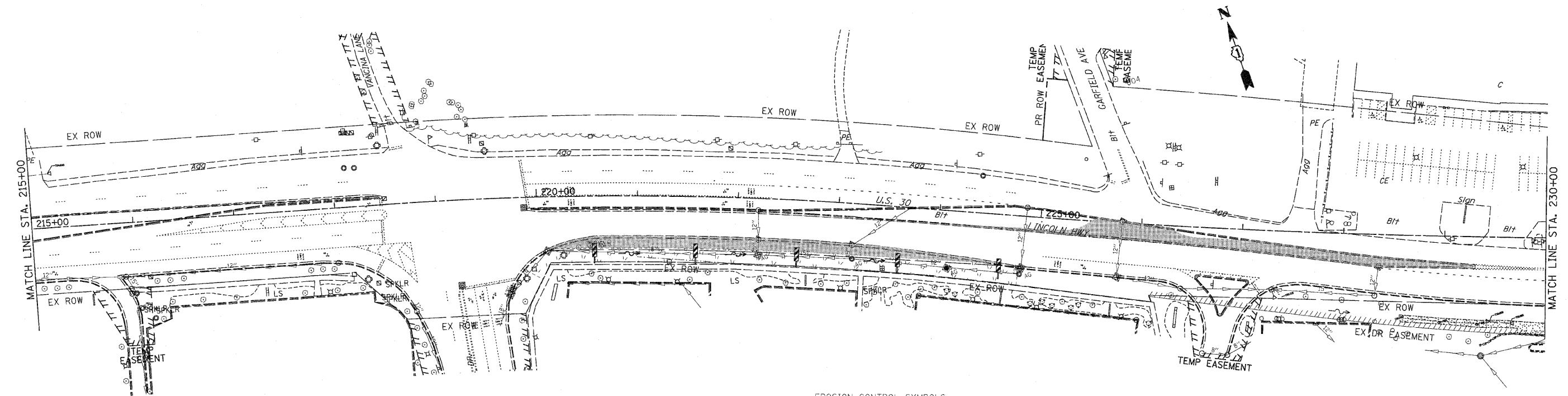
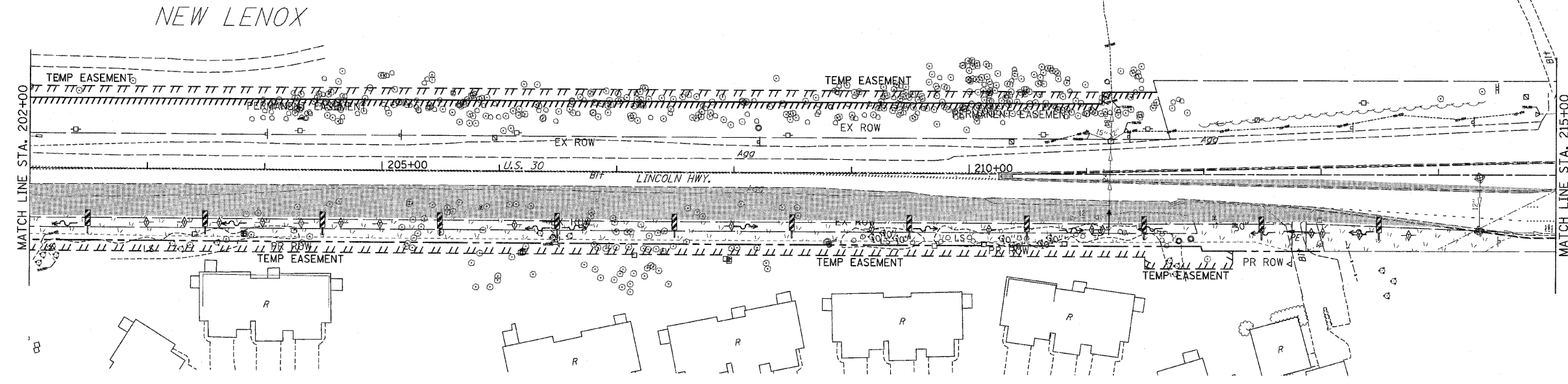


F.A.P. RTE.	SECTION	COUNTY	TOTAL SHEETS	SHEET NO
353	(12&13)WRS-3	WILL	1235	233
STA. 202+00		TO STA. 230+00		
FED. ROAD DIST. NO.	ILLINOIS	FED. AID PROJECT		

CONTRACT NO. 62479



NOTES:

1. DRAINAGE STRUCTURE INLET FILTERS ARE TO BE PROVIDED AND MAINTAINED FOR ALL INLETS, CATCH BASINS AND DRAINAGE STRUCTURES. PAY ITEMS AND SPECIAL PROVISIONS HAVE BEEN INCLUDED FOR THIS WORK.
2. THE CONTRACTOR MAY BE REQUIRED, BASED ON THE ENGINEER'S RECOMENDATION, TO IMPLEMENT SOME STAGE 1 OR STAGE 2 EROSION CONTROL MEASURES IN PRE-STAGE 1.
3. EROSION CONTROL BLANKET SHALL BE USED AT ALL LOCATIONS WHERE TEMPORARY SEEDING IS USED.

EROSION CONTROL SYMBOLS

- PERIMETER EROSION BARRIER
- TEMPORARY FENCE
- ABOVE GRADE INLET FILTER
- INLET FILTER
- TEMPORARY DITCH CHECK
- RIPRAP
- TEMPORARY SEEDING AND EROSION CONTROL BLANKET
- CONSTRUCTION WORK ZONE
- TEMPORARY PAVEMENT

REVISIONS	
NAME	DATE

ILLINOIS DEPARTMENT OF TRANSPORTATION
EROSION CONTROL PLANS
 PRE-STAGE 1
 U.S. RTE. 30 (LINCOLN HIGHWAY)
 STA. 202+00 TO STA. 230+00
 SCALE : 1" = 50'
 DATE : / / DRAWN BY : BAE
 CHECKED BY : GB