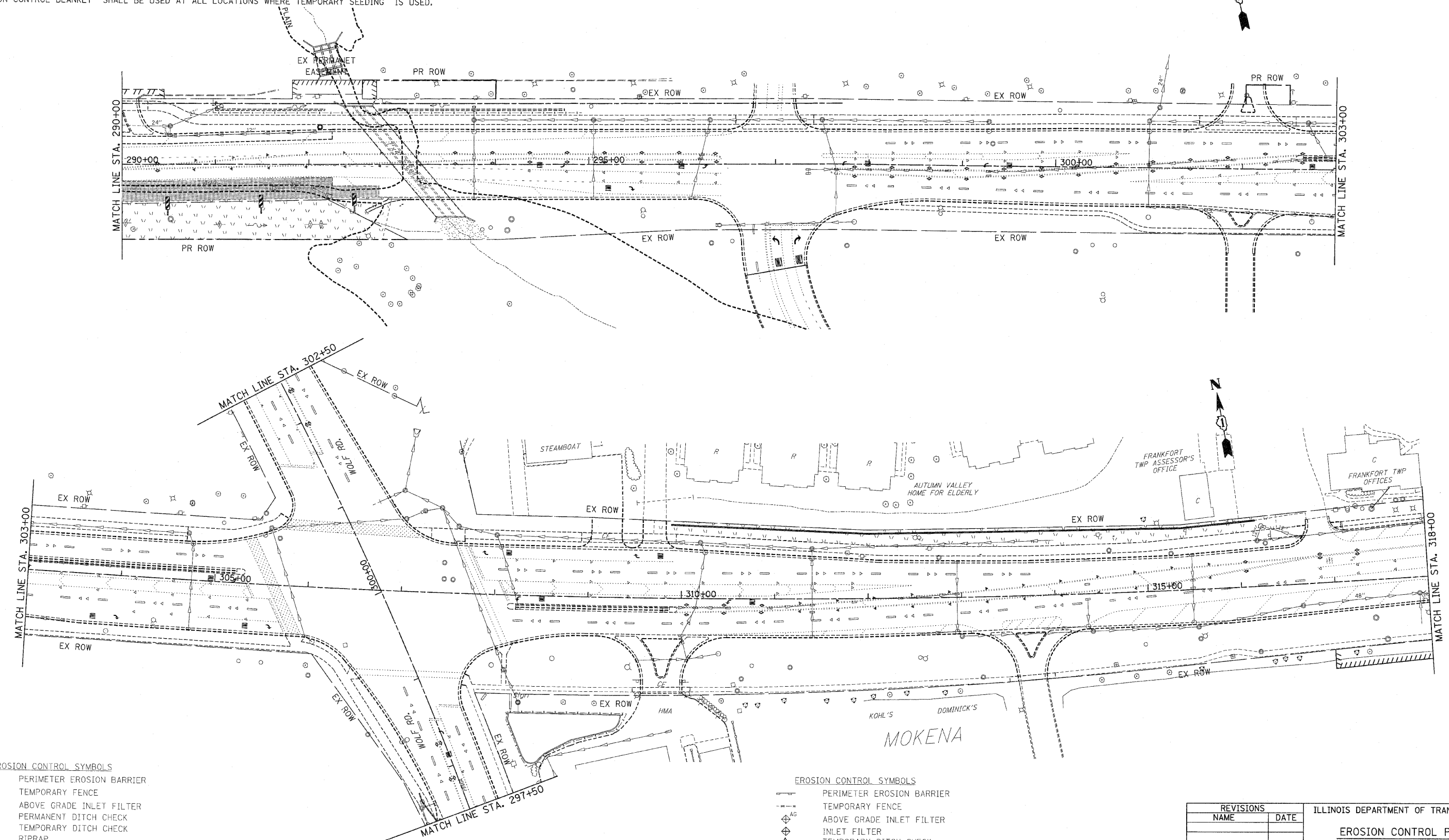


NOTES:

1. DRAINAGE STRUCTURE INLET FILTERS ARE TO BE PROVIDED AND MAINTAINED FOR ALL INLETS, CATCH BASINS AND DRAINAGE STRUCTURES. PAY ITEMS AND SPECIAL PROVISIONS HAVE BEEN INCLUDED FOR THIS WORK.
2. THE CONTRACTOR MAY BE REQUIRED, BASED ON THE ENGINEER'S RECOMMENDATION, TO IMPLEMENT SOME STAGE 1 OR STAGE 2 EROSION CONTROL MEASURES IN PRE-STAGE 1.
3. EROSION CONTROL BLANKET SHALL BE USED AT ALL LOCATIONS WHERE TEMPORARY SEEDING IS USED.

F.A.P. RTE.	SECTION	COUNTY	TOTAL SHEETS	SHEET NO.
353	(12&13)WRS-3	WILL	1235	236
STA. 290+00		TO STA. 318+00		
FED. ROAD DIST. NO.	ILLINOIS	FED. AID PROJECT		

CONTRACT NO. 62479



EROSION CONTROL SYMBOLS

	PERIMETER EROSION BARRIER
	TEMPORARY FENCE
	ABOVE GRADE INLET FILTER
	PERMANENT DITCH CHECK
	TEMPORARY DITCH CHECK
	RIPRAP
	TEMPORARY SEEDING AND EROSION CONTROL BLANKET
	CONSTRUCTION WORK ZONE
	TEMPORARY PAVEMENT

EROSION CONTROL SYMBOLS

	PERIMETER EROSION BARRIER
	TEMPORARY FENCE
	ABOVE GRADE INLET FILTER
	INLET FILTER
	TEMPORARY DITCH CHECK
	RIPRAP
	TEMPORARY SEEDING AND EROSION CONTROL BLANKET
	CONSTRUCTION WORK ZONE
	TEMPORARY PAVEMENT

REVISIONS	
NAME	DATE

ILLINOIS DEPARTMENT OF TRANSPORTATION
EROSION CONTROL PLANS
 PRE-STAGE 1
 U.S. RTE. 30 (LINCOLN HIGHWAY)
 STA. 290+00 TO STA. 318+00
 SCALE : 1" = 50'
 DATE : / /
 DRAWN BY : BAE
 CHECKED BY : GB