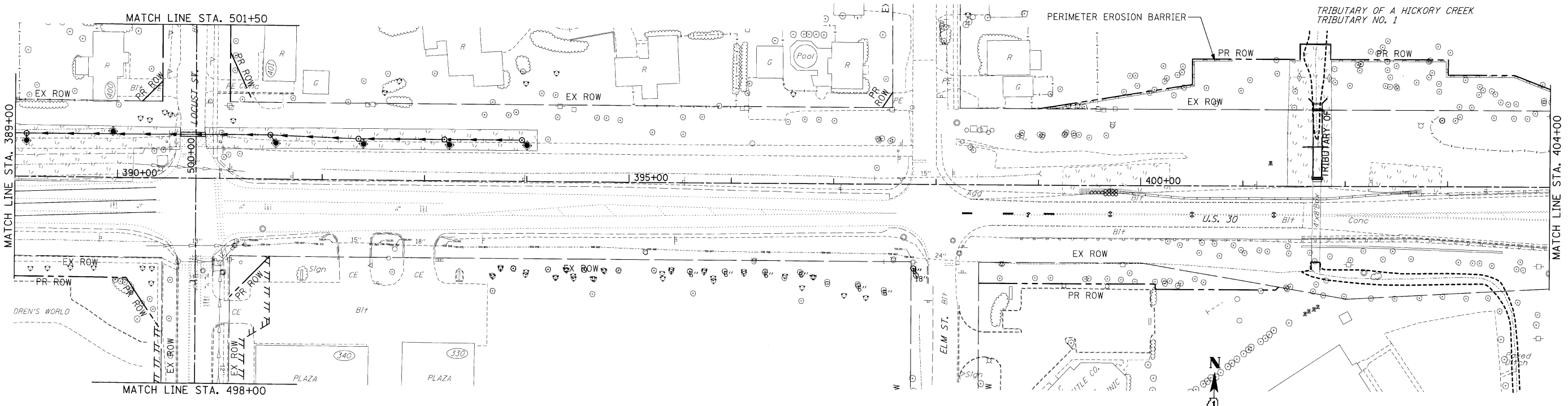
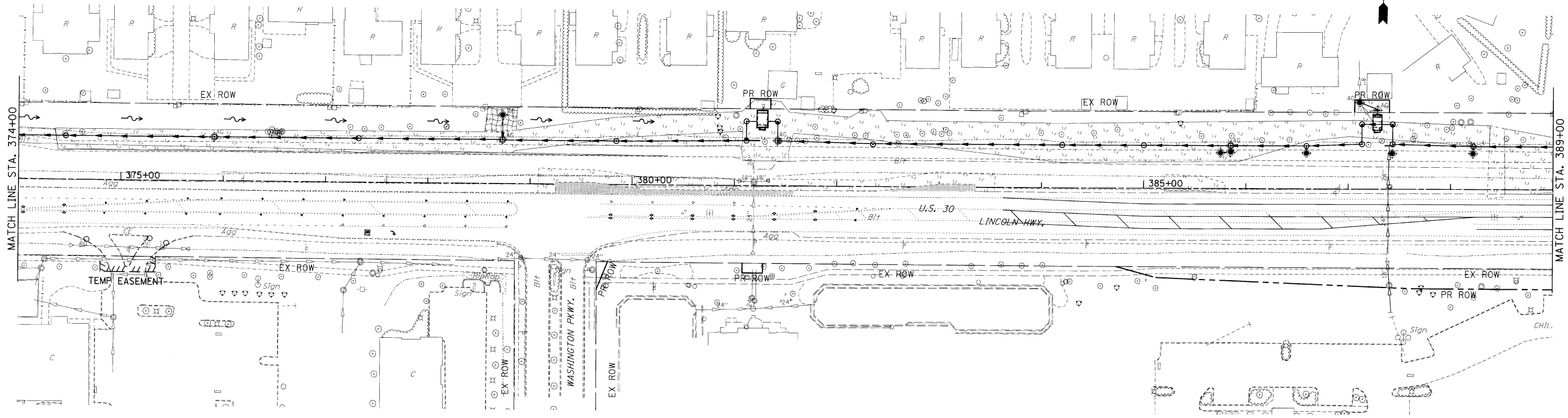


F.A.P. RTE.	SECTION	COUNTY	TOTAL SHEETS	SHEET NO.
353	(12&13)WRS-3	WILL	1235	239
STA. 374+00		TO STA. 404+00		
FED. ROAD DIST. NO.	ILLINOIS	FED. AID PROJECT		
CONTRACT NO. 62479				



NOTES:

1. DRAINAGE STRUCTURE INLET FILTERS ARE TO BE PROVIDED AND MAINTAINED FOR ALL INLETS, CATCH BASINS AND DRAINAGE STRUCTURES. PAY ITEMS AND SPECIAL PROVISIONS HAVE BEEN INCLUDED FOR THIS WORK.
2. THE CONTRACTOR MAY BE REQUIRED, BASED ON THE ENGINEER'S RECOMMENDATION, TO IMPLEMENT SOME STAGE 1 OR STAGE 2 EROSION CONTROL MEASURES IN PRE-STAGE 1.
3. EROSION CONTROL BLANKET SHALL BE USED AT ALL LOCATIONS WHERE TEMPORARY SEEDING IS USED.

EROSION CONTROL SYMBOLS

	PERIMETER EROSION BARRIER
	TEMPORARY FENCE
	ABOVE GRADE INLET FILTER
	INLET FILTER
	TEMPORARY DITCH CHECK
	RIPRAP
	TEMPORARY SEEDING AND EROSION CONTROL BLANKET
	CONSTRUCTION WORK ZONE
	TEMPORARY PAVEMENT

REVISIONS		ILLINOIS DEPARTMENT OF TRANSPORTATION
NAME	DATE	
		<p align="center"><b>EROSION CONTROL PLANS</b></p> <p align="center">PRE-STAGE 1</p> <p align="center">U.S. RTE. 30 (LINCOLN HIGHWAY)</p> <p align="center">STA. 374+00 TO STA. 404+00</p> <p>SCALE : 1" = 50'      DRAWN BY : BAE</p> <p>DATE : / /              CHECKED BY : GB</p>