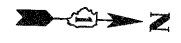
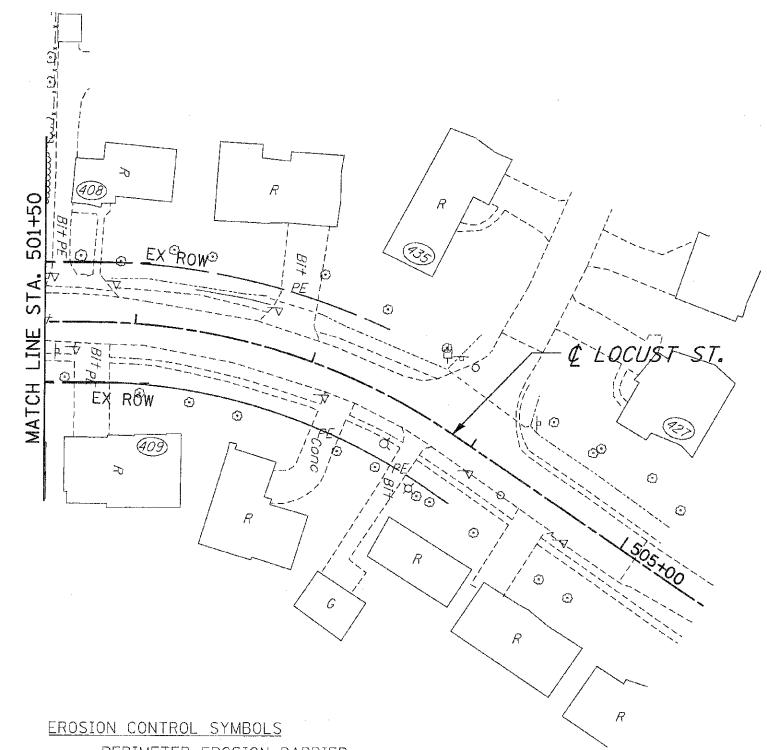
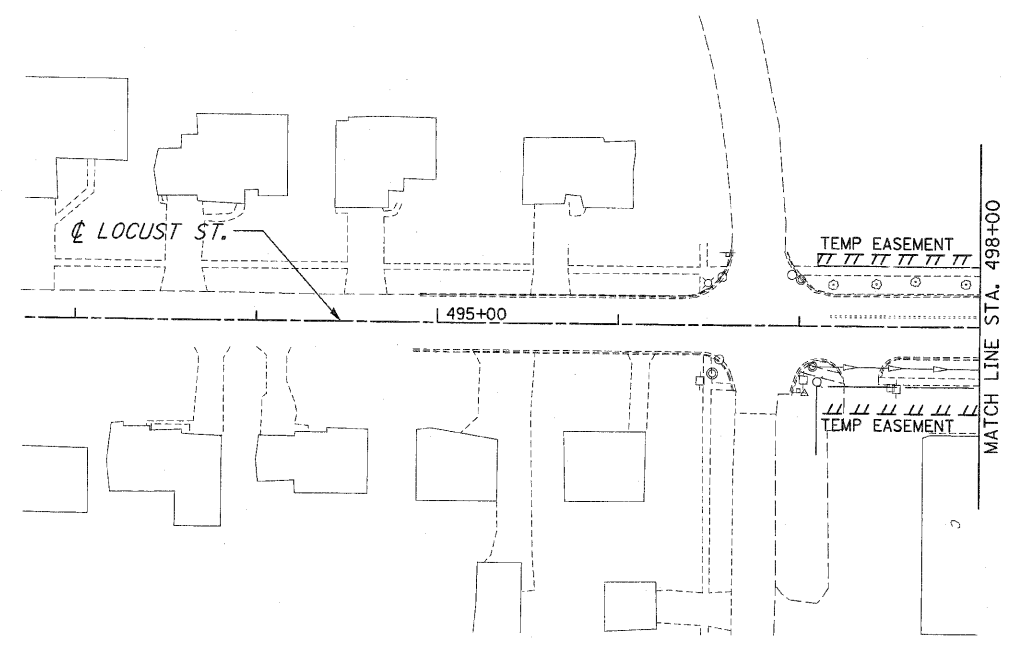


F.A.P. RTE.	SECTION	COUNTY	TOTAL SHEETS	SHEET NO
353	(12&13)WRS-3	WILL	1235	243
STA.		TO STA.		
FED. ROAD DIST. NO.		ILLINOIS	FED. AID PROJECT	

CONTRACT NO. 62479



- EROSION CONTROL SYMBOLS**
- PERIMETER EROSION BARRIER
 - TEMPORARY FENCE
 - ABOVE GRADE INLET FILTER
 - INLET FILTER
 - TEMPORARY DITCH CHECK
 - RIPRAP
 - TEMPORARY SEEDING AND EROSION CONTROL BLANKET
 - CONSTRUCTION WORK ZONE
 - TEMPORARY PAVEMENT

NOTES:

1. DRAINAGE STRUCTURE INLET FILTERS ARE TO BE PROVIDED AND MAINTAINED FOR ALL INLETS, CATCH BASINS AND DRAINAGE STRUCTURES. PAY ITEMS AND SPECIAL PROVISIONS HAVE BEEN INCLUDED FOR THIS WORK.
2. THE CONTRACTOR MAY BE REQUIRED, BASED ON THE ENGINEER'S RECOMMENDATION, TO IMPLEMENT SOME STAGE 1 OR STAGE 2 EROSION CONTROL MEASURES IN PRE-STAGE 1.
3. EROSION CONTROL BLANKET SHALL BE USED AT ALL LOCATIONS WHERE TEMPORARY SEEDING IS USED.

REVISIONS	
NAME	DATE

ILLINOIS DEPARTMENT OF TRANSPORTATION
EROSION CONTROL PLANS
 PRE-STAGE 1
 LOCUST ST.
 SCALE : 1" = 50'
 DATE : / / DRAWN BY : BAE
 CHECKED BY : GB