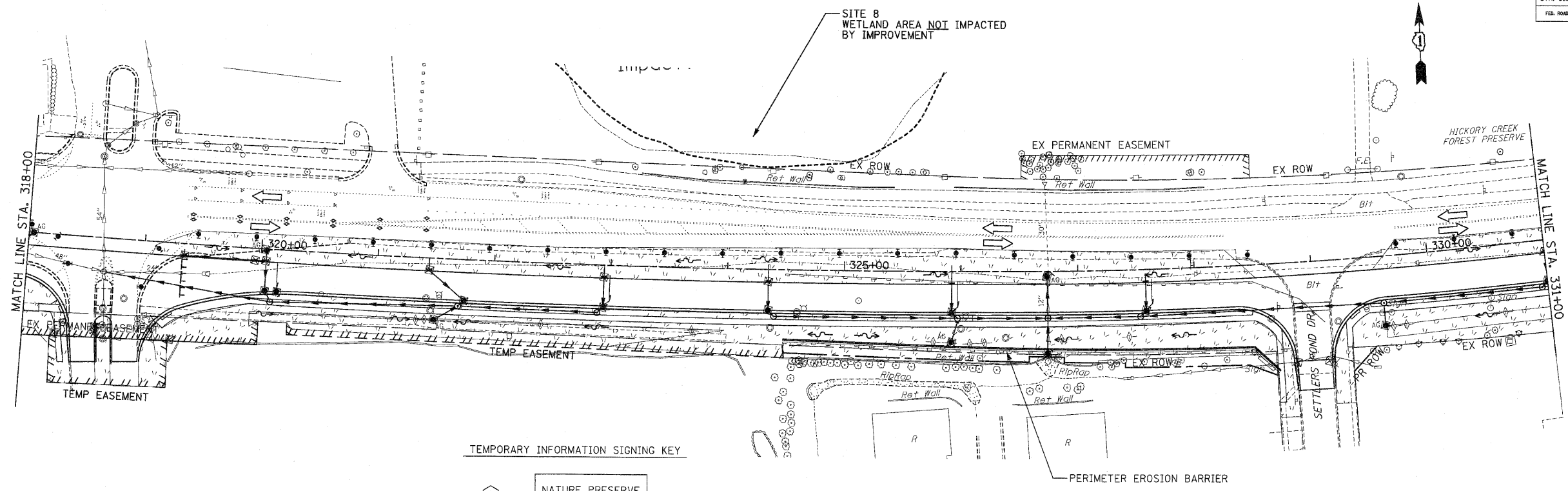
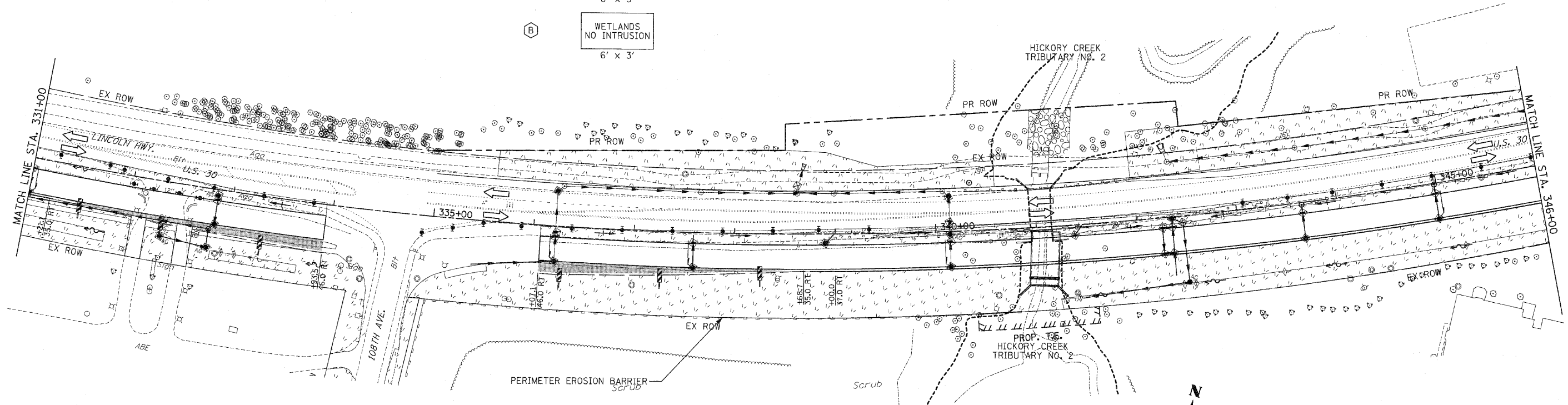


F.A.P. RTE. NO.	SECTION	COUNTY	TOTAL SHEETS	SHEET NO.
353	(12&13)WRS-3	WILL	1235	251
STA. 318+00		TO STA. 346+00		
FED. ROAD DIST. NO.	ILLINOIS	FED. AID PROJECT		
CONTRACT NO. 62479				



TEMPORARY INFORMATION SIGNING KEY

- (A) NATURE PRESERVE NO INTRUSION
8' x 3'
- (B) WETLANDS NO INTRUSION
6' x 3'



EROSION CONTROL SYMBOLS

- PERIMETER EROSION BARRIER
- - - TEMPORARY FENCE
- ⊕ ABOVE GRADE INLET FILTER
- ⊕ INLET FILTER
- ⊕ TEMPORARY DITCH CHECK
- ▨ RIPRAP
- ▨ TEMPORARY SEEDING AND EROSION CONTROL BLANKET
- ▨ CONSTRUCTION WORK ZONE
- ▨ TEMPORARY PAVEMENT
- ▨ TEMPORARY PAVEMENT CONSTRUCTED IN EARLIER STAGES

- NOTES:
- DRAINAGE STRUCTURE INLET FILTERS ARE TO BE PROVIDED AND MAINTAINED FOR ALL INLETS, CATCH BASINS AND DRAINAGE STRUCTURES. PAY ITEMS AND SPECIAL PROVISIONS HAVE BEEN INCLUDED FOR THIS WORK.
 - EROSION CONTROL BLANKET SHALL BE USED AT ALL LOCATIONS WHERE TEMPORARY SEEDING IS USED.

REVISIONS		ILLINOIS DEPARTMENT OF TRANSPORTATION
NAME	DATE	
		EROSION CONTROL PLANS STAGE 1 U.S. RTE. 30 (LINCOLN HIGHWAY) STA. 318+00 TO STA. 346+00 SCALE : 1" = 50' DRAWN BY : BAE DATE : 10/12/2010 CHECKED BY : GB