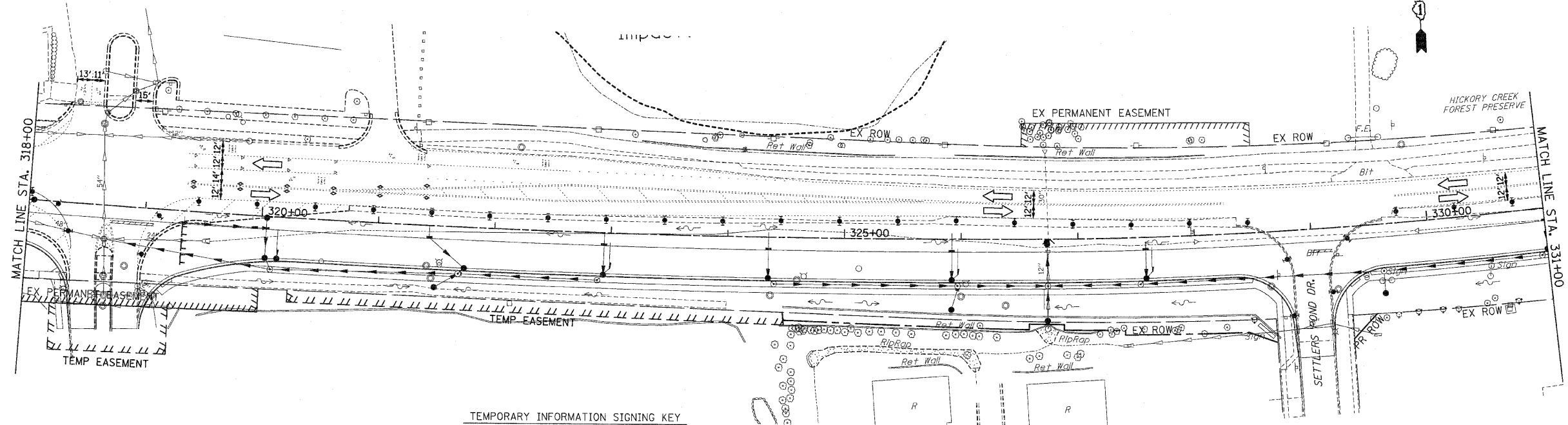


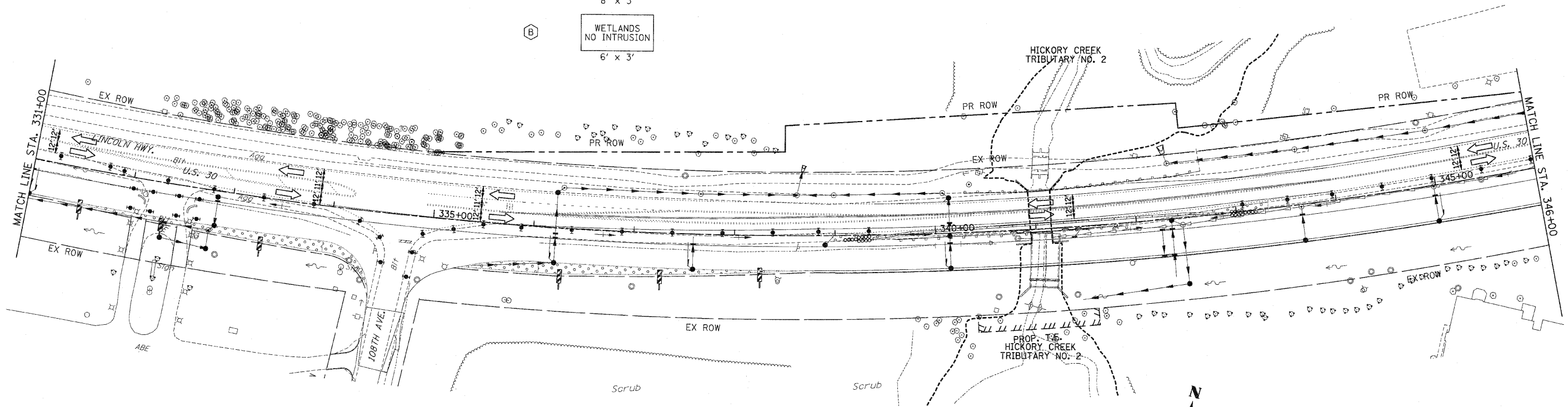
F.A.P. RTE.	SECTION	COUNTY	TOTAL SHEETS	SHEET NO.
353	(12&13)WRS-3	WILL	1235	264
STA. 318+00		TO STA. 346+00		
FED. ROAD DIST. NO.	ILLINOIS	FED. AID PROJECT		

CONTRACT NO. 62479



TEMPORARY INFORMATION SIGNING KEY

- (A) NATURE PRESERVE
NO INTRUSION
8' x 3'
- (B) WETLANDS
NO INTRUSION
6' x 3'



EROSION CONTROL SYMBOLS

- PERIMETER EROSION BARRIER
- - - TEMPORARY FENCE
- AG ABOVE GRADE INLET FILTER
- ◇ INLET FILTER
- ◇ TEMPORARY DITCH CHECK
- ◇ RIPRAP
- ▨ TEMPORARY SEEDING AND EROSION CONTROL BLANKET
- ▨ CONSTRUCTION WORK ZONE
- ▨ TEMPORARY PAVEMENT
- ▨ TEMPORARY PAVEMENT CONSTRUCTED IN EARLIER STAGES

NOTES:

- DRAINAGE STRUCTURE INLET FILTERS ARE TO BE PROVIDED AND MAINTAINED FOR ALL INLETS, CATCH BASINS AND DRAINAGE STRUCTURES. PAY ITEMS AND SPECIAL PROVISIONS HAVE BEEN INCLUDED FOR THIS WORK.
- EROSION CONTROL BLANKET SHALL BE USED AT ALL LOCATIONS WHERE TEMPORARY SEEDING IS USED.

REVISIONS		ILLINOIS DEPARTMENT OF TRANSPORTATION
NAME	DATE	
		EROSION CONTROL PLANS STAGE 2 U.S. RTE. 30 (LINCOLN HIGHWAY) STA. 318+00 TO STA. 346+00 SCALE : 1" = 50' DRAWN BY : BAE DATE : 10/12/2010 CHECKED BY : GB