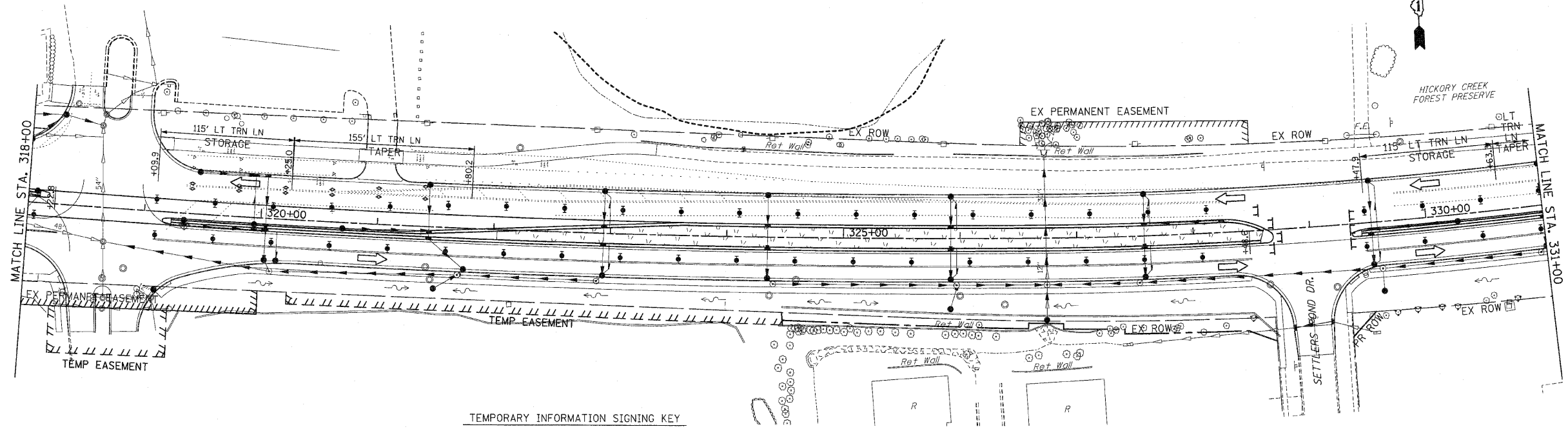
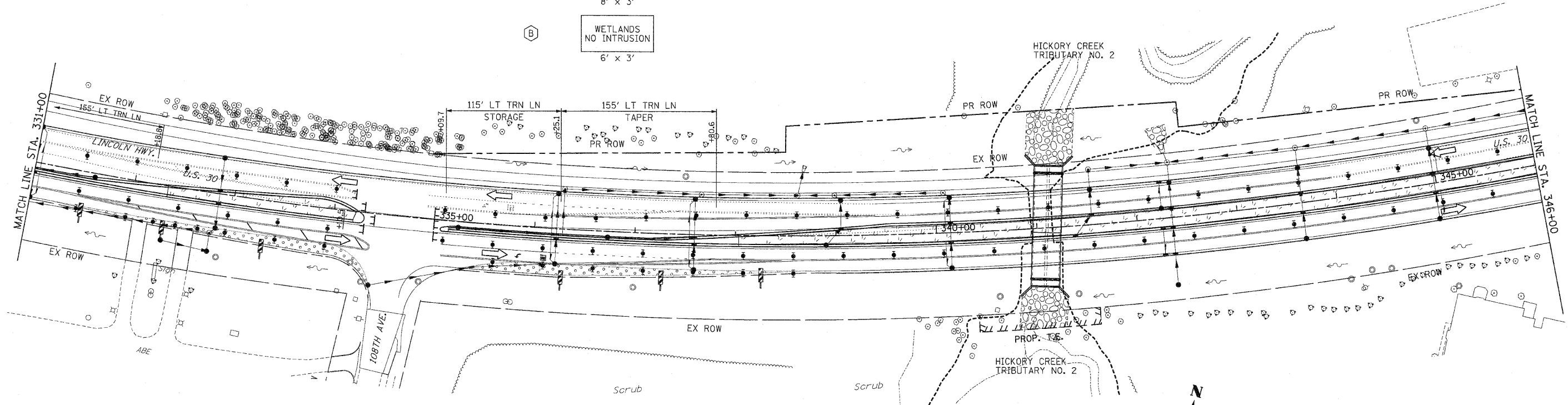


F.A.P. RTE.	SECTION	COUNTY	TOTAL SHEETS	SHEET NO
353	(12&13)WRS-3	WILL	1235	285
STA. 318+00		TO STA. 346+00		
FED. ROAD DIST. NO.	ILLINOIS	FED. AID PROJECT		
CONTRACT NO. 62479				



TEMPORARY INFORMATION SIGNING KEY

- (A) NATURE PRESERVE
NO INTRUSION
8' x 3'
- (B) WETLANDS
NO INTRUSION
6' x 3'



- EROSION CONTROL SYMBOLS
- PERIMETER EROSION BARRIER
 - - - TEMPORARY FENCE
 - ◇ ABOVE GRADE INLET FILTER
 - ◇ INLET FILTER
 - ◇ TEMPORARY DITCH CHECK
 - ◇ RIPRAP
 - ▨ TEMPORARY SEEDING AND EROSION CONTROL BLANKET
 - ▨ CONSTRUCTION WORK ZONE
 - ▨ TEMPORARY PAVEMENT
 - ▨ TEMPORARY PAVEMENT CONSTRUCTED IN EARLIER STAGES

- NOTES:
- DRAINAGE STRUCTURE INLET FILTERS ARE TO BE PROVIDED AND MAINTAINED FOR ALL INLETS, CATCH BASINS AND DRAINAGE STRUCTURES. PAY ITEMS AND SPECIAL PROVISIONS HAVE BEEN INCLUDED FOR THIS WORK.
 - EROSION CONTROL BLANKET SHALL BE USED AT ALL LOCATIONS WHERE TEMPORARY SEEDING IS USED.

REVISIONS		ILLINOIS DEPARTMENT OF TRANSPORTATION
NAME	DATE	
		EROSION CONTROL PLANS STAGE 4 U.S. RTE. 30 (LINCOLN HIGHWAY) STA. 318+00 TO STA. 346+00 SCALE : 1" = 50' DATE : 10/12/2010 DRAWN BY : BAE CHECKED BY : GB