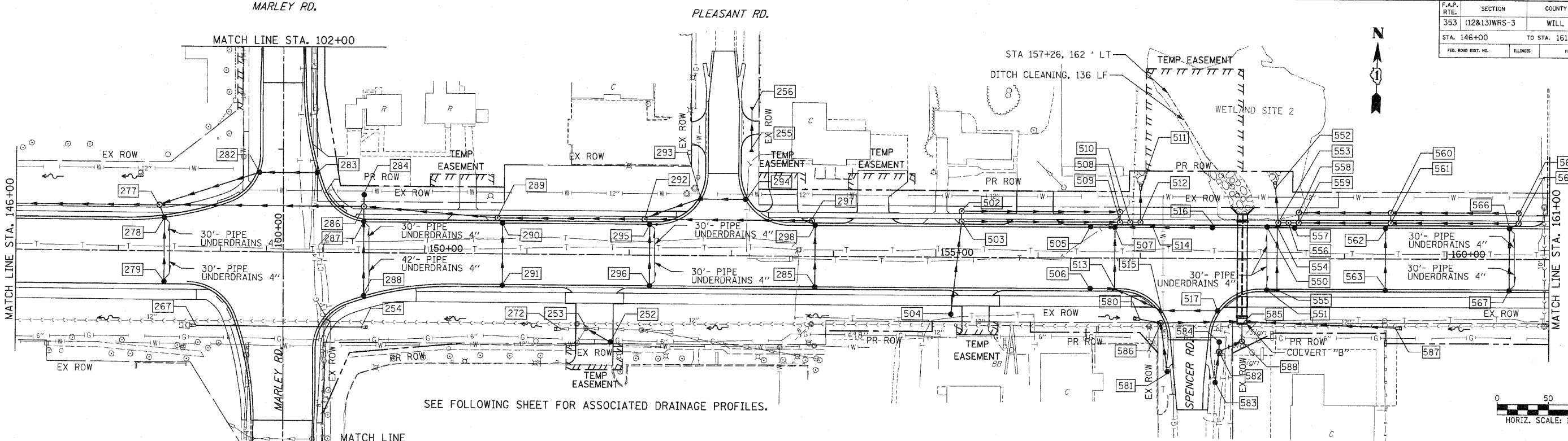
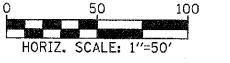


F.A.P. RTE.	SECTION	COUNTY	TOTAL SHEETS	SHEET NO
353	(12&13)WRS-3	WILL	1235	290
STA. 146+00		TO STA. 161+00		
FED. ROAD DIST. NO.	ILLINOIS	FED. AID PROJECT		



SEE FOLLOWING SHEET FOR ASSOCIATED DRAINAGE PROFILES.



PIPE TABLE

U. S.	D. S.	INVERT		SLOPE (FT/FT)	TYPE	STORM SEWER		DIA (INCH)	TRENCH BACKFILL (CU YD)
		U. S.	D. S.			LENGTH (1)	LENGTH (2)		
285	298	686.35	686.09	0.0044	2	60		12	7.9
298	297	686.09	686.05	0.0044	2	8		12	1.4
297	292	686.05	683.66	0.0149	2	161		12	31.2
294	293	684.15	683.96	0.0044	2	0	43	12	5.7
293	292	683.96	683.70	0.0044	2	59		12	10.1
296	295	684.07	683.77	0.0050	2	60		12	7.9
295	292	683.77	683.73	0.0050	2	7		12	1.2
292	289	683.66	681.52	0.0149	2	144		12	27.9
291	290	681.89	681.62	0.0045	2	60		12	7.9
290	289	681.62	681.59	0.0045	2	7		12	1.2
289	286	681.52	679.56	0.0149	2	131		12	44.8
288	287	679.48	679.16	0.0045	2	72		12	11.0
287	286	679.16	679.09	0.0045	2	16		12	4.7
284	286	679.44	679.38	0.0050	1	13		12	0.0
286	277	679.09	676.11	0.0149	2	200		15	79.6
278	277	676.39	676.39	0.0050	2	63		12	8.3
283	282	676.38	676.32	0.0050	2	13		12	3.4
282	277	676.90	676.90	0.0050	2	56		12	8.6
252	253	684.07	676.38	0.0100	2	71	32	12	4.9
504	503	687.45	686.99	0.0050	1	27		12	8.2
503	509	686.94	686.27	0.0043	2	155		12	11.4
517	515	686.07	685.82	0.0045	1	31	24	12	30.1
515	513	685.82	685.59	0.0045	1	21	24	12	7.2
506	513	686.70	686.59	0.0045	2	24		12	18.4
513	507	685.59	685.32	0.0045	2	60		12	3.2
505	507	686.45	686.33	0.0050	2	24		12	14.2
516	514	686.10	685.80	0.0050	2	29	32	12	10.6
514	507	685.80	685.61	0.0050	2	37		12	8.0
507	509	685.32	685.29	0.0050	2	7		12	2.0
509	510	685.28	685.24	0.0043	2	10		15	3.1
510	512	685.24	685.19	0.0043	2	10		18	3.1
512	511	685.19	685.04	0.0043	1	8	27	18	2.6
580	586	687.40	686.99	0.0250	1	17		15	0.0
581	586	685.48	685.24	0.0050	1	0	49	18	0.0
586	585	685.24	684.84	0.0050	2	80		18	9.7
583	582	685.21	685.06	0.0050	1	31		24	0.0
584	582	685.11	685.06	0.0050	1	10		24	0.0
582	588	685.06	684.94	0.0050	1	25		30	0.0
588	585	684.94	684.84	0.0055	1	17		30	0.0
587	585	686.40	684.84	0.0104	1	150		15	0.0
567	566	687.31	687.07	0.0040	2	60		12	7.9
566	565	687.07	687.03	0.0040	2	10		12	1.8
565	561	687.03	686.49	0.0043	2	125		12	21.6
563	562	686.76	686.52	0.0040	1	60		12	7.9
562	561	686.52	686.49	0.0040	2	7		12	0.9
561	559	686.49	686.10	0.0043	2	90		12	55.9
551	555	686.48	686.44	0.0040	1	10		12	1.3
555	554	686.44	686.20	0.0040	1	60		12	7.9
550	554	686.24	686.20	0.0040	1	10		12	1.3
554	557	686.20	686.13	0.0043	1	17		12	2.2
557	559	686.13	686.10	0.0043	2	6		12	0.8
559	556	685.12	685.08	0.0043	2	10		15	2.8
556	553	685.08	685.03	0.0043	2	10		15	2.8
553	552	685.03	684.89	0.0043	1	10	24	18	2.8
508	509	685.29	685.28	0.0013	1	10		33	6.0
502	508	685.49	685.29	0.0013	1	155		33	92.3
558	559	685.14	685.13	0.0011	1	10		33	6.4
560	558	685.24	685.14	0.0011	1	90		33	57.8
564	560	685.38	685.24	0.0011	1	125		33	92.1
503	502	687.94	687.84	0.0100	1	10		12	2.6
565	564	688.03	687.93	0.0100	1	10		12	2.6
561	560	687.49	687.39	0.0100	1	10		12	2.4

STRUCTURE TABLE

STR. #	STATION	OFFSET	TYPE	FRAME	RIM ELEV	INVERT ELEVATION				UNDER DRAIN CONNECT	STR TOP SLAB
						NORTH	EAST	SOUTH	WEST		
252	151+82.00	85.6	CB C	1 OL	688.50	684.07		683.80			
253	151+58.20	72.3	EX CB	1 CL	688.30						
254	149+38.24	72.0	FES 15								
255	153+19.00	112.0	FES 15								
256	153+19.00	138.0	FES 15								
267	147+76.54	72.0	FES 27								
272	151+33.00	-73.2	FES 24	0							
277	147+40.00	-45.0	MH A4	1 CL	681.08	676.38	676.11	676.32	676.11		
278	147+45.00	-32.6	CB A4	24	680.85	676.39				YES	
279	147+45.00	30.0	CB C	24	680.90	676.70				YES	
280	144+29.00	-71.0	FES 18								
281	145+01.00	-71.0	FES 18								
282	148+37.70	-77.1	IN B	24	681.48		676.90	676.38			TAPERED
283	148+94.13	-77.5	CB C	24	681.60				676.90		
284	149+40.00	-58.4	CB C	8	681.40				679.44		
285	153+82.00	30.0	CB C	24	690.52	686.35					
286	149+40.00	-45.7	MH A4	1 CL	684.18		679.56	679.09	679.09		FLAT
287	149+40.00	-30.0	CB A4	24	683.92	679.16			679.16	YES	FLAT
288	149+40.35	42.2	IN B	24	683.64	679.48				YES	TAPERED
289	150+71.00	-35.0	MH A4	1 CL	686.42		681.52	681.59	681.52		FLAT
290	150+76.00	-30.0	CB A4	24	686.03	681.62			681.62		FLAT
291	150+76.00	30.0	CB C	24	686.05	681.89					
292	152+15.00	-35.0	MH A4	1 CL	688.66	683.70	683.66	683.73	683.66		FLAT
293	152+70.10	-55.0	IN B	24	688.20		683.96	683.96			FLAT
294	153+13.50	-55.0	CB C	24	688.33				684.15		
295	152+20.00	-30.0	CB A4	24	688.28	683.77				YES	FLAT
296	152+20.00	30.0	CB C	24	688.28	684.07				YES	
297	153+76.00	-35.0	MH A4	1 CL	690.92	686.05					FLAT
298	153+82.00	-30.0	CB A4	24	690.52	686.09					FLAT
502	155+25.00	-45.0	MH A5	1 CL	691.42	685.49	685.49	687.84			FLAT
503	155+25.00	-35.0	MH A4	1 CL	691.67	687.94	686.94	686.99			FLAT
504	155+15.00	56.0	CB C	8	689.00	687.45					
505	156+51.00	-30.0	CB C	24	690.94		686.45				
506	156+51.00	30.0	CB C	24	690.94		686.70				
507	156+75.00	-30.0	CB A4	24	690.82	685.32	685.61	685.32	686.33		TAPERED
508	156+80.00	-45.0	MH A5	1 OL	689.85		685.29	685.29			FLAT
509	156+80.00	-35.0	MH A5	1 CL	691.20	685.28	685.28	686.27			FLAT
510	156+90.00	-35.0	RMH	2-1 CL	691.16	685.24		685.24			FLAT
511	157+00.00	-70.0	FES 18								
512	157+00.00	-35.0	MH A4	1 CL	691.11	685.19		685.19			TAPERED
513	156+75.00	30.0	IN B	24	690.75	685.59		685.59	0.00		TAPERED
514	157+12.00	-30.0	IN B	24	690.65		685.80		685.80		TAPERED
515	157+21.10	51.6	IN B	24	689.78	685.82		685.82			TAPERED
516	157+73.00	-30.0	CB C	24	690.38				686.10		TAPERED
517	157+76.00	51.6	CB C	24	689.75				686.07		
550	158+24.00	-30.0	CB C	24	690.27		686.24			YES	
551	158+24.00	30.0	CB C	24	690.27		686.48			YES	
552	158+32.00	-68.9	FES 18	0		684.89					
553	158+35.00	-35.0	MH A4	1 CL	690.71	685.03					FLAT
554	158+34.01	-30.0	IN B	24	690.26	686.20	686.20	686.20			TAPERED
555	158+34.01	30.0	IN B	24	690.26	686.44	686.44	686.44			TAPERED
556	158+45.00	-35.0	RMH	2-1 CL	690.72	685.08		685.08			FLAT
557	158+51.00	-30.0	CB A4	24	690.27	686.13		686.13			FLAT
558	158+55.00	-45.0	MH A5	1 OL	690.53	685.14	685.14	685.14			FLAT
559	158+55.00	-35.0	MH A5	1 CL	690.73	685.13	686.10	686.13	685.12		FLAT
560	159+45.00	-45.0	MH A5	1 CL	690.90	685.24	687.39	685.24			FLAT

STRUCTURE TABLE

STR. #	STATION	OFFSET	TYPE	FRAME	RIM ELEV	INVERT ELEVATION				UNDER DRAIN CONNECT	STR TOP SLAB
						NORTH	EAST	SOUTH	WEST		
561	159+45.00	-35.0	MH A4	1 CL	690.61	687.49	686.49	686.49	686.49		FLAT
562	159+40.00	-30.0	CB A4	24	690.61	686.52		686.52			FLAT
563	159+40.00	30.0	CB C	24	691.72	686.76					
564	160+70.00	-45.0	MH A5	1 CL	691.92		685.38	687			