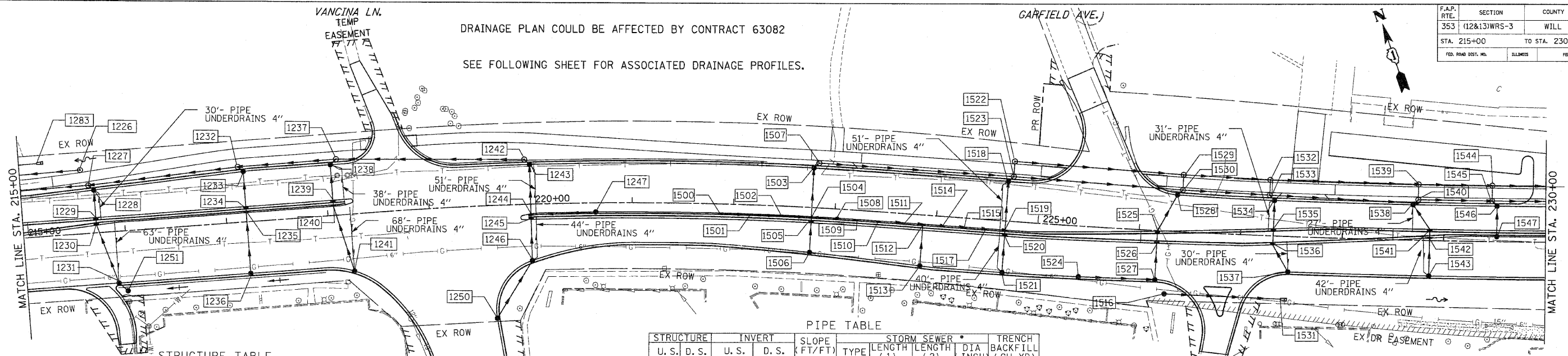


F.A.P. RTE.	SECTION	COUNTY	TOTAL SHEETS	SHEET NO.
353	(12&13)WRS-3	WILL	1235	300
STA. 215+00		TO STA. 230+00		
FED. ROAD DIST. NO.	ILLINOIS	FED. AID PROJECT		

DRAINAGE PLAN COULD BE AFFECTED BY CONTRACT 63082

SEE FOLLOWING SHEET FOR ASSOCIATED DRAINAGE PROFILES.



STRUCTURE TABLE

STR. #	STRUCTURE				RIM ELEV	INVERT ELEVATION				UNDER DRAIN CONNECT	STR. SLAB
	STATION	OFFSET	TYPE	FRAME		NORTH	EAST	SOUTH	WEST		
1226	215+60.00	-62.9	MH A5	1 CL	727.39			717.74			FLAT
1227	215+67.00	-47.2	MH A5	1 CL	727.83			721.92			FLAT
1228	215+72.00	-42.2	CB A4	24	727.47	722.41	722.38	721.92		YES	FLAT
1229	215+72.00	-15.0	IN B	24	728.01	722.53	722.53				TAPERED
1230	215+72.00	-7.5	IN B	24	727.58	722.56	722.56				TAPERED
1231	215+90.00	50.9	IN B	24	727.62	722.83		719.01	YES		TAPERED
1232	217+15.00	-54.6	MH A4	1 CL	730.87		725.66	725.38			FLAT
1233	217+20.00	-49.6	CB A4	24	730.54	725.41	725.41				FLAT
1234	217+20.00	-15.0	IN B	24	730.73	725.56	725.56				TAPERED
1235	217+20.00	-9.0	IN B	24	730.25	725.59	725.59				TAPERED
1236	217+20.00	50.9	CB C	24	730.01	725.85					
1237	218+12.00	-55.0	MH A4	1 CL	733.10		727.35	727.11	727.11		TAPERED
1238	218+06.00	-50.0	CB A4	24	732.63	727.14	727.14		YES		TAPERED
1239	218+06.00	-15.0	IN B	24	732.32	727.30	727.30				TAPERED
1240	218+06.00	-9.0	IN B	24	731.98	727.33	727.33				TAPERED
1241	218+22.00	56.1	CB C	24	731.54	727.62			YES		
1242	219+95.00	-44.0	MH A4	1 CL	736.18		728.16	728.16			TAPERED
1243	220+00.00	-39.0	CB A4	24	735.76	728.19	728.19		YES		TAPERED
1244	220+00.00	9.0	IN B	11V	734.66	728.40	730.16	728.40			TAPERED
1245	220+00.00	15.0	IN B	24	735.15	728.43	728.43				TAPERED
1246	220+00.00	55.7	CB C	24	734.03	728.61			YES		TAPERED
1247	220+64.00	9.0	CB C	11V	735.10			730.80			
1250	219+62.60	111.2	CB C	24	732.56	728.90					
1251	215+99.00	59.0	CB C	8	727.15	717.40					
1283	215+17.00	-72.0	FES 15								
1500	221+87.00	9.0	CB C	11V	735.20		730.90				TAPERED
1501	222+17.00	9.0	IN B	11V	735.08		730.75				TAPERED
1502	222+47.00	9.0	IN B	11V	734.96		730.60				TAPERED
1503	222+78.00	-39.0	CB A4	24	729.99	729.99	729.99				TAPERED
1504	222+77.00	9.0	IN B	11V	734.84	730.23	730.23	730.45			TAPERED
1505	222+78.00	15.0	IN B	24	735.32	730.27	730.27				TAPERED
1506	222+78.00	44.0	CB C	24	736.07	730.41					TAPERED
1507	222+83.00	-44.0	MH A4	1 CL	736.37		729.96				
1508	223+01.00	9.0	IN B	11V	734.75		730.35				TAPERED
1509	223+21.00	9.0	CB C	11V	734.67		730.45				TAPERED
1510	223+43.00	9.0	CB C	11V	734.58		730.44				TAPERED
1511	223+65.00	9.0	IN B	11V	734.49		730.33				TAPERED
1512	223+87.00	9.0	IN B	11V	734.40		730.24	729.82			TAPERED
1513	223+87.00	50.0	CB C	24	734.17	730.02					TAPERED
1514	224+06.00	9.0	IN B	11V	734.33		730.15	730.15			TAPERED
1515	224+28.00	9.0	IN B	11V	734.24		730.04	730.04			TAPERED
1516	226+27.00	62.0	CB C	8	733.55		730.80				FLAT
1517	224+48.00	9.0	IN B	11V	734.16		729.94				TAPERED
1518	224+68.00	-39.0	CB A4	24	734.08	729.25	729.25		YES		TAPERED
1519	224+68.00	9.0	IN B	11V	734.08	729.49	729.49	729.84			TAPERED
1520	224+68.00	15.0	IN B	24	734.56	729.52	729.52				FLAT
1521	224+68.00	51.0	CB C	24	733.84	729.70			YES		FLAT
1522	224+73.00	-59.0	MH A5	1 CL	734.55		724.10	730.24			
1523	224+73.00	-44.0	MH A4	1 CL	734.85	730.39	729.21	729.14			TAPERED
1524	225+43.00	50.0	CB C	24	733.54	729.40					TAPERED
1525	226+18.00	0.5	IN B	24	733.70	728.78	728.78				TAPERED
1526	226+18.00	12.5	IN B	24	733.96	728.84	728.84				FLAT
1527	226+18.00	48.5	IN B	24	733.24	729.02		729.02			FLAT
1528	226+36.00	36.0	CB A4	24	733.45	728.59	728.59				FLAT
1529	226+41.00	-56.0	MH A5	1 CL	733.54		723.93	729.70			
1530	226+41.00	-41.0	MH A4	1 CL	733.84	729.85	728.60	728.20			FLAT
1531	227+42.00	62.0	FES 15								FLAT
1532	227+42.00	-55.0	MH A5	1 CL	733.19		723.85	729.43			FLAT
1533	227+42.00	-40.0	MH A4	1 CL	733.49	729.58	728.33	728.33			TAPERED
1534	227+52.00	-35.0	CB A4	24	733.02	728.24	728.24		YES		TAPERED
1535	227+32.00	9.0	IN B	24	733.42	728.52		728.52			
1536	227+32.00	8.9	IN B	24	733.47	728.60	728.60				FLAT
1537	227+48.00	8.9	CB C	24	732.96	728.75			YES		FLAT
1538	228+69.00	-35.0	CB A4	24	732.47	727.50			YES		FLAT
1539	228+74.00	-55.0	MH A5	1 CL	732.60		723.70	728.96			TAPERED
1540	228+74.00	-40.0	IN B	24	732.89	727.86	727.86	727.86			TAPERED
1541	228+86.00	-11.0	IN B	24	732.89	727.79	727.79				
1542	228+86.00	-1.3	IN B	24	732.62	727.89	727.89				
1543	228+86.00	35.0	CB C	24	732.41	728.25			YES		FLAT
1544	229+47.00	-55.0	MH A5	1 CL	732.31		723.63	728.73			FLAT
1545	229+47.00	-40.0	MH A4	1 CL	732.61	728.88	727.63	727.63			FLAT
1546	229+52.00	-35.0	CB A4	24	732.14	727.84	727.84				
1547	229+52.00	-5.0	CB C	11V	732.30	728.14					

PIPE TABLE

STRUCTURE	INVERT		SLOPE (FT/FT)	TYPE	STORM SEWER		DIA INCH	TRENCH BACKFILL (CU YD)
	U. S.	D. S.			LENGTH (1)	LENGTH (2)		
1250	1246	728.90	0.0044	2	67	12	10.2	
1246	1245	728.61	0.0044	2	41	12	13.0	
1245	1244	728.43	0.0044	2	6	12	2.2	
1247	1244	730.80	0.01	2	64	12	9.7	
1244	1243	728.40	0.0044	2	48	12	30.3	
1243	1242	728.19	0.0044	2	7	12	5.6	
1242	1237	728.16	0.0044	2	183	12	115.9	
1241	1240	727.62	0.0044	2	67	12	8.8	
1240	1239	727.33	0.0044	1	6	12	1.2	
1239	1238	727.30	0.0044	2	35	12	8.3	
1238	1237	727.14	0.0044	2	8	12	2.2	
1237	1232	727.11	0.015	2	97	15	27.4	
1236	1235	725.85	0.0044	2	60	12	9.1	
1235	1234	725.59	0.0044	2	6	12	1.2	
1234	1233	725.56	0.0044	2	35	12	7.4	
1233	1232	725.41	0.0044	2	7	12	1.7	
1232	1227	724.14	0.015	2	148	15	52.2	
1231	1231	722.95	0.01	2	12	12	1.8	
1231	1230	722.83	0.0044	2	61	12	11.9	
1230	1229	722.56	0.0044	2	8	12	1.8	
1229	1228	722.53	0.0044	2	7	12	1.7	
1228	1227	722.41	0.0044	2	27	12	18.9	
1226	1219	717.74	0.0015	2	243	27	268.1	
1500	1501	730.90	0.0050	2	30	12	4.0	
1501	1502	730.75	0.0050	2	30	12	4.0	
1502	1504	730.60	0.0050	2	30	12	4.6	
1506	1505	730.41	0.0050	2	29	12	4.5	
1505	1504	730.27	0.0050	2	6	12	1.2	
1509	1508	730.45	0.0050	2	20	12	2.6	
1508	1504	730.35	0.0050	2	24	12	3.6	
1504	1503	730.23	0.0050	2	48	12	11.3	
1503	1507	729.99	0.0050	2	7	12	2.3	
1507	1523	729.96	0.0043	2	190	12	60.8	
1510	1511	730.44	0.0050	1	22	12	2.9	
1511	1512	730.33	0.0050	2	22	12	2.9	
1513	1512	730.02	0.0050	2	41	12	6.2	
1512	1514	730.24	0.0050	2	19	12	2.5	
1514	1515	730.15	0.0050	2	22	12	2.9	
1515	1517	730.04	0.0050	2	20	12	2.6	
1517	1519	729.94	0.0050	2	20	12	2.6	
1521	1520	729.70	0.0050	2	36	12	5.5	
1520	1519	729.52	0.0050	2	6	12	1.2	
1519	1518	729.49	0.0050	2	48	12	8.3	
1518	1523	729.25	0.0050	2	7	12	1.7	
1523	1530	729.14	0.0032	2	168	15	43.5	
1524	1527	729.40	0.0050	2	75	12	9.9	
1527	1526	729.02	0.0050	2	36	12	6.2	
1526	1525	728.84	0.0050	2	12	12	0.0	
1525	1528	728.78	0.0050	2	40	12	7.7	
1528	1530	728.59	0.0050	2	77	12	53.7	
1530	1533	728.60	0.0032	2	86	15	18.3	
1537	1536	728.75	0.0050	2	31	12	4.7	
1536	1535	728.60	0.0050	2	16	12	0.0	
1535	1534	728.52	0.0100	2	28	12	5.4	
1534	1533	728.24	0.0100	2	7	12	1.5	