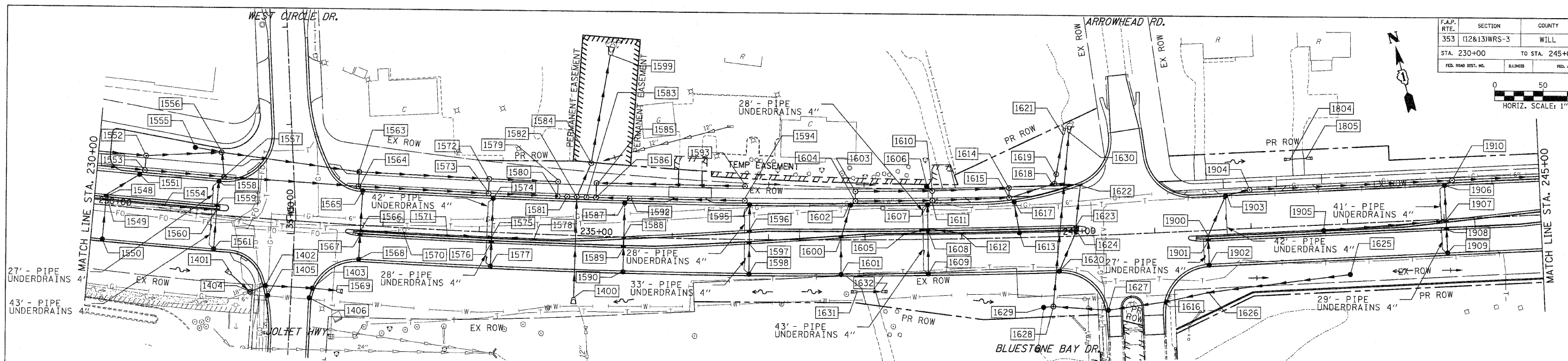
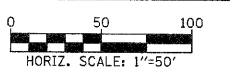


F.A.P. RTE.	SECTION	COUNTY	TOTAL SHEETS	SHEET NO.
353	(12&13)WRS-3	WILL	1235	302
STA. 230+00		TO STA. 245+00		
FED. ROAD DIST. NO.	ILLINOIS	FED. AID PROJECT		



STRUCTURE TABLE

STR	STATION	OFF.	TYPE	FRAME	RIM ELEV.	INVERT ELEVATION			UND. DR. CON.	STR. TOP SLAB
						NORTH	EAST	WEST		
1548	230+12.00	-11.0	IN B	24	732.38	727.44	727.44		-	TAPERED
1549	230+12.00	-5.0	IN B	11V	732.06	727.48	727.48		-	TAPERED
1550	230+12.00	35.0	CB C	24	731.90	727.74	727.74		-	FLAT
1551	230+44.00	-35.0	CB A4	24	731.77	727.20	727.20		-	FLAT
1552	230+49.00	-55.0	MH A5	1 CL	732.52	728.22	723.52		-	FLAT
1553	230+49.00	-40.0	MH A4	1 CL	732.20	728.37	727.12		-	FLAT
1554	230+72.00	-5.0	CB C	11V	731.82	727.66	727.66		-	FLAT
1555	231+00.00	-67.0	CB C	8	728.75	726.80	726.80		-	FLAT
1556	231+27.00	-65.0	MH A5	1 CL	728.80	726.68	723.46		-	FLAT
1557	231+32.00	-40.0	MH A4	1 CL	731.87	728.10	726.85		-	FLAT
1558	231+27.00	-35.0	CB A4	24	731.45	726.91	726.91		-	FLAT
1559	231+27.00	-11.0	IN B	24	731.92	727.03	727.03		-	TAPERED
1560	231+27.00	-5.0	IN B	11V	731.60	727.06	727.06		-	TAPERED
1561	231+27.00	35.0	CB C	24	731.44	727.26	727.26		-	FLAT
1563	232+72.00	-55.0	MH A5	1 CL	731.01	723.34	727.50		-	FLAT
1564	232+72.00	-40.0	MH A4	1 CL	731.31	727.65	726.40		-	FLAT
1565	232+77.00	-35.0	CB A4	24	730.84	726.44	726.44		-	FLAT
1566	232+77.00	5.0	IN B	24	731.25	726.61	726.61		-	TAPERED
1567	232+77.00	11.0	IN B	24	731.32	726.61	726.61		-	TAPERED
1568	232+77.00	35.0	IN B	24	730.84	726.72	726.72		-	TAPERED
1569	232+56.00	69.0	FES 24	-	-	-	725.02		-	-
1570	233+22.00	5.0	CB C	24	730.95	726.48	726.81		-	-
1571	233+67.00	5.0	CB C	24	730.64	726.48	726.81		-	-
1572	234+08.00	-55.0	MH A5	1 CL	730.47	723.24	727.07		-	FLAT
1573	234+08.00	-40.0	MH A4	1 CL	730.77	727.22	725.97		-	FLAT
1574	234+13.00	-35.0	CB A4	24	730.30	726.00	726.00		-	FLAT
1575	234+13.00	5.0	IN B	24	730.46	726.18	726.18		-	TAPERED
1576	234+13.00	11.0	IN B	24	730.78	726.03	726.03		-	TAPERED
1577	234+13.00	35.0	CB C	24	730.30	726.14	726.14		-	TAPERED
1578	234+57.00	5.0	CB C	24	730.28	726.37	726.37		-	FLAT
1579	234+80.00	-55.0	MH A5	1 CL	730.18	723.18	723.18		-	FLAT
1580	234+80.00	-40.0	MH A4	1 CL	730.44	723.17	723.14		-	FLAT
1581	234+90.00	-40.0	RMH	2-1 CL	730.48	723.17	723.14		-	FLAT
1582	235+00.00	-40.0	MH A5	1 CL	730.44	718.58	723.10		-	FLAT
1583	235+10.00	-40.0	RMH	2-1 CL	730.36	723.20	723.20		-	FLAT
1584	235+14.00	-75.4	MH A5	8	724.80	712.45	718.28		-	FLAT
1585	235+20.00	-55.0	MH A4	1 CL	730.02	723.34	723.34		-	TAPERED
1586	235+20.00	-40.0	MH A4	1 CL	730.32	723.30	723.30		-	TAPERED
1587	235+50.00	-35.0	CB A4	24	729.75	724.89	724.89		-	TAPERED
1588	235+50.00	-0.5	IN B	24	730.01	725.24	725.24		-	TAPERED
1589	235+50.00	11.0	IN B	24	730.23	725.35	725.35		-	TAPERED
1590	235+50.00	35.0	CB C	24	729.75	725.59	725.59		-	TAPERED
1592	235+55.00	-40.0	MH A4	1 CL	730.18	724.88	723.63		-	FLAT
1593	236+75.00	-55.0	MH A4	1 CL	729.40	723.73	723.73		-	FLAT
1594	236+75.00	-40.0	MH A4	1 CL	729.70	725.72	724.72		-	FLAT
1595	236+80.00	-35.0	CB A4	24	729.23	724.76	724.76		-	FLAT
1596	236+80.00	-9.1	IN B	24	729.67	724.87	724.87		-	TAPERED
1597	236+80.00	4.5	IN B	24	729.58	724.93	724.93		-	TAPERED
1598	236+80.00	35.0	CB C	24	729.23	725.07	725.07		-	TAPERED
1599	235+30.70	-187.5	FES 42	-	-	-	712.25		-	-
1600	235+00.00	64.2	FES 30	-	-	-	723.20		-	-
1601	231+46.80	59.7	FES 24	-	-	-	727.76		-	-
1602	231+83.00	68.8	CB A5	-	730.45	725.24	726.19		-	-
1603	232+31.00	67.8	CB A5	-	730.55	725.02	726.25		-	-
1604	231+68.00	76.3	MH A5	1 CL	732.50	721.12	726.00		-	FLAT
1605	231+86.10	78.8	CB C	24	730.45	726.29	726.29		-	-
1606	232+29.00	78.1	CB C	24	730.55	726.35	726.35		-	-
1607	237+75.00	-1.9	IN B	24	729.06	724.53	724.53		-	-
1608	237+75.00	35.0	CB C	24	728.84	724.70	724.70		-	-
1609	237+85.00	-35.0	CB A4	24	728.80	724.38	724.38		-	FLAT
1610	237+90.00	-50.0	MH A5	1 CL	729.03	723.89	725.25		-	FLAT
1611	237+90.00	-40.0	MH A4	1 CL	729.23	725.35	724.35		-	FLAT
1612	238+40.00	-5.0	CB C	11V	728.68	724.52	724.52		-	-
1607	238+60.00	-54.5	CB A4	8	727.86	723.70	723.70		-	FLAT
1608	238+65.00	-35.0	CB A4	24	728.37	723.97	723.97		-	FLAT
1609	238+65.00	-11.0	IN B	24	728.85	724.08	724.08		-	FLAT
1610	238+65.00	35.0	CB C	24	728.37	724.28	724.28		-	FLAT
1611	238+70.00	-50.0	MH A5	1 CL	728.59	723.63	723.73		-	FLAT
1611	238+70.00	-40.0	MH A4	1 CL	728.79	724.94	724.94		-	FLAT

STRUCTURE TABLE

STR	STATION	OFF.	TYPE	FRAME	RIM ELEV.	INVERT ELEVATION			UND. DR. CON.	STR. TOP SLAB
						NORTH	EAST	SOUTH		
1612	239+00.00	-5.0	CB C	11V	728.31	724.15	724.15		-	-
1614	239+50.00	-51.5	MH A5	1 CL	727.96	723.57	723.57		-	FLAT
1615	239+50.00	-41.5	MH A5	1 CL	728.16	723.55	723.55		-	FLAT
1616	241+08.00	-71.7	IN B	24	724.82	718.53	718.53		-	-
1617	239+55.00	-37.0	CB A4	24	727.70	723.38	723.38		-	FLAT
1618	239+97.50	-54.9	MH A5	1 CL	727.40	721.24	721.99		-	FLAT
1619	239+99.60	-64.8	RMH	2-1 OL	727.60	711.17	711.17		-	-
1620	240+00.00	35.0	CB C	24	727.39	723.18	723.18		-	-
1621	240+08.40	-106.0	FES 15	-	-	-	710.90		-	-
1622	240+24.40	-52.9	IN B	24	726.87	722.26	722.26		-	-
1623	240+18.47	-11.0	IN B	24	727.72	722.68	722.68		-	-
1624	240+18.47	-5.0	IN B	11V	727.69	722.74	722.74		-	-
1625	243+00.00	52.0	CB C	8	722.80	719.50	719.50		-	-
1626	241+53.00	64.0	IN B	8	724.00	718.76	718.76		-	-
1627	240+49.00	77.8	CB A4	24	725.28	718.24	718.24		-	TAPERED
1628	239+93.00	72.0	MH A5	1 CL	724.30	712.00	717.67		-	FLAT
1629	239+83.00	72.7	CB A4	8	724.00	720.50	720.67		-	FLAT
1630	240+14.00	-107.8	FES 24	-	-	-	710.91		-	-
1631	237+91.50	53.6	FES 15	-	-	-	-		-	-
1632	238+16.30	53.6	FES 15	-	-	-	-		-	-
1804	242+43.00	-69.9	FES 15	-	-	-	-		-	-
1805	242+60.00	-69.9	FES 15	-	-	-	-		-	-
1900	241+55.00	5.0	IN B	11V	713.50	721.40	721.40		-	TAPERED
1901	241+55.00	11.0	IN B	24	713.50	721.46	721.46		-	TAPERED
1902	241+55.00	35.0	CB C	24	725.86	721.70	721.70		-	YES
1903	241+75.00	-35.0	CB A4	24	725.64	720.95	720.95		-	FLAT
1904	242+00.00	-40.0	MH A4	1 CL	725.79	720.70	720.70		-	FLAT
1905	242+75.00	5.0	CB C	11V	724.55	719.89	719.89		-	YES
1906	244+02.00	-35.0	CB A4	24	722.54	717.31	717.31		-	FLAT
1907	244+02.00	1.0	IN B	24	722.78	717.67	717.67		-	TAPERED
1908	244+02.00	11.0	IN B	24	723.02	717.77	717.77		-	TAPERED
1909	244+02.00	35.0	CB C	24	722.54	718.01	718.01		-	YES
1910	244+10.00	-40.0	MH A4	1 CL	722.87	716.94	717.22		-	FLAT

A - INLET TO BE ADJUSTED (SPECIAL)
CATCH BASIN TO BE ADJUSTED (SPECIAL)

PIPE TABLE

STR	U. S.	D. S.	INVERT	SLOPE (FT/FT)	TY	STORM SEWER		TREN. BACK. (CU YD)
						LEN. (1)	DIA (2)	
1550	1549	727.74	727.48	0.0065	2	40	12	6.1
1549	1548	727.48	727.44	0.0060	2	6	12	1.0
1548	1551	727.44	727.20	0.0060	2	40	12	6.9
1551	1553	727.20	727.16	0.0060	2	7	12	1.4
1553	1557	727.16	726.85	0.0032	2	83	15	53.3
1557	1560	726.85	727.06	0.0050	2	40	12	5.3
1560	1560	727.66	727.11	0.0100	2	55	12	7.3
1560	1559	727.06	727.03	0.0050	2	6	12	1.0
1559	1558	727.03	726.91	0.0050	2	24	12	4.2
1558	1557	726.91	726.87	0.0050	2	7	12	1.2
1555	1556	726.87	726.68	0.0044	1	27	12	0.0
1557	1564	726.85	726.61	0.0032	2	140	15	26.6
1564	1567	726.61	726.61	0.0044	2	24	12	3.6
1567								