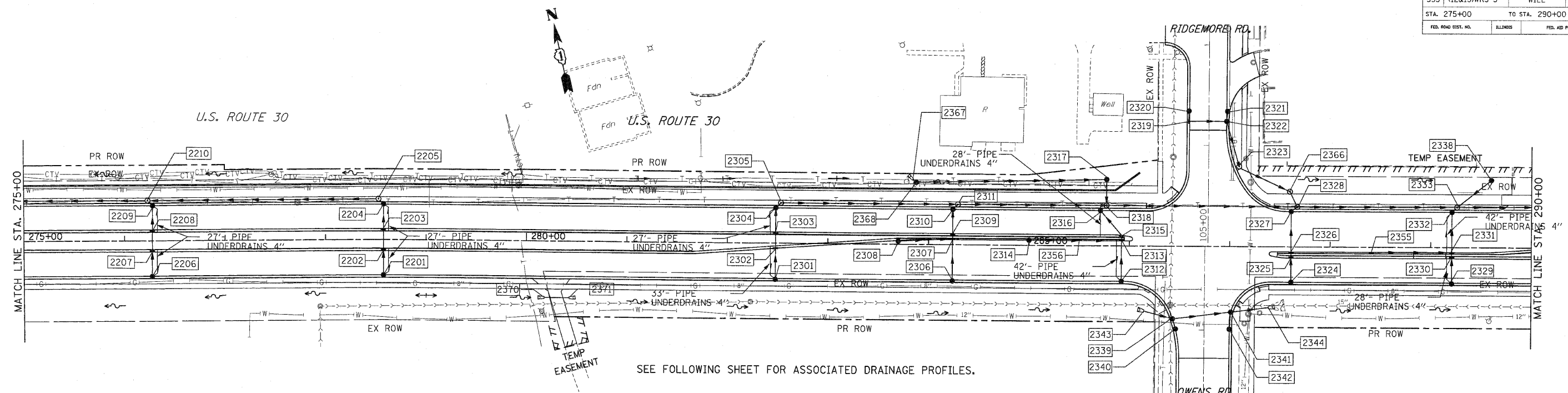
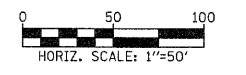


F.A.P. RTE.	SECTION	COUNTY	TOTAL SHEETS	SHEET NO.
353	(12&13)WRS-3	WILL	1235	308
STA. 275+00		TO STA. 290+00		
FED. ROAD DIST. NO.		ILLINOIS	FED. AID PROJECT	



SEE FOLLOWING SHEET FOR ASSOCIATED DRAINAGE PROFILES.



PIPE TABLE

STRUCTURE		INVERT		SLOPE (FT/FT)	TYPE	STORM SEWER*		DIA INCH	TRENCH BACKFILL (CU YD)	
U. S.	D. S.	U. S.	D. S.			LENGTH (1)	LENGTH (2)			
2201	2202	714.14	713.78	0.0150	2	24	12	4.7		
2202	2203	713.78	713.45	0.0150	2	22	12	0.0		
2203	2204	713.45	713.09	0.0150	2	24	12	6.2		
2204	2205	713.09	712.98	0.0150	2	7	12	2.3		
2205	2210	712.98	708.38	0.0200	2	230	12	83.3		
2206	2207	709.92	709.80	0.0050	2	24	12	3.6		
2207	2208	709.80	709.69	0.0050	2	22	12	0.0		
2208	2209	709.69	709.57	0.0050	2	24	12	4.2		
2209	2210	709.57	709.53	0.0050	2	7	12	1.2		
2301	2302	714.06	713.91	0.0050	2	30	12	4.6		
2302	2303	713.91	713.83	0.0050	2	16	12	0.0		
2303	2304	713.83	713.71	0.0050	2	24	12	4.2		
2304	2305	713.71	713.61	0.0050	2	7	12	1.2		
2305	2311	713.61	712.79	0.0050	2	176	15	29.4		
2306	2307	712.79	712.59	0.0050	2	40	12	5.3		
2307	2308	712.59	712.95	0.0050	2	54	12	7.1		
2308	2309	712.95	712.56	0.0050	2	6	12	1.2		
2309	2310	712.56	712.44	0.0050	2	24	12	4.2		
2310	2311	712.44	712.40	0.0050	2	7	12	1.2		
2311	2318	712.40	711.37	0.0070	2	148	18	95.8		
2312	2313	711.52	711.51	0.0050	2	40	12	6.1		
2314	2356	712.28	711.93	0.0070	2	50	12	6.6		
2356	2313	711.93	711.72	0.0050	2	42	12	6.4		
2313	2315	711.51	711.47	0.0070	2	6	12	1.0		
2315	2316	711.47	711.25	0.0070	2	32	12	8.9		
2367	2368	712.20	712.10	0.0250	1	4	15	0.0		
2368	2317	711.00	710.02	0.0050	1	197	15	0.0		
2316	2318	711.25	711.21	0.0050	2	8	12	1.5		
2317	2318	709.98	709.88	0.0040	1	26	15	0.0		
2318	2328	709.88	708.55	0.0070	2	158	21	68.0		
2320	2319	709.60	709.55	0.0050	2	10	12	2.6		
2319	2322	709.55	709.36	0.0050	2	37	12	10.3		
2321	2322	709.60	709.55	0.0050	2	10	12	2.8		
2322	2323	709.36	709.14	0.0050	2	45	12	28.5		
2323	2366	709.14	708.85	0.0050	2	25	12	0.0		
2366	2328	708.85	708.77	0.0050	2	16	12	13.0		
2324	2325	710.36	710.29	0.0050	2	14	12	2.1		
2325	2326	710.29	710.26	0.0050	2	6	12	1.0		
2326	2327	710.26	710.06	0.0050	2	40	12	6.1		
2327	2328	710.06	710.02	0.0050	2	8	12	1.4		
2328	2333	708.55	707.43	0.0070	2	159	24	56.1		
2329	2330	709.48	709.36	0.0050	1	24	12	3.2		
2330	2331	709.36	709.33	0.0050	2	6	12	0.8		
2355	2331	710.08	709.68	0.0050	1	80	12	10.6		
2331	2332	709.33	709.13	0.0050	2	40	12	5.3		
2332	2333	709.13	709.09	0.0050	2	7	12	1.1		
2333	2334	707.43	706.55	0.0070	2	126	24	127.1		
2334	2335	707.87	707.68	0.0045	1	43	12	0.0		
2343	2339	711.11	710.51	0.0200	1	30	24	0.0		
2339	2341	710.10	710.00	0.0100	2	10	12	1.6		
2342	2341	710.15	710.08	0.0040	2	58	24	11.9		
2341	2344	708.97	708.82	0.0040	2	17	12	2.6		
2341	2344	708.97	708.82	0.0040	2	6	32	24	0.0	

* TOTAL LENGTH FROM STRUCTURE TO STRUCTURE = STORM SEWER LENGTH (1) + STORM SEWER (WATER MAIN REQUIREMENTS) LENGTH (2)

STRUCTURE TABLE

STR. #	STATION	OFFSET	STRUCTURE		RIM ELEV	INVERT ELEVATION				UNDER DRAIN CONNECT	STR TOP SLAB	
			TYPE	FRAME		NORTH	EAST	SOUTH	WEST			
2201	278+58.00	35.0	CB C	24	718.54	714.14				YES	-	
2202	278+58.00	11.0	IN B	24	719.02	713.78		713.78		-	TAPERED	
2203	278+58.00	-11.0	IN B	24	719.02	713.45		713.45		-	TAPERED	
2204	278+58.00	-35.0	CB A4	24	718.54	713.09		713.09		YES	TAPERED	
2205	278+53.00	-40.0	MH A4	1 CL	718.93			712.98	712.98	-	TAPERED	
2206	276+28.00	35.0	CB C	24	714.08	709.92				YES	-	
2207	276+28.00	11.0	IN B	24	714.56	709.80		709.80		-	TAPERED	
2208	276+28.00	-11.0	IN B	24	714.56	709.69		709.69		-	TAPERED	
2209	276+28.00	-35.0	CB A4	24	714.08	709.57		709.57		YES	FLAT	
2210	276+23.00	-40.0	MH A4	1 CL	714.40		708.38		706.88	-	FLAT	
2301	282+48.00	35.0	CB C	24	718.22	714.06				YES	-	
2302	282+48.00	5.0	IN B	24	718.60	713.91				-	TAPERED	
2303	282+48.00	-11.0	IN B	24	718.70	713.83				-	TAPERED	
2304	282+48.00	-35.0	CB A4	24	718.22	713.71				YES	FLAT	
2305	282+53.00	-40.0	MH A4	1 CL	718.63		713.67		713.67	-	FLAT	
2306	284+24.00	35.0	CB C	24	716.95	712.79				-	-	
2307	284+24.00	-5.0	IN B	11V	717.11	712.59				-	TAPERED	
2308	284+24.00	-3.0	CB C	24	717.54		713.22		712.59		TAPERED	
2309	284+24.00	-11.0	IN B	24	717.43	712.56			712.56		TAPERED	
2310	284+24.00	-35.0	CB A4	24	716.95	712.44			712.44		FLAT	
2311	284+29.00	-40.0	MH A4	1 CL	717.37			712.40	712.40		FLAT	
2312	285+92.00	35.0	CB C	24	715.74	711.52				YES	-	
2313	285+92.00	-5.0	IN B	11V	716.12	711.51			711.93	-	TAPERED	
2314	285+00.00	-5.0	CB C	11V	716.56		712.28			-	-	
2315	285+92.00	-11.0	IN B	24	716.22	711.47				-	TAPERED	
2316	285+71.00	-35.0	CB A4	24	715.89	711.25				YES	FLAT	
2317	285+77.00	-65.8	CB A4	8	712.30			709.98	710.02	-	FLAT	
2318	285+77.00	-40.0	MH A5	8	716.30	709.88	709.88		711.21	711.37	-	FLAT
2319	286+59.10	-124.2	IN B	24	713.76	709.55	709.55			-	TAPERED	
2320	286+59.17	-134.2	CB C	24	713.79				709.60		-	-
2321	286+96.12	-134.1	CB C	24	713.83				709.60		-	-
2322	286+96.12	-124.1	CB A4	24	713.80	709.55			709.36		-	FLAT
2323	287+09.00	-80.8	MH A4	1 CL	714.60	709.14			709.14		-	TAPERED
2324	287+61.00	25.0	CB C	24	714.52	710.36				-	-	-
2325	287+61.00	11.0	IN B	11V	715.00	710.29			710.29		-	TAPERED
2326	287+61.00	5.0	IN B	24	714.91	710.26			710.26		-	TAPERED
2327	287+61.00	-35.0	CB A4	24	714.52	710.06			710.06		-	FLAT
2328	287+67.00	-40.0	MH A5	1 CL	714.94	708.85	708.55		710.02	708.55	-	FLAT
2329	289+21.00	35.0	CB C	24	713.37	709.48				YES	-	-
2330	289+21.00	11.0	IN B	24	713.85	709.36			709.36		-	TAPERED
2331	289+21.00	5.0	IN B	11V	713.53	709.33		709.68		-	-	TAPERED
2332	289+21.00	-35.0	CB A4	24	713.37	709.13			709.13		YES	FLAT
2333	289+26.00	-40.0	MH A5	1 CL	713.79		707.43		709.09	707.43	-	FLAT
2338	289+60.00	-66.8	CB C	8	710.08				707.87		-	-
2339	286+44.00	71.9	CB A5	24	714.36			709.20	710.00	710.51	-	FLAT
2340	286+46.60	81.9	CB C	24	714.36						-	-
2341	287+01.50	65.0	CB A5	24	714.36			708.97	710.08	708.97	-	FLAT
2342	287+00.00	82.0	CB C	24	714.36						-	-
2343	286+15.00	64.4	FES 24	-			711.11				-	-
2344	287+39.00	60.3	FES 24	-						708.82	-	-
2355	288+41.00	5.0	CB C	11V	714.11			710.08			-	-
2356	285+50.00	-5.0	IN B	11V	710.10			711.93			-	TAPERED
2366	287+59.60	-54.6	MH A4	1 CL	714.69	708.85			708.85		-	TAPERED
2367	283+84.5	-64.2	FES 15	-							-	-
2368	283-87.5	-61.5	IN B	1 CL	715.80			712.10			-	TAPERED
2370	280+18.00	56.0	FES 18	-							-	-
2371	280+43.00	56.0	FES 18	-					717.48		-	-

*** FRAME & GRATE TO BE LOCATED IN THE PARKWAY AREA (FRAMES & GRATES NOT PERMITTED IN THE BIKE PATH)
A INLET TO BE ADJUSTED (SPECIAL)

CULVERT TABLE

STRUCTURE		PIPE				INVERT		TRENCH BACKFILL	
U. S.	D. S.	LENGTH	DIAMETER	CL	TYPE	SLOPE (FT/FT)	U. S.	D. S.	TRENCH BACKFILL
2370	2371	25	18	D	1	0.0050	717.60	717.48	1.8

NOTES:
1. FOR DRAINAGE NOTES SEE FIRST PAGE DRAINAGE AND UTILITY PLANS.

REVISIONS		ILLINOIS DEPARTMENT OF TRANSPORTATION
NAME	DATE	
		DRAINAGE AND UTILITIES
		SCALE: 1" = 50'
		DRAWN BY: BAE
		CHECKED BY: GB