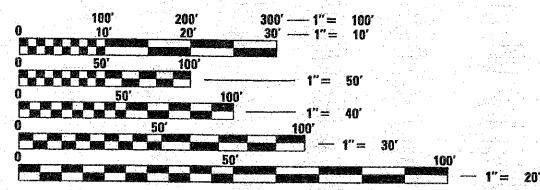
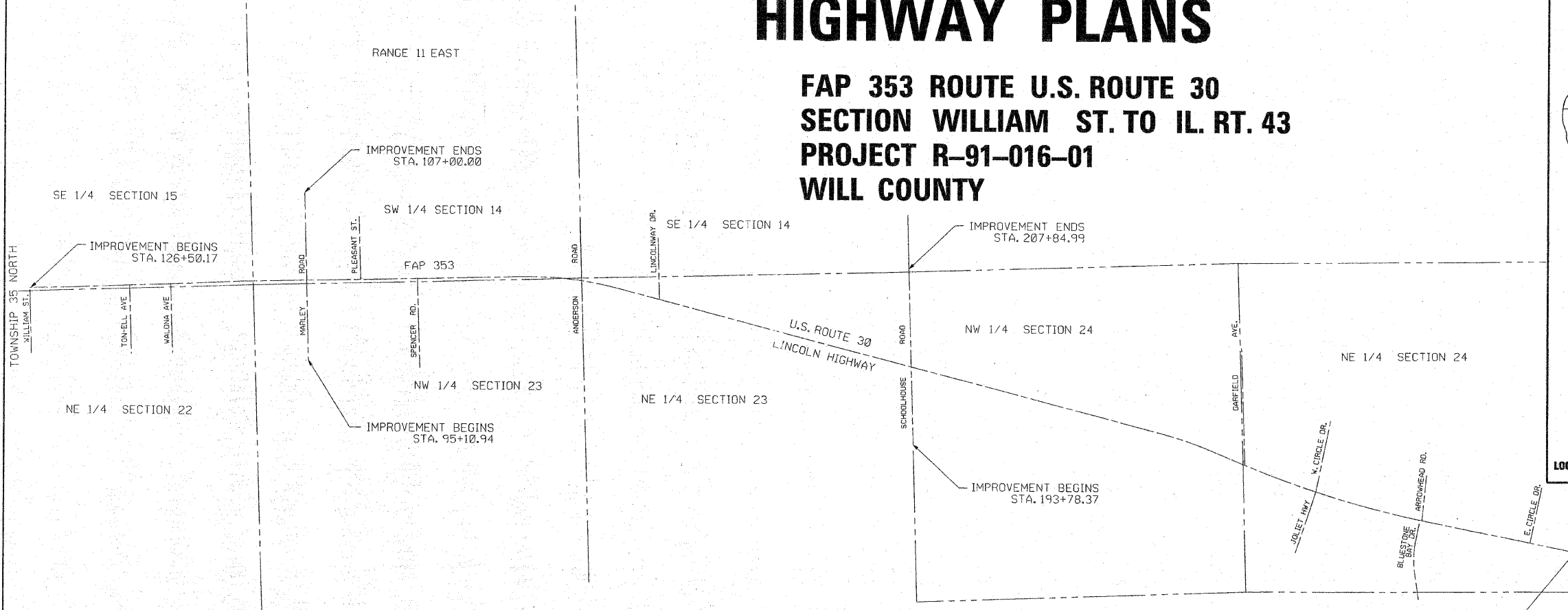
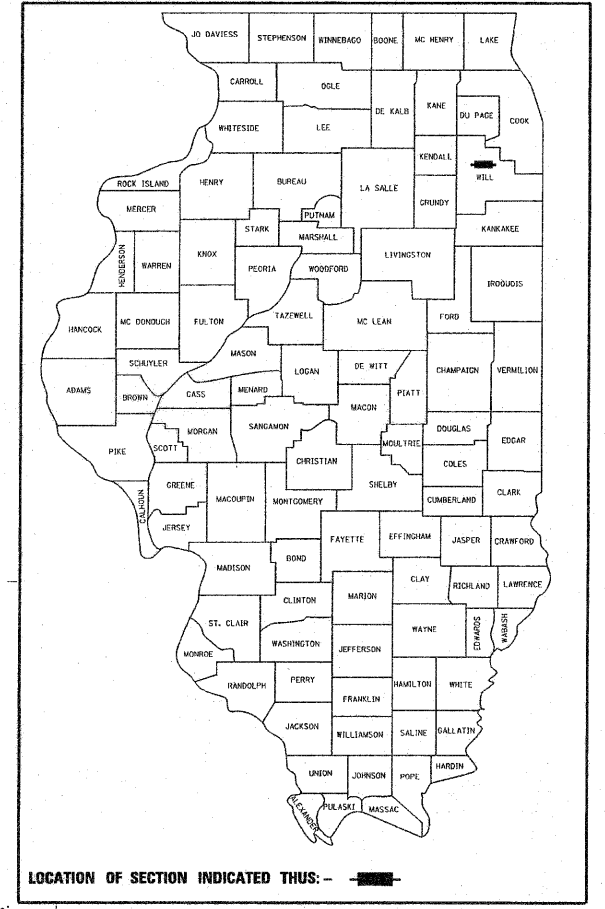


F.A. RTE.	SECTION	COUNTY	TOTAL SHEETS	SHEET NO.
			1	1

STATE OF ILLINOIS  
DEPARTMENT OF TRANSPORTATION  
DIVISION OF HIGHWAYS

**PROPOSED  
HIGHWAY PLANS**

FAP 353 ROUTE U.S. ROUTE 30  
SECTION WILLIAM ST. TO IL. RT. 43  
PROJECT R-91-016-01  
WILL COUNTY



FULL SIZE PLANS HAVE BEEN PREPARED USING STANDARD ENGINEERING SCALES. REDUCED SIZED PLANS WILL NOT CONFORM TO STANDARD SCALES. IN MAKING MEASUREMENTS ON REDUCED PLANS, THE ABOVE SCALES MAY BE USED.

J.U.L.I.E.  
JOINT UTILITY LOCATION INFORMATION FOR EXCAVATION  
1-800-892-0123

PROJECT LENGTH = 12695.80 L.F. = 2.40 MILES FAP 353 (U.S. ROUTE 30)  
1189.06 L.F. = 0.23 MILES MARLEY ROAD  
1405.62 L.F. = 0.27 MILES SCHOOLHOUSE ROAD

IMPROVEMENT ENDS  
STA. 253+45.97

STATE OF ILLINOIS  
DEPARTMENT OF TRANSPORTATION  
DIVISION OF HIGHWAYS

SUBMITTED \_\_\_\_\_ 20 \_\_\_\_\_

DEPUTY DIRECTOR OF HIGHWAYS, REGION ENGINEER  
\_\_\_\_\_ 20 \_\_\_\_\_

ENGINEER OF DESIGN AND ENVIRONMENT  
\_\_\_\_\_ 20 \_\_\_\_\_

DIRECTOR OF HIGHWAYS, CHIEF ENGINEER

**PRINTED BY THE AUTHORITY  
OF THE STATE OF ILLINOIS**

CONTRACT NO.

RECEIVED  
AUG 26 2006  
PLATS & LEGALS