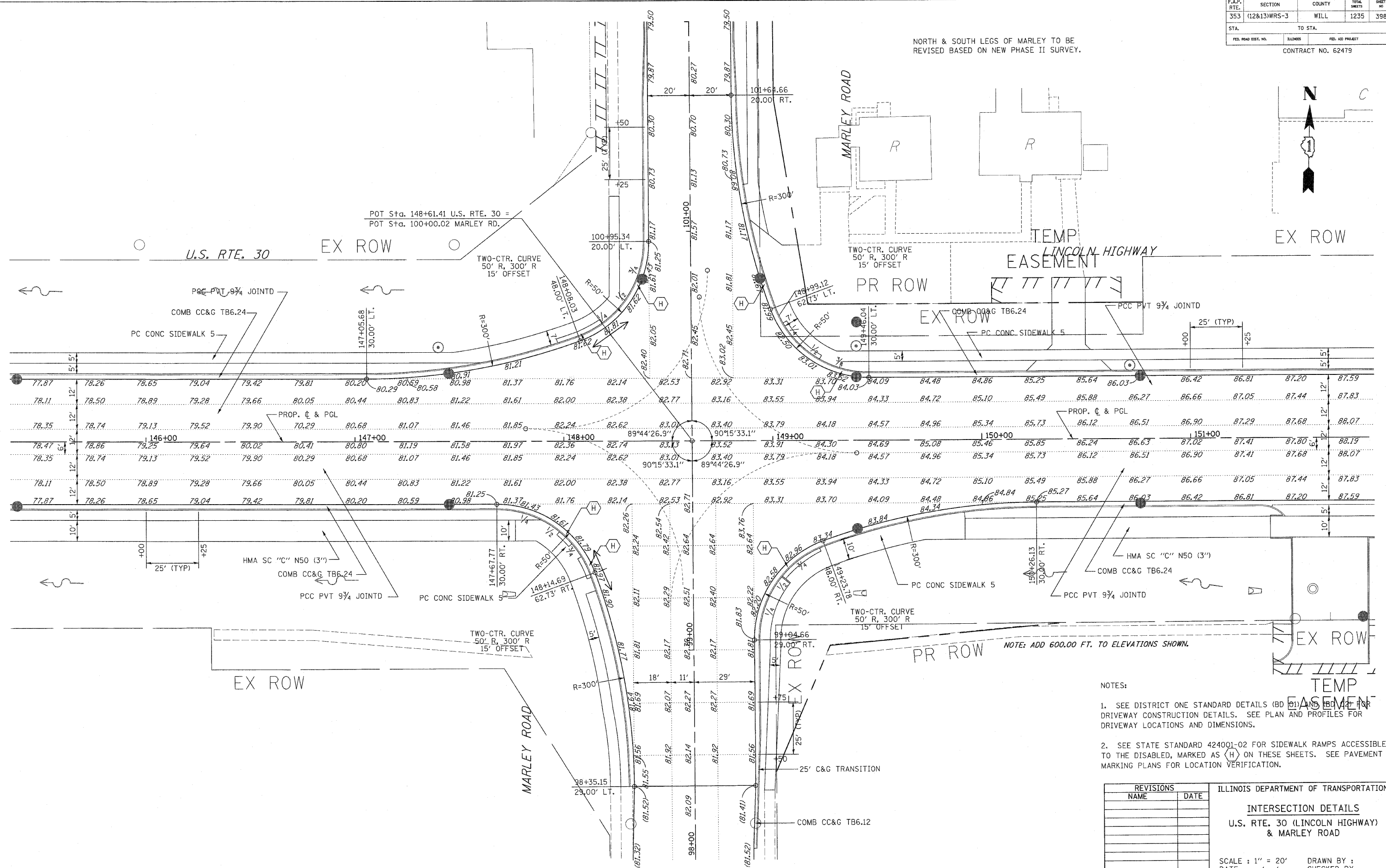
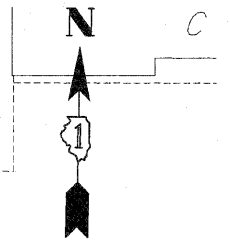


F.A.P. RTE.	SECTION	COUNTY	TOTAL SHEETS	SHEET NO.
353	(12&13)WRS-3	WILL	1235	398
STA.	TO STA.			
FED. ROAD DIST. NO.	ILLINOIS	FED. AID PROJECT		

CONTRACT NO. 62479

NORTH & SOUTH LEGS OF MARLEY TO BE REVISED BASED ON NEW PHASE II SURVEY.



- NOTES:
- SEE DISTRICT ONE STANDARD DETAILS (BD 01) AND (BD 02) FOR DRIVEWAY CONSTRUCTION DETAILS. SEE PLAN AND PROFILES FOR DRIVEWAY LOCATIONS AND DIMENSIONS.
 - SEE STATE STANDARD 424001-02 FOR SIDEWALK RAMPS ACCESSIBLE TO THE DISABLED, MARKED AS (H) ON THESE SHEETS. SEE PAVEMENT MARKING PLANS FOR LOCATION VERIFICATION.

REVISIONS	
NAME	DATE

ILLINOIS DEPARTMENT OF TRANSPORTATION
INTERSECTION DETAILS
 U.S. RTE. 30 (LINCOLN HIGHWAY)
 & MARLEY ROAD
 SCALE : 1" = 20'
 DATE : / / DRAWN BY :
 CHECKED BY :