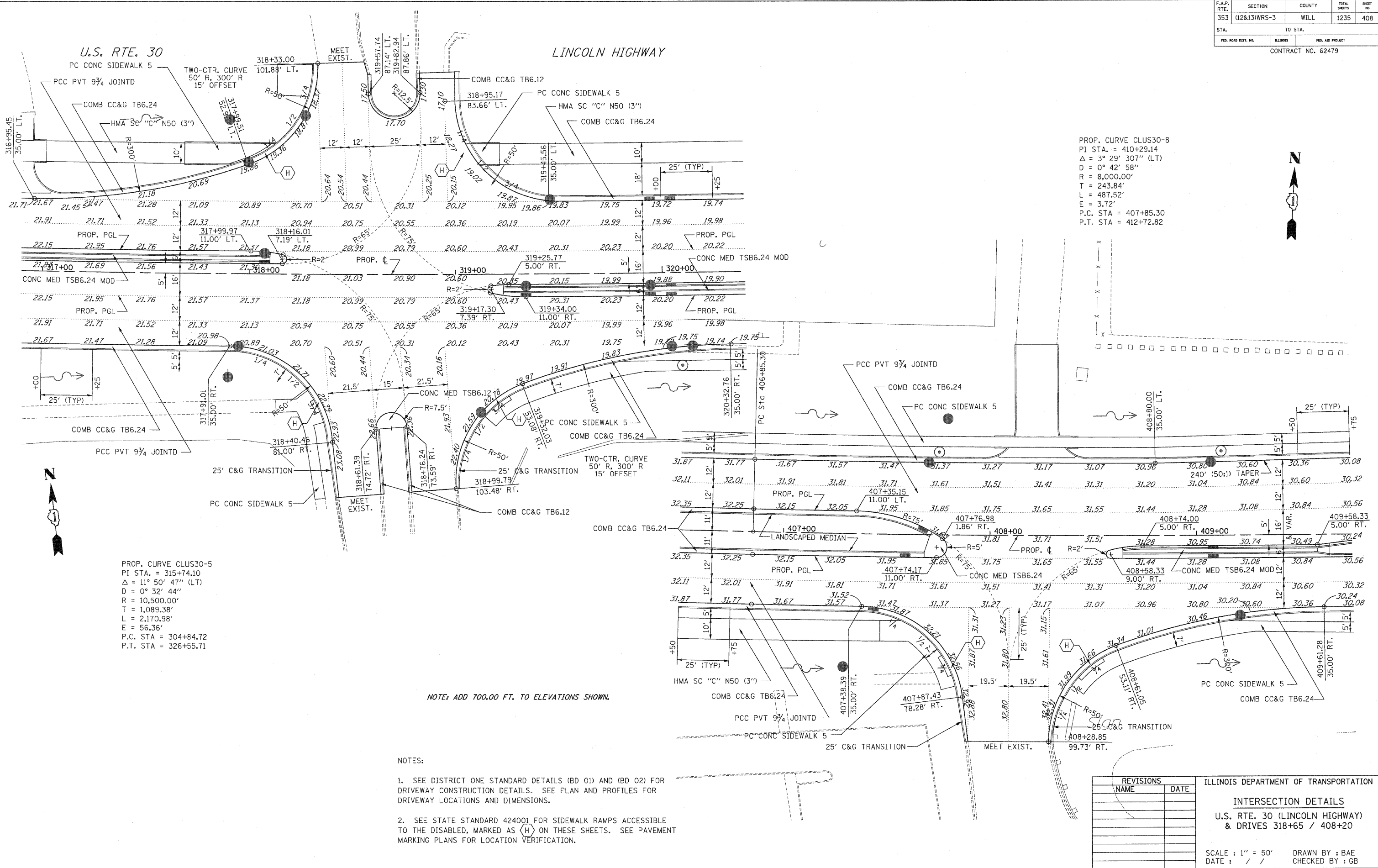


F.A.P. RTE.	SECTION	COUNTY	TOTAL SHEETS	SHEET NO
353	(12&13)WRS-3	WILL	1235	408
STA.	TO STA.			
FED. ROAD DIST. NO.	ILLINOIS	FED. AID PROJECT		
CONTRACT NO. 62479				



PROP. CURVE CLUS30-8
 PI STA. = 410+29.14
 $\Delta = 3^\circ 29' 30.7''$ (LT)
 $D = 0^\circ 42' 58''$
 $R = 8,000.00'$
 $T = 243.84'$
 $L = 487.52'$
 $E = 3.72'$
 P.C. STA = 407+85.30
 P.T. STA = 412+72.82

PROP. CURVE CLUS30-5
 PI STA. = 315+74.10
 $\Delta = 11^\circ 50' 47''$ (LT)
 $D = 0^\circ 32' 44''$
 $R = 10,500.00'$
 $T = 1,089.38'$
 $L = 2,170.98'$
 $E = 56.36'$
 P.C. STA = 304+84.72
 P.T. STA = 326+55.71

NOTE: ADD 700.00 FT. TO ELEVATIONS SHOWN.

- NOTES:
- SEE DISTRICT ONE STANDARD DETAILS (BD 01) AND (BD 02) FOR DRIVEWAY CONSTRUCTION DETAILS. SEE PLAN AND PROFILES FOR DRIVEWAY LOCATIONS AND DIMENSIONS.
 - SEE STATE STANDARD 424001 FOR SIDEWALK RAMP ACCESSIBLE TO THE DISABLED, MARKED AS (H) ON THESE SHEETS. SEE PAVEMENT MARKING PLANS FOR LOCATION VERIFICATION.

REVISIONS	
NAME	DATE

ILLINOIS DEPARTMENT OF TRANSPORTATION
INTERSECTION DETAILS
 U.S. RTE. 30 (LINCOLN HIGHWAY)
 & DRIVES 318+65 / 408+20
 SCALE : 1" = 50'
 DATE : / /
 DRAWN BY : BAE
 CHECKED BY : GB