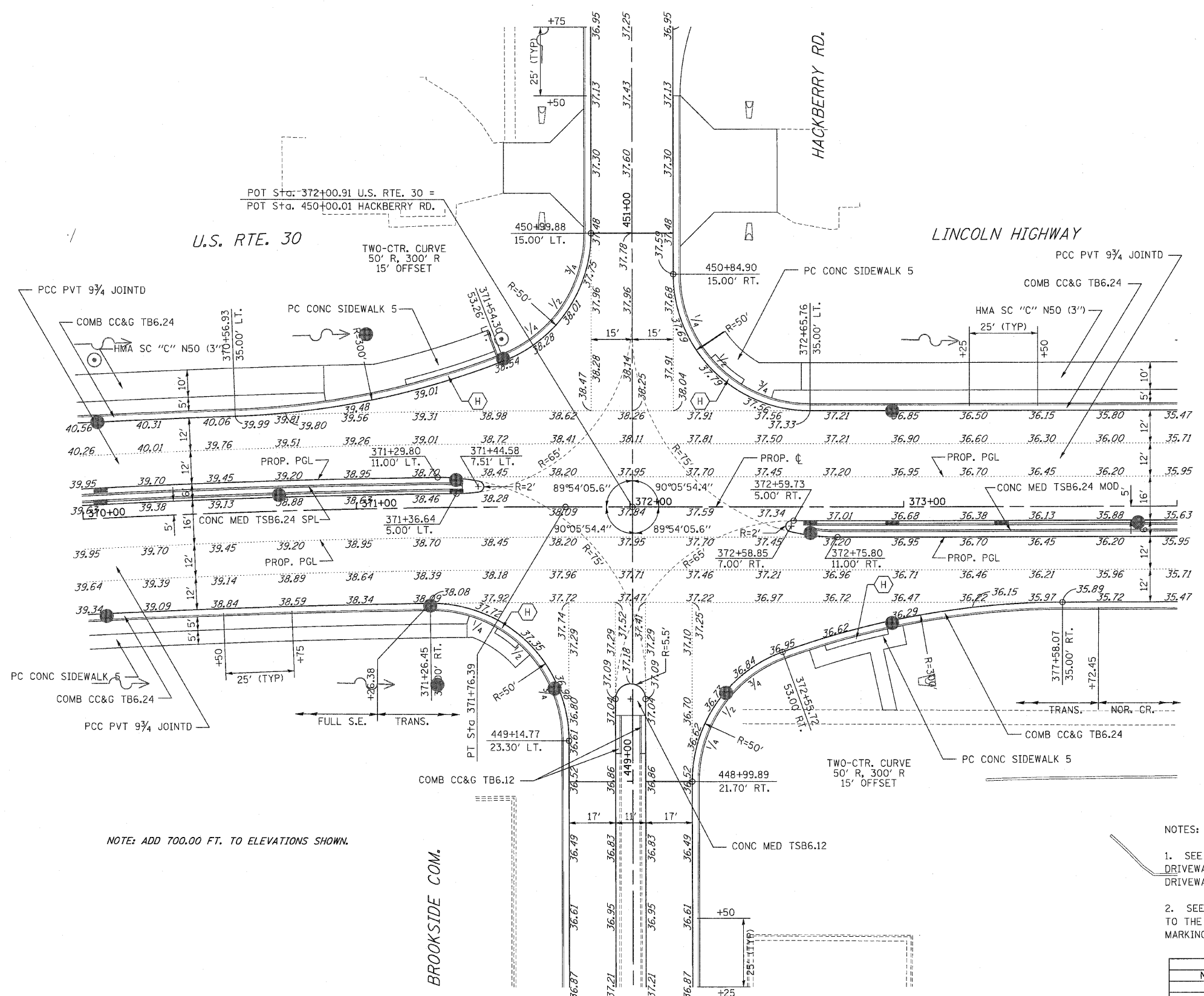


F.A.P. RTE.	SECTION	COUNTY	TOTAL SHEETS	SHEET NO.
353	(12&13)WRS-3	WILL.	1235	411
STA.	TO STA.			
FED. ROAD DIST. NO.	ILLINOIS	FED. AID PROJECT		



CONTRACT NO. 62479



POT Sta: 372+00.91 U.S. RTE. 30 =
POT Sta: 450+00.01 HACKBERRY RD.

U.S. RTE. 30

LINCOLN HIGHWAY

HACKBERRY RD.

BROOKSIDE COM.

PROP. CURVE CLUS30-7
PI STA. = 362+63.70
Δ = 32° 58' 26" (RT)
D = 1° 45' 17"
R = 3,265.00'
T = 966.33'
L = 1,879.01'
E = 140.00'
P.C. STA = 352+97.37
P.T. STA = 371+76.39

NOTE: ADD 700.00 FT. TO ELEVATIONS SHOWN.

NOTES:

- SEE DISTRICT ONE STANDARD DETAILS (BD 01) AND (BD 02) FOR DRIVEWAY CONSTRUCTION DETAILS. SEE PLAN AND PROFILES FOR DRIVEWAY LOCATIONS AND DIMENSIONS.
- SEE STATE STANDARD 424001 FOR SIDEWALK RAMP ACCESSIBLE TO THE DISABLED, MARKED AS (H) ON THESE SHEETS. SEE PAVEMENT MARKING PLANS FOR LOCATION VERIFICATION.

REVISIONS	
NAME	DATE

ILLINOIS DEPARTMENT OF TRANSPORTATION
INTERSECTION DETAILS
U.S. RTE. 30 (LINCOLN HIGHWAY)
& HACKBERRY RD.

SCALE : 1" = 50'
DATE : / /
DRAWN BY : BAE
CHECKED BY : GB