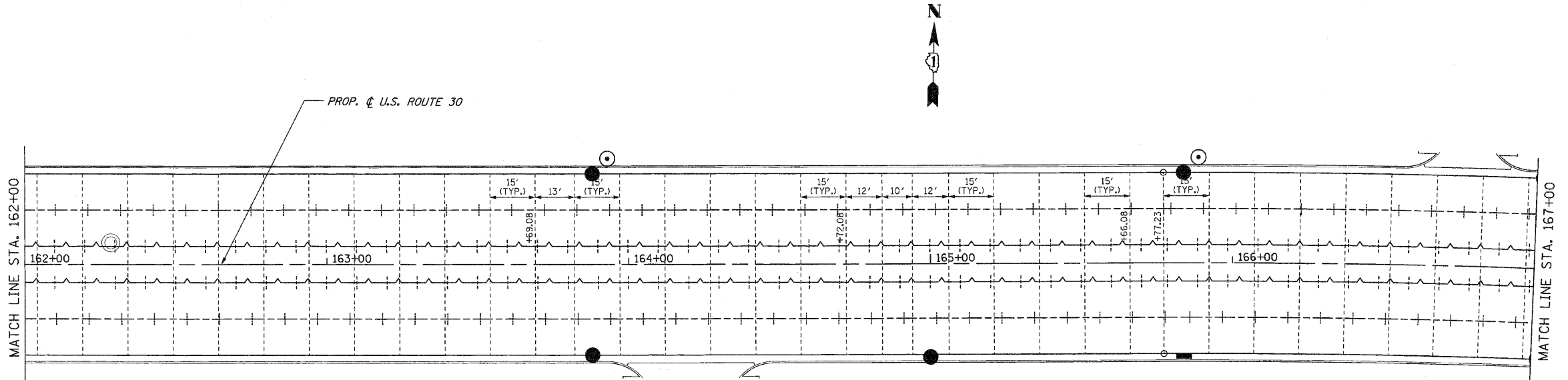
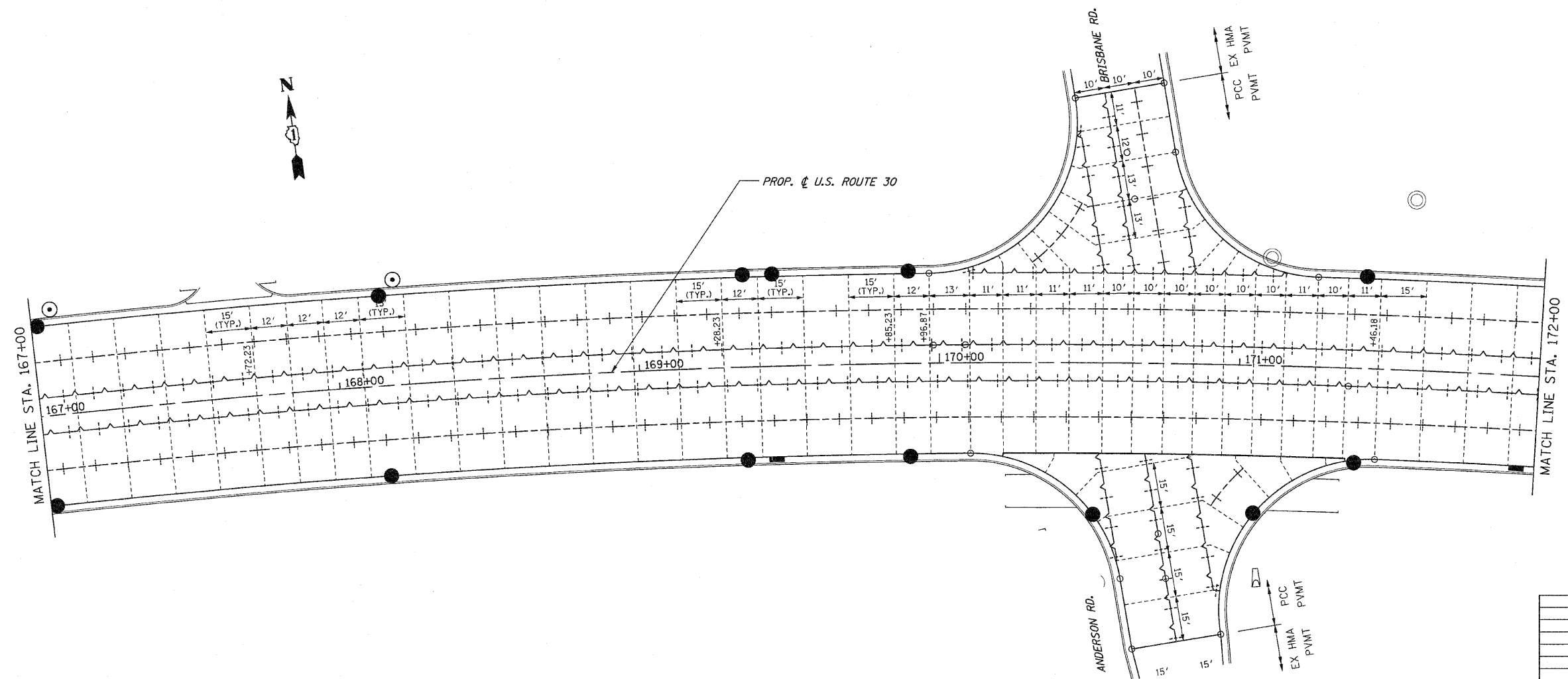


F.A.P. RTE.	SECTION	COUNTY	TOTAL SHEETS	SHEET NO.
353	(12&13)WRS-3	WILL.	1235	419
STA.	TO STA.			
FED. ROAD DIST. NO.	ILLINOIS	FED. AID PROJECT		
CONTRACT NO. 62479				



**NOTES**

1. FOR GEOMETRICS SEE INTERSECTION DETAIL SHEETS.
2. LONGITUDINAL AND TRANSVERSE JOINTS SHALL BE IN ACCORDANCE WITH STANDARD 420001.
3. TWO LANE JOINTED PORTLAND CEMENT CONCRETE PAVEMENT SHALL BE IN ACCORDANCE WITH STANDARD 420101.
4. CONTRACTION JOINT SPACING IS 15' UNLESS NOTED.
5. LONGITUDINAL JOINT SPACING IS 12' UNLESS NOTED.



**JOINT LEGEND**

- +—+— LONGITUDINAL CONSTRUCTION JOINT
- +—+— LONGITUDINAL SAWED JOINT
- - - - - TRANSVERSE CONTRACTION JOINT
- — — — — EXPANSION JOINT
- =====  
=====  
===== PAVEMENT SEPARATION JOINT

REVISIONS	
NAME	DATE

ILLINOIS DEPARTMENT OF TRANSPORTATION  
**PAVEMENT JOINT DETAILS**  
 U.S. RTE. 30 (LINCOLN HIGHWAY)  
 STA. 162+00 TO STA. 172+00  
 SCALE : 1" = 20'  
 DATE : / / DRAWN BY : BAE  
 CHECKED BY : GB