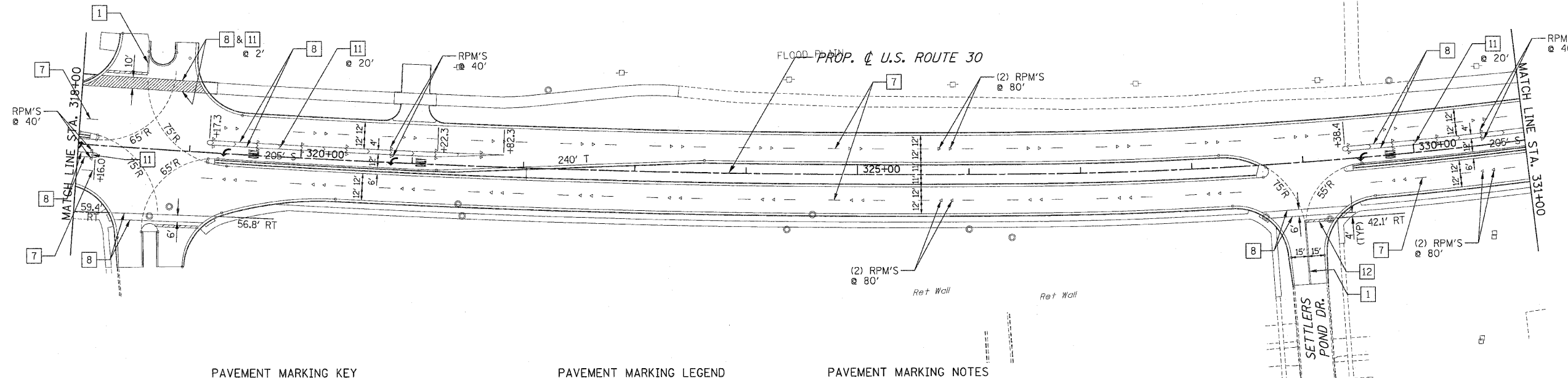


F.A.P. RTE.	SECTION	COUNTY	TOTAL SHEETS	SHEET NO.
353	(12&13)WRS-3	WILL.	1235	449
STA.	TO STA.			
FED. ROAD DIST. NO.	ILLINOIS	FED. AID PROJECT		
CONTRACT NO. 62479				



**PAVEMENT MARKING KEY**

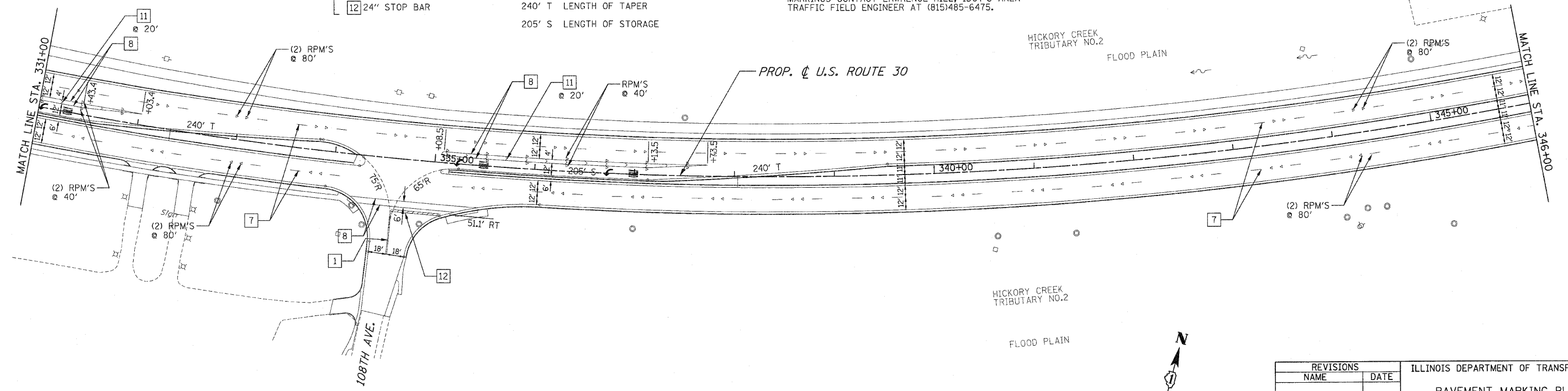
YELLOW	1	4" DOUBLE @ 11" C-C	WHITE	6	4" SOLID
	3	4" SOLID		7	4"- 30' SKIP/10' DASH
	4	4"- 30' SKIP/10' DASH		8	6" SOLID
	5	12" DIAGONALS @ 45°		9	6"- 6' SKIP/2' DASH
				10	8" SOLID
				11	12" SOLID @ 45°
				12	24" STOP BAR

**PAVEMENT MARKING LEGEND**

- LETTERS AND SYMBOLS
- STOP LINE, 24" WHITE
- RAISED PAVEMENT MARKER (RPM), ONE-WAY CRYSTAL
- RAISED PAVEMENT MARKER (RPM), ONE-WAY AMBER
- RAISED PAVEMENT MARKER (RPM), TWO-WAY AMBER
- 240' T LENGTH OF TAPER
- 205' S LENGTH OF STORAGE

**PAVEMENT MARKING NOTES**

1. THERMOPLASTIC PAVEMENT MARKINGS SHALL BE APPLIED ON BITUMINOUS PAVEMENT.
2. POLYUREA PAVEMENT MARKINGS SHALL BE APPLIED ON P.C. CONCRETE PAVEMENT.
3. PAVEMENT MARKINGS AND RAISED PAVEMENT MARKERS SHALL BE PER DISTRICT ONE PAVEMENT MARKING AND RAISED PAVEMENT MARKERS DETAIL.
4. TWO WEEKS PRIOR TO PLACING PERMANENT PAVEMENT MARKINGS CONTACT LAWRENCE HILL, IDOT'S AREA TRAFFIC FIELD ENGINEER AT (815)485-6475.



REVISIONS	
NAME	DATE

ILLINOIS DEPARTMENT OF TRANSPORTATION  
**PAVEMENT MARKING PLANS**  
 U.S. RTE. 30 (LINCOLN HIGHWAY)  
 STA. 318+00 TO STA. 346+00  
 SCALE : 1" = 50'  
 DATE : 10/12/2010  
 DRAWN BY : BAE  
 CHECKED BY : GB