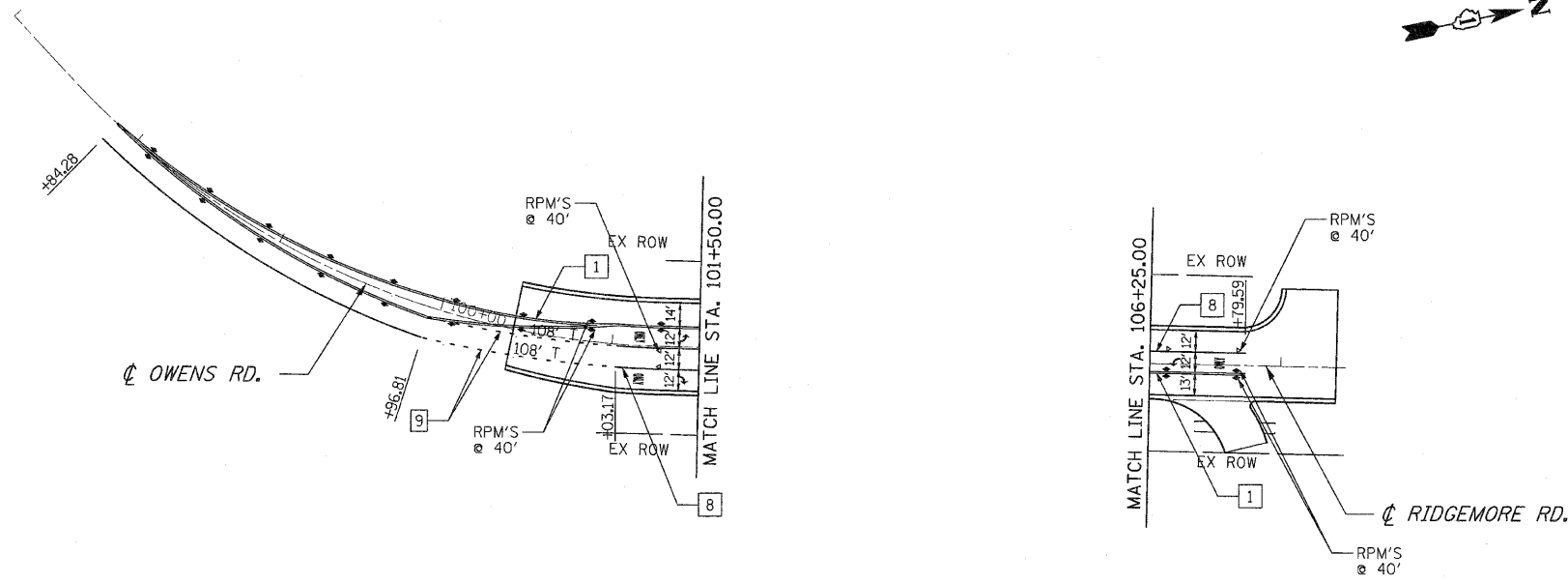


U.S. ROUTE 30

F.A.P. RTE.	SECTION	COUNTY	TOTAL SHEETS	SHEET NO
353	02&13WRS-3	WILL	1235	455
STA.		TO STA.		
FED. ROAD DIST. NO.	ILLINOIS	FED. AID PROJECT		
CONTRACT NO. 62479				



PAVEMENT MARKING KEY

YELLOW	1	4" DOUBLE (@ 11" C-C)	WHITE	6	4" SOLID
	3	4" SOLID		7	4"- 30' SKIP/10' DASH
	4	4"- 30' SKIP/10' DASH		8	6" SOLID
	5	12" DIAGONALS @ 45°		9	6"- 6' SKIP/2' DASH
				10	8" SOLID
		11	12" SOLID @ 45°		
		12	24" STOP BAR		

PAVEMENT MARKING LEGEND

- LETTERS AND SYMBOLS
- STOP LINE, 24" WHITE
- RAISED PAVEMENT MARKER (RPM), ONE-WAY CRYSTAL
- RAISED PAVEMENT MARKER (RPM), ONE-WAY AMBER
- RAISED PAVEMENT MARKER (RPM), TWO-WAY AMBER
- 240' T LENGTH OF TAPER
- 205' S LENGTH OF STORAGE

PAVEMENT MARKING NOTES

1. THERMOPLASTIC PAVEMENT MARKINGS SHALL BE APPLIED ON BITUMINOUS PAVEMENT.
2. POLYUREA PAVEMENT MARKINGS SHALL BE APPLIED ON P.C. CONCRETE PAVEMENT.
3. PAVEMENT MARKINGS AND RAISED PAVEMENT MARKERS SHALL BE PER DISTRICT ONE PAVEMENT MARKING AND RAISED PAVEMENT MARKERS DETAIL.
4. TWO WEEKS PRIOR TO PLACING PERMANENT PAVEMENT MARKINGS CONTACT THE VILLAGE OF MOKENA TRAFFIC FIELD ENGINEER AT (708) 479-3927.

REVISIONS		ILLINOIS DEPARTMENT OF TRANSPORTATION
NAME	DATE	
		PAVEMENT MARKING PLANS RIDGEMORE ROAD & OWENS ROAD STA. _____ TO STA. _____ SCALE : 1" = 50' DRAWN BY : BAE DATE : 10/12/2010 CHECKED BY : GB