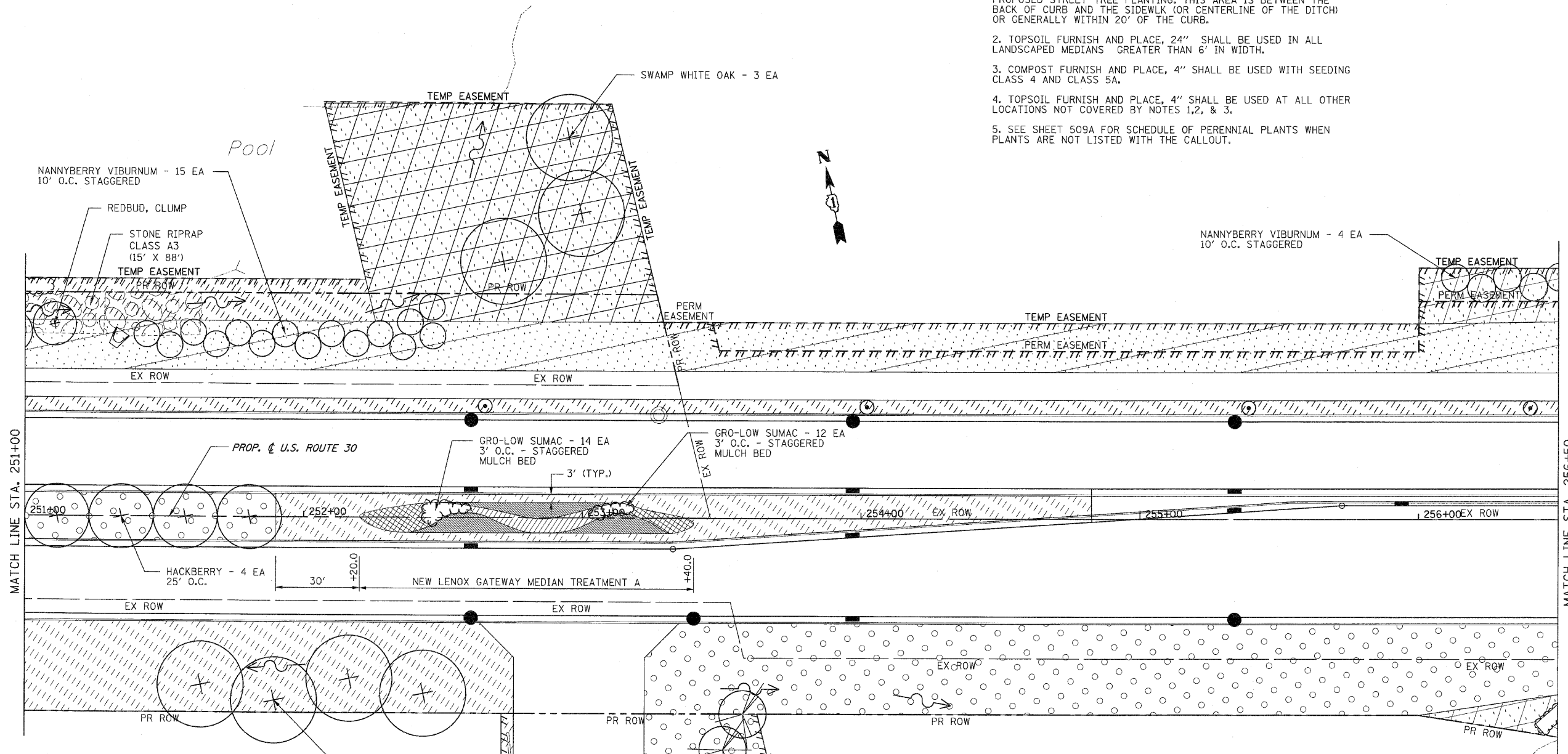


F.A.P. RTE.	SECTION	COUNTY	TOTAL SHEETS	SHEET NO.
353	(12&13)WRS-3	WILL	1235	478
STA.	TO STA.			
FED. ROAD DIST. NO.	BLMIS	FED. AID PROJECT		
CONTRACT NO. 62479				

LANDSCAPING GENERAL NOTES

1. TOPSOIL FURNISH AND PLACE, 8" SHALL BE USED IN PARKWAYS (WITH AND WITHOUT SIDEWALKS) ALONG U.S. 30 TO FACILITATE PROPOSED STREET TREE PLANTING. THIS AREA IS BETWEEN THE BACK OF CURB AND THE SIDEWALK (OR CENTERLINE OF THE DITCH) OR GENERALLY WITHIN 20' OF THE CURB.
2. TOPSOIL FURNISH AND PLACE, 24" SHALL BE USED IN ALL LANDSCAPED MEDIANS GREATER THAN 6' IN WIDTH.
3. COMPOST FURNISH AND PLACE, 4" SHALL BE USED WITH SEEDING CLASS 4 AND CLASS 5A.
4. TOPSOIL FURNISH AND PLACE, 4" SHALL BE USED AT ALL OTHER LOCATIONS NOT COVERED BY NOTES 1, 2, & 3.
5. SEE SHEET 509A FOR SCHEDULE OF PERENNIAL PLANTS WHEN PLANTS ARE NOT LISTED WITH THE CALLOUT.



LEGEND

- | | |
|--------------------------------|--|
| SODDING, SALT TOLERANT | STONE RIPRAP, CLASS AS SPECIFIED |
| SEEDING, CLASS 2A | SEEDING, CLASS 4B (MODIFIED) WETLAND MIX |
| SEEDING, CLASS 4 & 5A COMBINED | EXISTING SODDING |
| SEEDING, CLASS 4 | EXISTING SEEDING, CLASS 4 |
| SEEDING, CLASS 1 | |
| PERENNIAL PLANTS | |
-
- | |
|--|
| RUDBECKIA SPECIOSA 'VIETTE'S LITTLE SUZY' (DWARF BLACK-EYED SUSAN) - 12" O.C. - 348 EA
SPOROBOLUS HETEROLEPSIS (PRAIRIE DROPSEED) - 12" O.C. - 232 EA |
| BAPTISIA 'TWILITE' (TWILITE FALSE INDIGO) - 18" O.C. - 35 EA
PANICUM VIRGATUM 'ROTSTRAHLBUSCH' (RED SWITCH GRASS) - 18" O.C. - 20 EA |
| ECHINACEA PURPUREA 'TWILIGHT' (TWILIGHT CONEFLOWER) - 12" O.C. - 260 EA
SCHIZACHYRIUM SCOPARIUM (LITTLE BLUESTEM) - 12" O.C. - 175 EA |

NEW LENOX GATEWAY MEDIAN TREATMENT A - 150 S.Y. PERENNIAL PLANTS, ORNAMENTAL TYPE, GALLON POT - 10.70 UNIT

REVISIONS		ILLINOIS DEPARTMENT OF TRANSPORTATION
NAME	DATE	
		LANDSCAPING PLANS U.S. RTE. 30 (LINCOLN HIGHWAY) STA. 251+00 TO STA. 256+50 SCALE : 1" = 20' DRAWN BY : BAE DATE : 10/12/2010 CHECKED BY : GB