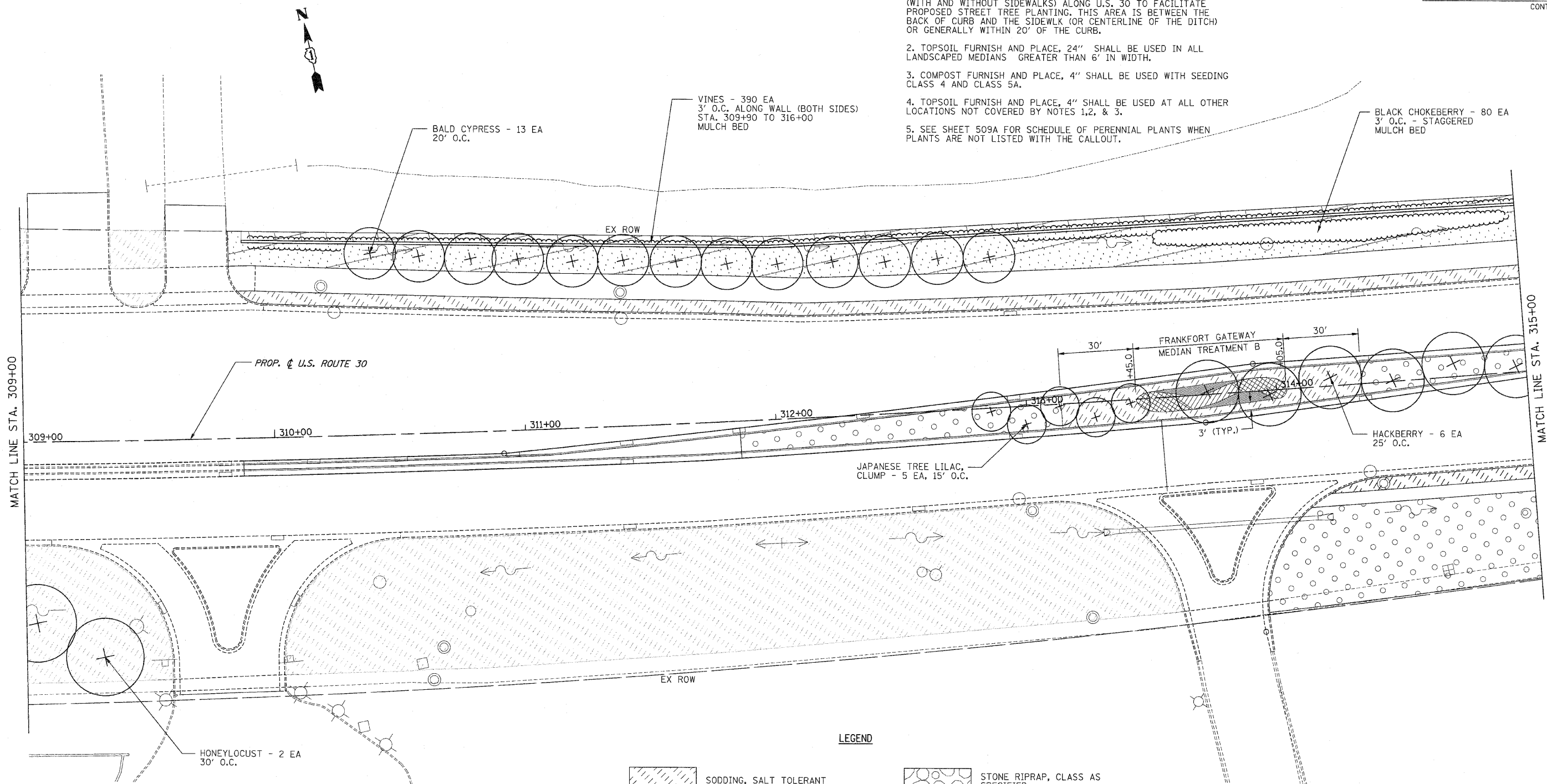


F.A.P. RTE.	SECTION	COUNTY	TOTAL SHEETS	SHEET NO.
353	(12&13)WRS-3	WILL	1235	488
STA.		TO STA.		
FED. ROAD DIST. NO.		BLDG.	FED. AID PROJECT	
CONTRACT NO. 62479				

**LANDSCAPING GENERAL NOTES**

1. TOPSOIL FURNISH AND PLACE, 8" SHALL BE USED IN PARKWAYS (WITH AND WITHOUT SIDEWALKS) ALONG U.S. 30 TO FACILITATE PROPOSED STREET TREE PLANTING. THIS AREA IS BETWEEN THE BACK OF CURB AND THE SIDEWALK (OR CENTERLINE OF THE DITCH) OR GENERALLY WITHIN 20' OF THE CURB.
2. TOPSOIL FURNISH AND PLACE, 24" SHALL BE USED IN ALL LANDSCAPED MEDIANS GREATER THAN 6' IN WIDTH.
3. COMPOST FURNISH AND PLACE, 4" SHALL BE USED WITH SEEDING CLASS 4 AND CLASS 5A.
4. TOPSOIL FURNISH AND PLACE, 4" SHALL BE USED AT ALL OTHER LOCATIONS NOT COVERED BY NOTES 1, 2, & 3.
5. SEE SHEET 509A FOR SCHEDULE OF PERENNIAL PLANTS WHEN PLANTS ARE NOT LISTED WITH THE CALLOUT.



**FRANKFORT GATEWAY  
MEDIAN TREATMENT B - 89 S.Y.  
PERENNIAL PLANTS, ORNAMENTAL TYPE,  
GALLON POT - 7.10 UNIT**

- RUDBECKIA SPECIOSA 'VIETTE'S LITTLE SUZY' (DWARF BLACK-EYED SUSAN) - 12" O.C. - 200 EA
- SPOROBOLUS HETEROLEPSIS - (PRAIRIE DROPSEED) 12" O.C. - 130 EA
- BAPTISIA AUSTRALIS (BLUE FALSE INDIGO) - 18" O.C. - 35 EA
- ANDROPOGON GERARDII (BIG BLUESTEM) - 18" O.C. - 25 EA
- ECHINACEA PURPUREA 'MAGNUS' (PURPLE CONEFLOWER) 12" O.C. - 192 EA
- SCHIZACHYRIUM SCOPARIUM (LITTLE BLUESTEM) 12" O.C. - 128 EA

**LEGEND**

- SODDING, SALT TOLERANT
- SEEDING, CLASS 2A
- SEEDING, CLASS 4 & 5A COMBINED
- SEEDING, CLASS 4
- SEEDING, CLASS 1
- PERENNIAL PLANTS
- STONE RIPRAP, CLASS AS SPECIFIED
- SEEDING, CLASS 4B (MODIFIED) WETLAND MIX
- EXISTING SODDING
- EXISTING SEEDING, CLASS 4

REVISIONS	
NAME	DATE

ILLINOIS DEPARTMENT OF TRANSPORTATION  
**LANDSCAPING PLANS**  
U.S. RTE. 30 (LINCOLN HIGHWAY)  
STA. 291+00 TO STA. 296+41.38  
SCALE: 1" = 20'  
DATE: 10/12/2010  
DRAWN BY: BAE  
CHECKED BY: GB