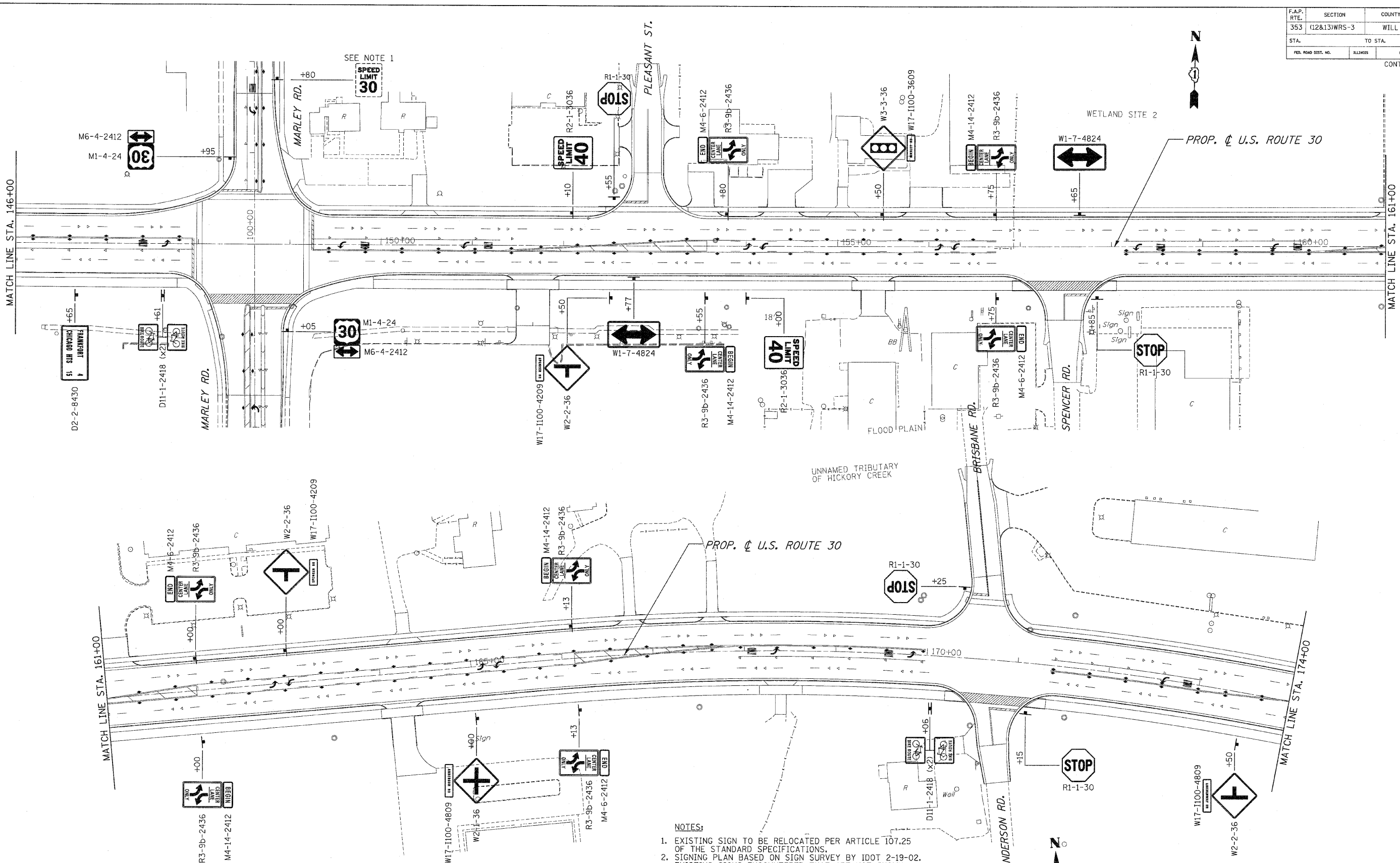


F.A.P. RTE.	SECTION	COUNTY	TOTAL SHEETS	SHEET NO
353	(12&13)WRS-3	WILL	1235	511
STA.		TO STA.		
FED. ROAD DIST. NO.		ILLINOIS	FED. AID PROJECT	
CONTRACT NO. 62479				



- NOTES:**
- EXISTING SIGN TO BE RELOCATED PER ARTICLE 107.25 OF THE STANDARD SPECIFICATIONS.
 - SIGNING PLAN BASED ON SIGN SURVEY BY IDOT 2-19-02. EXISTING SIGNS ENCOUNTERED THAT ARE NOT SHOWN IN THE PLAN SHALL BE RELOCATED PER ARTICLE 107.25 OF THE STANDARD SPECIFICATIONS OR REMOVED AS DIRECTED BY THE ENGINEER.
 - SIGNS PLACED OUTSIDE OF PAVEMENT SHALL BE MOUNTED ON WOODEN POSTS. SIGNS PLACED IN MEDIAN PAVEMENT SHALL BE MOUNTED ON TELESCOPING POSTS.
 - SIGNS SHALL BE MOUNTED ACCORDING TO HIGHWAY STANDARD 720006. SIGNS ADJACENT TO THE BIKE PATH SHALL MAINTAIN A MINIMUM 3 FOOT CLEARANCE FROM THE EDGE OF PATH TO THE EDGE OF SIGN.

REVISIONS	
NAME	DATE

ILLINOIS DEPARTMENT OF TRANSPORTATION

SIGNING PLANS

U.S. RTE. 30 (LINCOLN HIGHWAY)

STA. 146+00 TO STA. 174+00

SCALE : 1" = 50'
DATE : 10/12/2010

DRAWN BY : BAE
CHECKED BY : GB