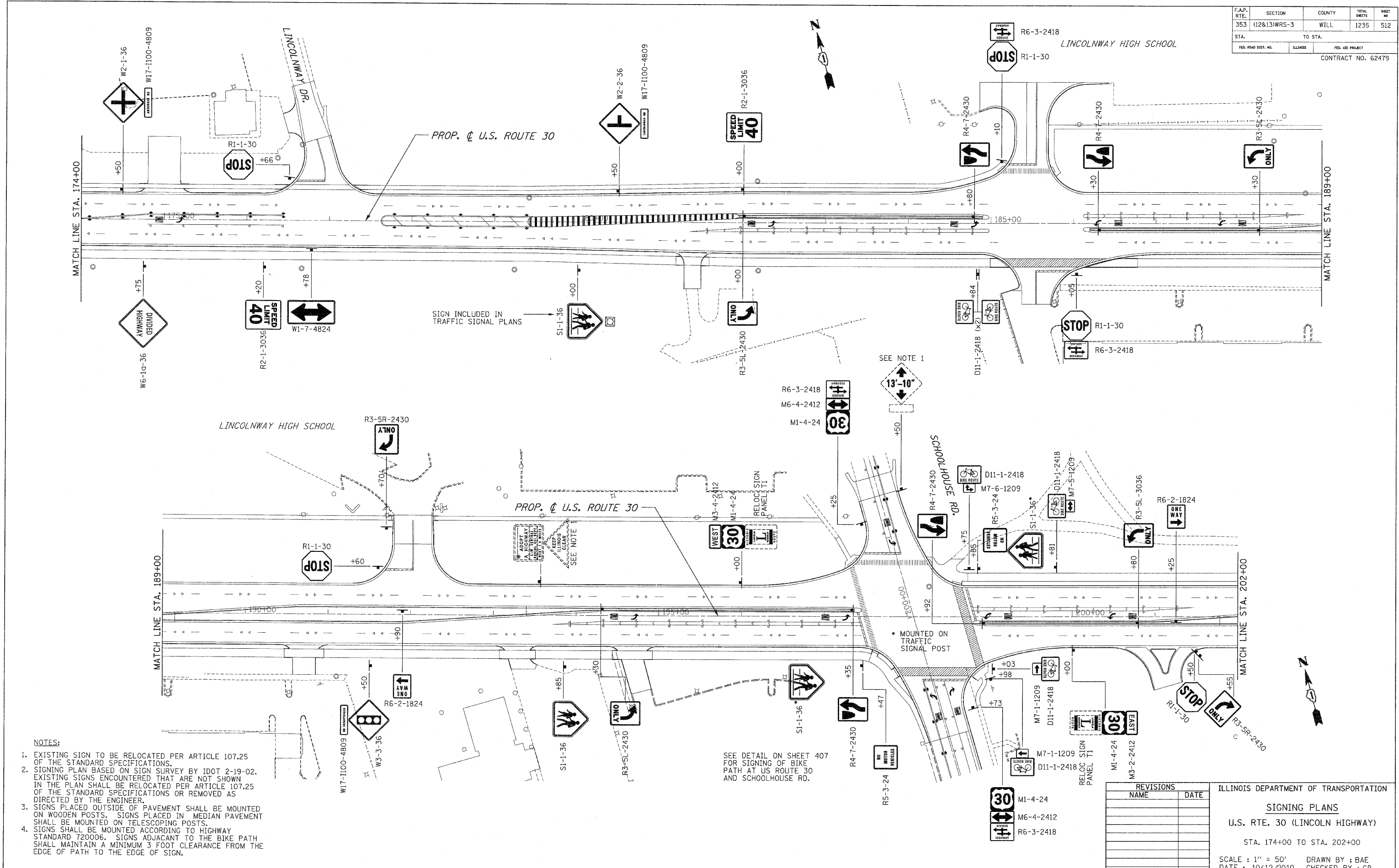


F.A.P. RTE.	SECTION	COUNTY	TOTAL SHEETS	SHEET NO.
353	(12&13)WRS-3	WILL	1235	512
STA.	TO STA.			
FED. ROAD DIST. NO.	SHEETS	FED. AID PROJECT		
CONTRACT NO. 62479				



- NOTES:
- EXISTING SIGN TO BE RELOCATED PER ARTICLE 107.25 OF THE STANDARD SPECIFICATIONS.
 - SIGNING PLAN BASED ON SIGN SURVEY BY IDOT 2-19-02. EXISTING SIGNS ENCOUNTERED THAT ARE NOT SHOWN IN THE PLAN SHALL BE RELOCATED PER ARTICLE 107.25 OF THE STANDARD SPECIFICATIONS OR REMOVED AS DIRECTED BY THE ENGINEER.
 - SIGNS PLACED OUTSIDE OF PAVEMENT SHALL BE MOUNTED ON WOODEN POSTS. SIGNS PLACED IN MEDIAN PAVEMENT SHALL BE MOUNTED ON TELESCOPING POSTS.
 - SIGNS SHALL BE MOUNTED ACCORDING TO HIGHWAY STANDARD 720006. SIGNS ADJACENT TO THE BIKE PATH SHALL MAINTAIN A MINIMUM 3 FOOT CLEARANCE FROM THE EDGE OF PATH TO THE EDGE OF SIGN.

SEE DETAIL ON SHEET 407 FOR SIGNING OF BIKE PATH AT US ROUTE 30 AND SCHOOLHOUSE RD.

REVISIONS	
NAME	DATE

ILLINOIS DEPARTMENT OF TRANSPORTATION
SIGNING PLANS
 U.S. RTE. 30 (LINCOLN HIGHWAY)
 STA. 174+00 TO STA. 202+00
 SCALE : 1" = 50'
 DATE : 10/12/2010
 DRAWN BY : BAE
 CHECKED BY : GB