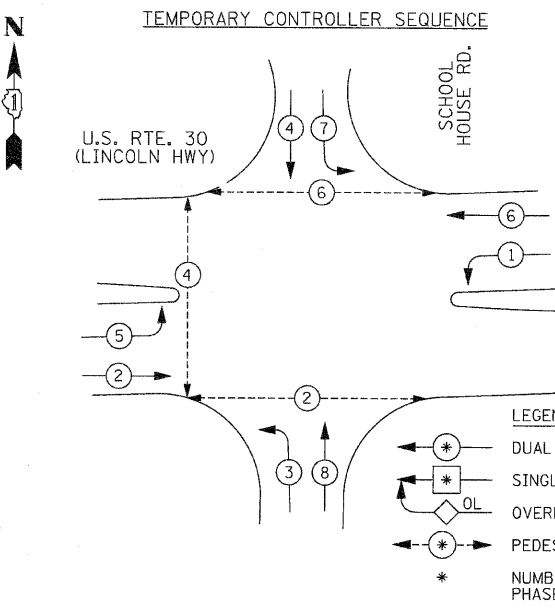


F.A.P. RTE.	SECTION	COUNTY	TOTAL SHEETS	SHEET NO.
353	(12&13)WRS-3	WILL.	1235	545
STA.	TO STA.			
FED. ROAD DIST. NO.	ILLINOIS	FED. AID PROJECT		

CONTRACT NO. 62479

**CONSTRUCTION NOTES:**

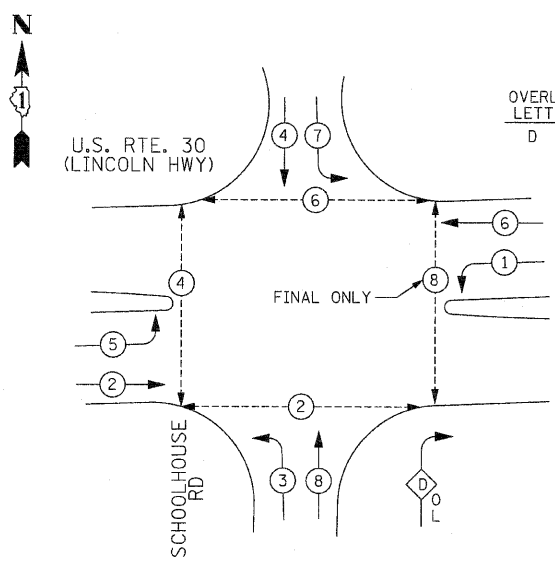
- ① ALL PEDESTRIAN SIGNAL HEADS SHALL BE BAGGED AND DISCONNECT WHEN EXISTING PAVEMENT IS REMOVED.
- ② ALL PEDESTRIAN SIGNAL HEADS SHALL REMAIN BAGGED UNTIL THE PAVEMENT IS RESTORED TO PROVIDE A SAFE CROSSING AREA. CONTRACTOR SHALL BE RESPONSIBLE FOR PROVIDING SAFE WALKING SURFACE BETWEEN EXISTING AND PROPOSED PAVEMENTS WHEN PEDESTRIAN PHASE IS PRESENT. THIS WORK SHALL NOT BE PAID FOR SEPARATELY BUT SHALL BE INCLUDED IN THE CONTRACT UNIT PRICE FOR "TEMPORARY TRAFFIC SIGNAL INSTALLATION"
- ③ PEDESTRIAN SIGNAL HEADS AT THIS LOCATION SHALL BE DETERMINED BY THE RESIDENT ENGINEER ON LOCATION.
- ④ TEMPORARY RADIO INTERCONNECT SHALL NOT BE REMOVED UNTIL FIBER INTERCONNECT FROM WASHINGTON ST. TO JOLIET HWY. IS INSTALLED AND OPERATIONAL.
- ⑤ THE PEDESTRIAN CROSS WALKS SHALL BE COORDINATED WITH THE HIGH SCHOOL DURING ALL STAGES OF CONSTRUCTION.
- ⑥ CONTRACTOR SHALL BE RESPONSIBLE FOR PROVIDING SAFE WALKING SURFACE BETWEEN EXISTING AND PROPOSED PAVEMENTS WHEN PEDESTRIAN PHASE IS PRESENT. THIS WORK SHALL NOT BE PAID FOR SEPARATELY BUT SHALL BE INCLUDED IN THE CONTRACT UNIT PRICE FOR "TEMPORARY TRAFFIC SIGNAL INSTALLATION"
- ⑦ THE ENTIRE SIGNAL HEAD TO BE BAGGED AND DISCONNECTED DURING STAGE 1A UNLESS SPECIFIC LENS ARE INDICATED TO BE BAGGED.  
THE ENTIRE SIGNAL HEAD TO BE BAGGED AND DURING STAGE 2A DISCONNECTED UNLESS SPECIFIC LENS ARE INDICATED TO BE BAGGED.
- ⑧ ARROW SIGNAL HEADS SHALL BE BAGGED AND DISCONNECTED EXCEPT FOR STAGE 3, STAGE 4 AND FINAL CONDITION.
- ⑩ SIGNAL HEAD ONLY TO BE USED DURING STAGE 3, STAGE 4 AND FINAL CONDITION.



**LEGEND**

- ⊕ DUAL ENTRY PHASE
- ⊙ SINGLE ENTRY PHASE
- OL OVERLAP
- ⊖ PEDESTRIAN PHASE
- \* NUMBER REFERS TO ASSOCIATED PHASE

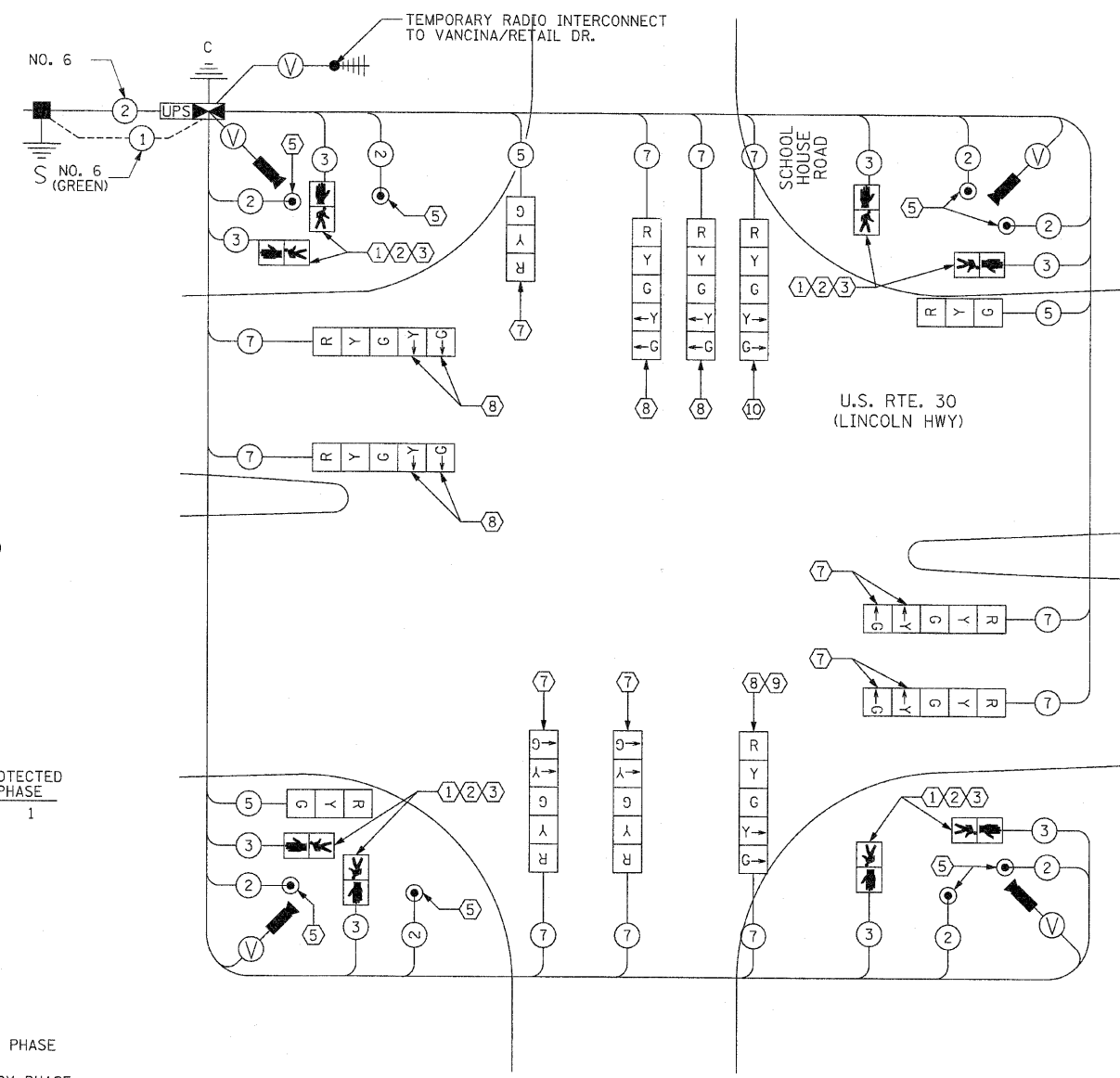
**TEMPORARY PHASE DESIGNATION DIAGRAM**  
EXISTING, PRESTAGE 1, STAGE 1, PRESTAGE 2 AND STAGE 2



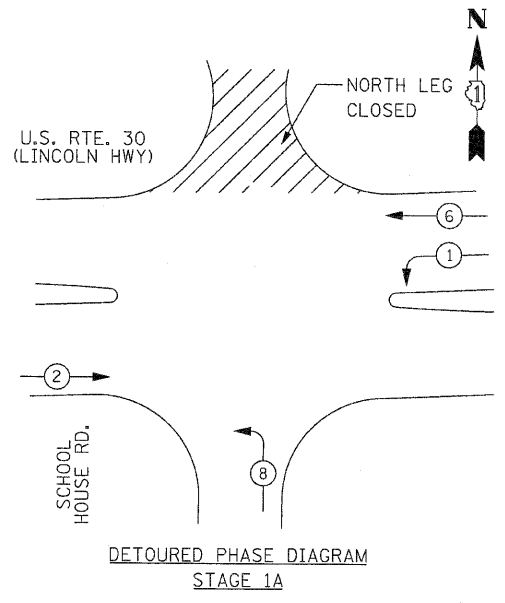
**LEGEND**

- ⊕ DUAL ENTRY PHASE
- ⊙ SINGLE ENTRY PHASE
- OL OVERLAP
- ⊖ PEDESTRIAN PHASE
- \* NUMBER REFERS TO ASSOCIATED PHASE

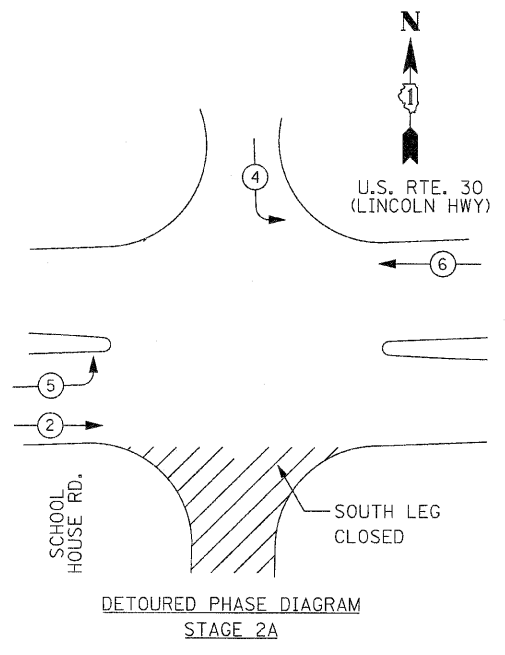
OVERLAP LETTER D = PERMISSIVE PHASE 8 + PROTECTED PHASE 1



**TEMPORARY CABLE PLAN**



**DETOURED PHASE DIAGRAM**  
STAGE 1A



**DETOURED PHASE DIAGRAM**  
STAGE 2A

I.D.O.T. TRAFFIC SIGNAL INSTALLATION ELECTRICAL SERVICE REQUIREMENTS					TOTAL WATTAGE
TYPE	NO. LAMPS	WATTAGE (INCAND.)	WATTAGE LED	% OPERATION	
SIGNAL (RED)	12	-	17	0.50	102.00
(YELLOW)	12	-	25	0.25	75.00
(GREEN)	12	-	15	0.25	45.00
ARROW	16	-	12	0.10	19.20
PED. SIGNAL	6	-	25	1.00	150.00
CONTROLLER	1	-	100	1.00	100.00
ILLUM. SIGN	0	-	-	0.05	-
VIDEO SYSTEM	1	-	150	-	150
FLASHER	0	-	-	0.50	0
ENERGY COSTS TO: ILLINOIS DEPARTMENT OF TRANSPORTATION 201 WEST CENTER COURT SCHAUMBURG, ILLINOIS 60196-1096 CONTACT: MR. HARRY JONES PHONE: (815) 724-5057 COMPANY: COM. ED.					TOTAL = 641.2

REVISIONS	
NAME	DATE

ILLINOIS DEPARTMENT OF TRANSPORTATION  
**TEMPORARY CABLE PLAN,  
TEMPORARY PHASE DESIGNATION  
DIAGRAM, TEMPORARY EMERGENCY  
VEHICLE PREEMPTION**

**US RTE. 30 AT SCHOOL HOUSE ROAD**

SCALE : 1" = NTS  
DATE : 10/12/2010

DRAWN BY : RG  
DESIGNED BY : GB  
CHECKED BY : ZH