

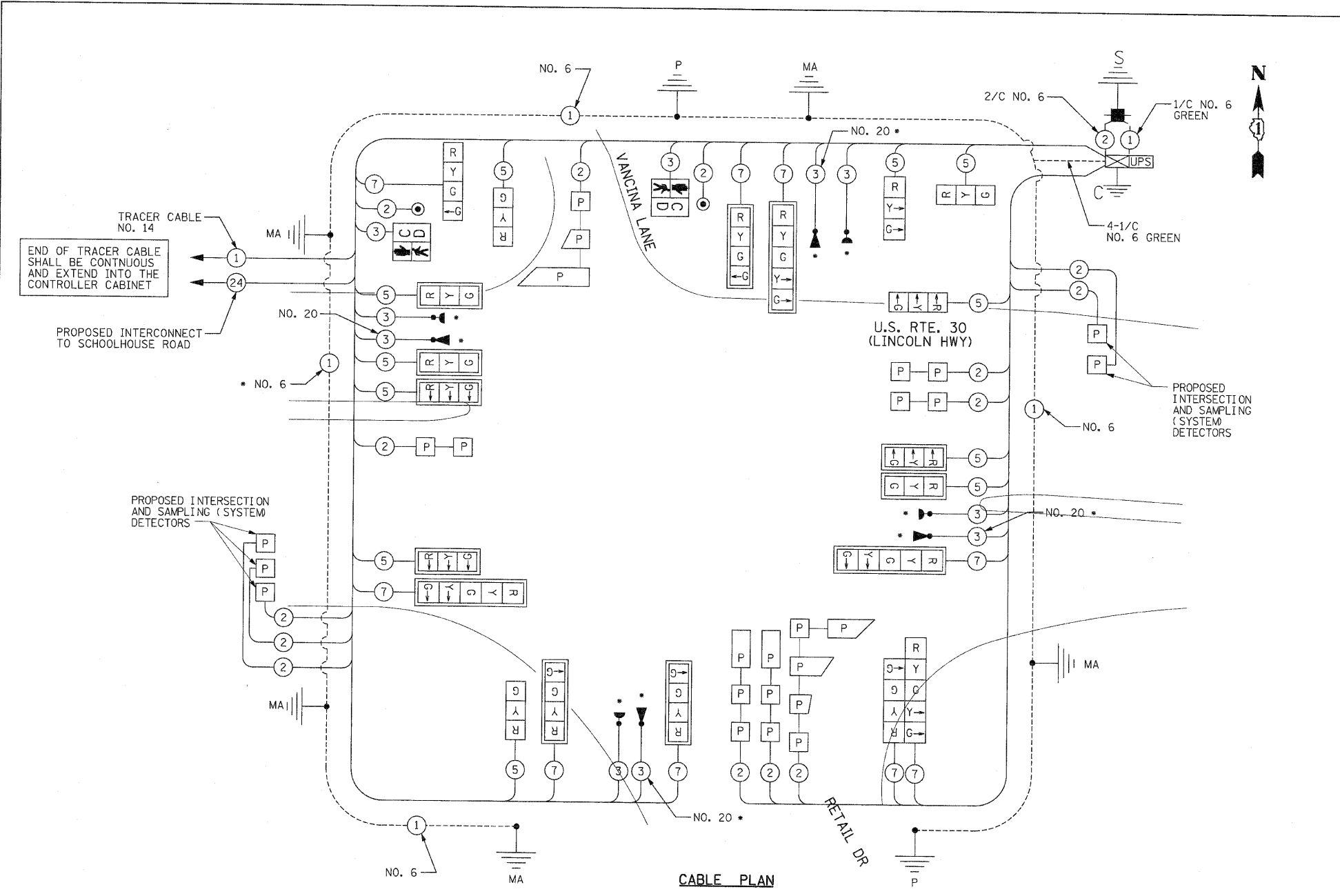
F.A.P. RTE.	SECTION	COUNTY	TOTAL SHEETS	SHEET NO.
353	(12&13)WRS-3	WILL	1235	570
STA.	TO STA.			
FED. ROAD DIST. NO.	ILLINOIS	FED. AID PROJECT		

CONTRACT NO. 62479

SCHEDULE OF QUANTITIES

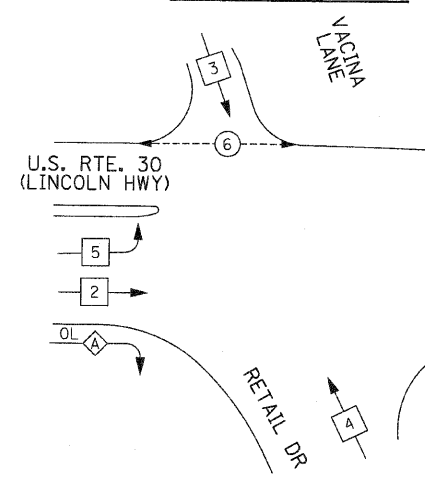
ITEM	UNIT	NEW LENOX	EPD
		QUANTITY	QUANTITY
SIGN PANEL - TYPE 1	SQ FT	50	
SIGN PANEL - TYPE 2	SQ FT	30	
CONDUIT IN TRENCH, 2" DIA., GALVANIZED STEEL	FOOT	470	
CONDUIT IN TRENCH, 2 1/2" DIA., GALVANIZED STEEL	FOOT	21	
CONDUIT IN TRENCH, 3" DIA., GALVANIZED STEEL	FOOT	88	
CONDUIT IN TRENCH, 4" DIA., GALVANIZED STEEL	FOOT	61	
CONDUIT PUSHED, 2" DIA., GALVANIZED STEEL	FOOT	367	
CONDUIT PUSHED, 2 1/2" DIA., GALVANIZED STEEL	FOOT	21	
CONDUIT PUSHED, 3" DIA., GALVANIZED STEEL	FOOT	16	
CONDUIT PUSHED, 4" DIA., GALVANIZED STEEL	EACH	423	
HANDHOLE	EACH	4	
HEAVY-DUTY HANDHOLE	EACH	3	
DOUBLE HANDHOLE	FOOT	2	
TRENCH AND BACKFILL FOR ELECTRICAL WORK	FOOT	561	
ELECTRIC CABLE IN CONDUIT, SIGNAL NO. 14 2C	FOOT	195	
ELECTRIC CABLE IN CONDUIT, SIGNAL NO. 14 3C	FOOT	1092	
ELECTRIC CABLE IN CONDUIT, SIGNAL NO. 14 5C	FOOT	2067	
ELECTRIC CABLE IN CONDUIT, SIGNAL NO. 14 7C	FOOT	2071	
ELECTRIC CABLE IN CONDUIT, LEAD-IN, NO. 14 1 PAIR	FOOT	3564	
ELECTRIC CABLE IN CONDUIT, SERVICE, NO. 6 2 C	EACH	49	
TRAFFIC SIGNAL POST, GALVANIZED STEEL 10 FT.	EACH	1	
TRAFFIC SIGNAL POST, GALVANIZED STEEL 16 FT.	EACH	1	
STEEL MAST ARM ASSEMBLY AND POLE, 24 FT.	EACH	1	
STEEL MAST ARM ASSEMBLY AND POLE, 26 FT.	EACH	1	
STEEL MAST ARM ASSEMBLY AND POLE, 46 FT.	EACH	1	
STEEL MAST ARM ASSEMBLY AND POLE, 48 FT.	FOOT	2	
CONCRETE FOUNDATION, TYPE A	FOOT	8	
CONCRETE FOUNDATION, TYPE C	FOOT	4	
CONCRETE FOUNDATION, TYPE E 30-INCH DIAMETER	FOOT	20	
CONCRETE FOUNDATION, TYPE E 36-INCH DIAMETER	EACH	39	
SIGNAL HEAD, LED, 1-FACE, 3-SECTION, MAST-ARM MOUNTED	EACH	6	
SIGNAL HEAD, LED, 1-FACE, 3-SECTION, BRACKET MOUNTED	EACH	1	
SIGNAL HEAD, LED, 1-FACE, 4-SECTION, MAST-ARM MOUNTED	EACH	3	
SIGNAL HEAD, LED, 1-FACE, 5-SECTION, MAST-ARM MOUNTED	EACH	3	
SIGNAL HEAD, LED, 2-FACE, 1-3 SECTION, 1-4 SECTION, BRACKET MOUNTED	EACH	1	
SIGNAL HEAD, LED, 2-FACE, 1-4 SECTION, 1-5 SECTION, BRACKET MOUNTED	EACH	1	
SIGNAL HEAD, LED, 3-FACE, 3-SECTION, BRACKET MOUNTED	EACH	1	
PEDESTRIAN SIGNAL HEAD, LED, 1-FACE, BRACKET MOUNTED WITH COUNTDOWN TIMER	EACH	2	
TRAFFIC SIGNAL BACKPLATE, LOUVERED, ALUMINUM	EACH	12	
INDUCTIVE LOOP DETECTOR	EACH	12	
LIGHT DETECTOR	EACH		4
LIGHT DETECTOR AMPLIFIER	EACH		1
PEDESTRIAN PUSH-BUTTON	EACH	2	
TEMPORARY TRAFFIC SIGNAL INSTALLATION	EACH	1	
REMOVE EXISTING TRAFFIC SIGNAL EQUIPMENT	EACH	1	
REMOVE EXISTING HANDHOLE	EACH	9	
REMOVE EXISTING CONCRETE FOUNDATION	FOOT	6	
PREFORMED DETECTOR LOOP	EACH	874	
TEMPORARY TRAFFIC SIGNAL TIMING	EACH	1	
FULL-ACTUATED CONTROLLER AND CABINET (SPECIAL)	EACH	1	
SERVICE INSTALLATION - POLE MOUNTED	EACH	1	
UNINTERRUPTABLE POWER SUPPLY	FOOT	1	
ELECTRIC CABLE IN CONDUIT, GROUNDING, NO. 6 1C	FOOT	1	
ELECTRIC CABLE IN CONDUIT NO. 20 3/C, TWISTED, SHIELDED	FOOT	852	

* 100% COST TO THE NEW LENOX FIRE PROTECTION DISTRICT

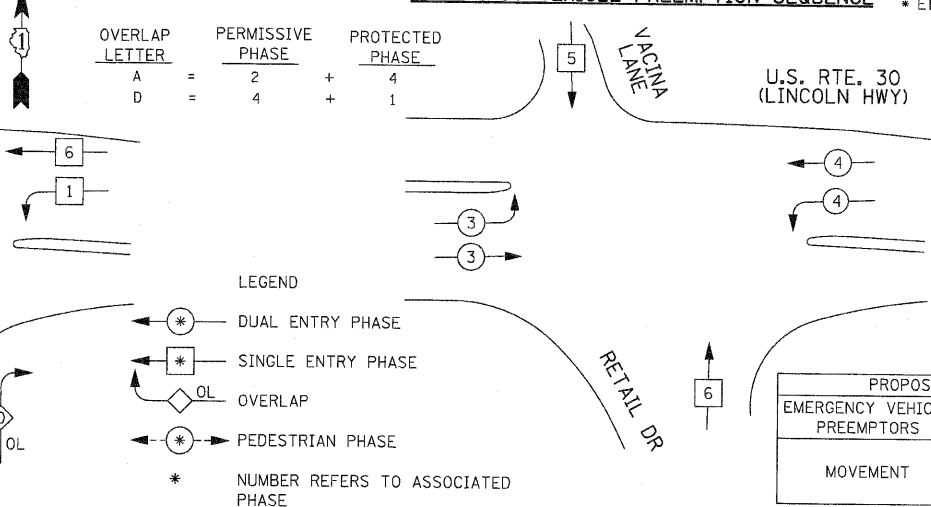


CABLE PLAN

CONTROLLER SEQUENCE



**PHASE DESIGNATION DIAGRAM
EMERGENCY VEHICLE PREEMPTION SEQUENCE**



OVERLAP LETTER	PERMISSIVE PHASE	PROTECTED PHASE
A	2	4
D	4	1

PROPOSED EMERGENCY VEHICLE PREEMPTORS				
EMERGENCY VEHICLE PREEMPTORS	3	4	5	6
MOVEMENT	↖	↗	↓	↑

I.D.O.T. TRAFFIC SIGNAL INSTALLATION ELECTRICAL SERVICE REQUIREMENTS					
TYPE	NO. LAMPS	WATTAGE (INCAND.)	WATTAGE LED	% OPERATION	TOTAL WATTAGE
SIGNAL (RED)	16		17	0.50	136
(YELLOW)	15		25	0.25	93.75
(GREEN)	15		15	0.25	56.25
ARROW	27		12	0.10	32.4
PED. SIGNAL	2		25	1.00	50
CONTROLLER ILLUM. SIGN	1		100	1.00	100
FLASHER					
ENERGY COSTS TO:				TOTAL =	468.4
ILLINOIS DEPARTMENT OF TRANSPORTATION 201 WEST CENTER COURT SCHAMBURG, ILLINOIS 60196-1096 ENERGY SUPPLY CONTACT: MARK ANDERSON PHONE: (815) 724-5988 COMPANY: COM. ED.					

RESTORATION OF WORK AREA. RESTORATION OF THE TRAFFIC SIGNAL WORK AREA SHALL BE INCIDENTAL TO THE RELATED PAY ITEM SUCH AS FOUNDATION, CONDUIT, HANDHOLE, TRENCH AND BACKFILL, ETC., AND NO EXTRA COMPENSATION SHALL BE ALLOWED. ALL ROADWAY SURFACES SUCH AS SHOULDERS, MEDIANS, SIDEWALKS, PAVEMENT, ETC. SHALL BE REPLACED IN KIND. ALL DAMAGE TO MOWED LAWNS SHALL BE REPLACED WITH AN APPROVED SOD, AND ALL DAMAGE TO UNMOWED FIELDS SHALL BE SEEDED IN ACCORDANCE WITH STANDARD SPECIFICATIONS 252 AND 250 RESPECTIVELY.

THE TRAFFIC SIGNAL CONTROL EQUIPMENT FOR THIS PROJECT SHALL BE "EAGLE" TO MATCH THE EXISTING ADJACENT SYSTEM.

REVISIONS		ILLINOIS DEPARTMENT OF TRANSPORTATION CABLE PLAN, PHASE DESIGNATION DIAGRAM, EMERGENCY VEHICLE PREEMPTION, SCHEDULE OF QUANTITIES
NAME	DATE	

US RTE. 30 AT VACINA LANE
SCALE: 1" = NTS
DATE: 10/12/2010
DRAWN BY: RG
DESIGNED BY: GB
CHECKED BY: ZH