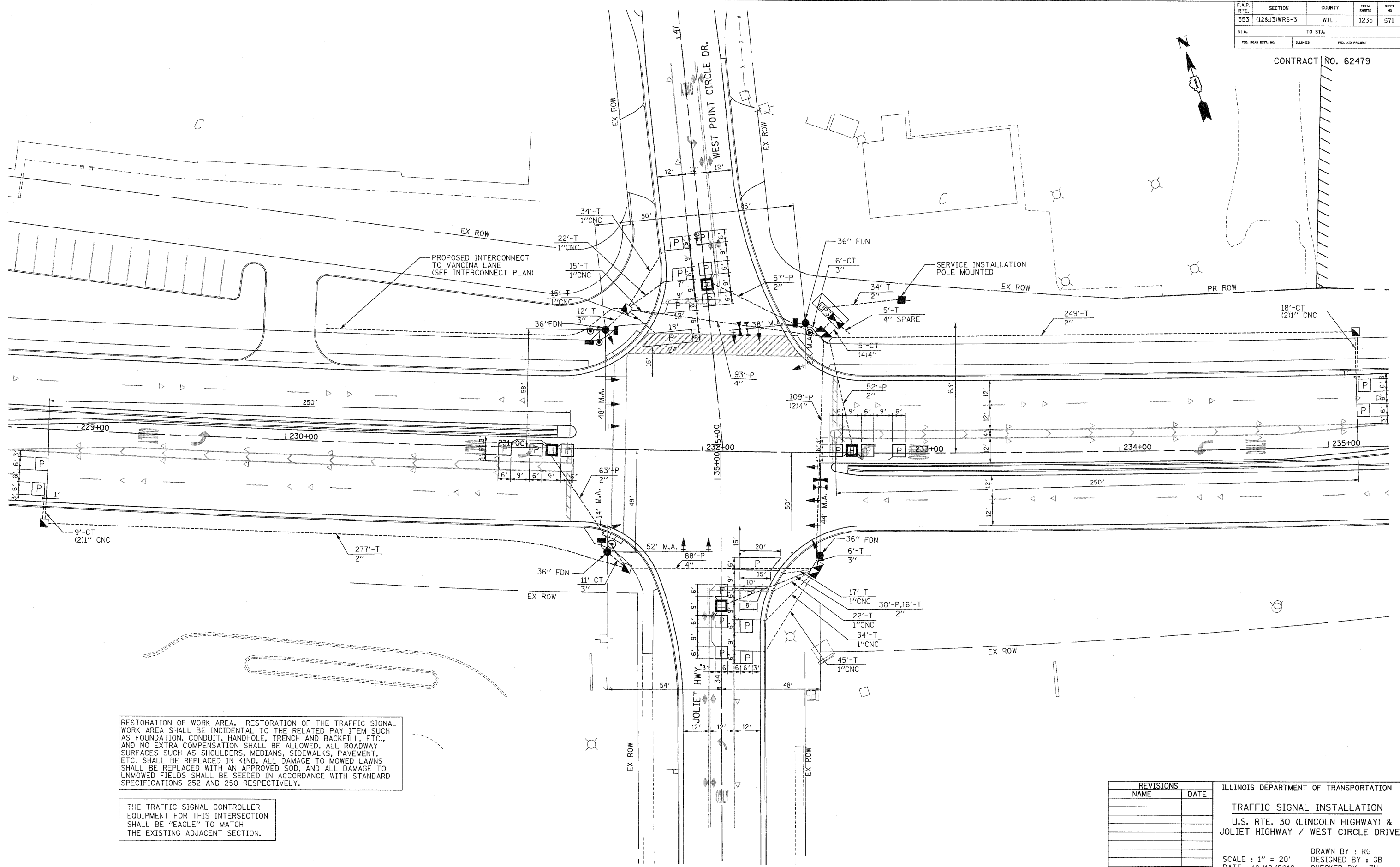


F.A.P. RTE.	SECTION	COUNTY	TOTAL SHEETS	SHEET NO
353	(12&13)WRS-3	WILL	1235	571
STA.	TO STA.			
FED. ROAD DIST. NO.	ILLINOIS	FED. AID PROJECT		

CONTRACT NO. 62479



THE TRAFFIC SIGNAL CONTROLLER EQUIPMENT FOR THIS INTERSECTION SHALL BE "EAGLE" TO MATCH THE EXISTING ADJACENT SECTION.

REVISIONS	
NAME	DATE

ILLINOIS DEPARTMENT OF TRANSPORTATION
TRAFFIC SIGNAL INSTALLATION
 U.S. RTE. 30 (LINCOLN HIGHWAY) &
 JOLIET HIGHWAY / WEST CIRCLE DRIVE
 SCALE : 1" = 20'
 DATE : 10/12/2010
 DRAWN BY : RG
 DESIGNED BY : GB
 CHECKED BY : ZH