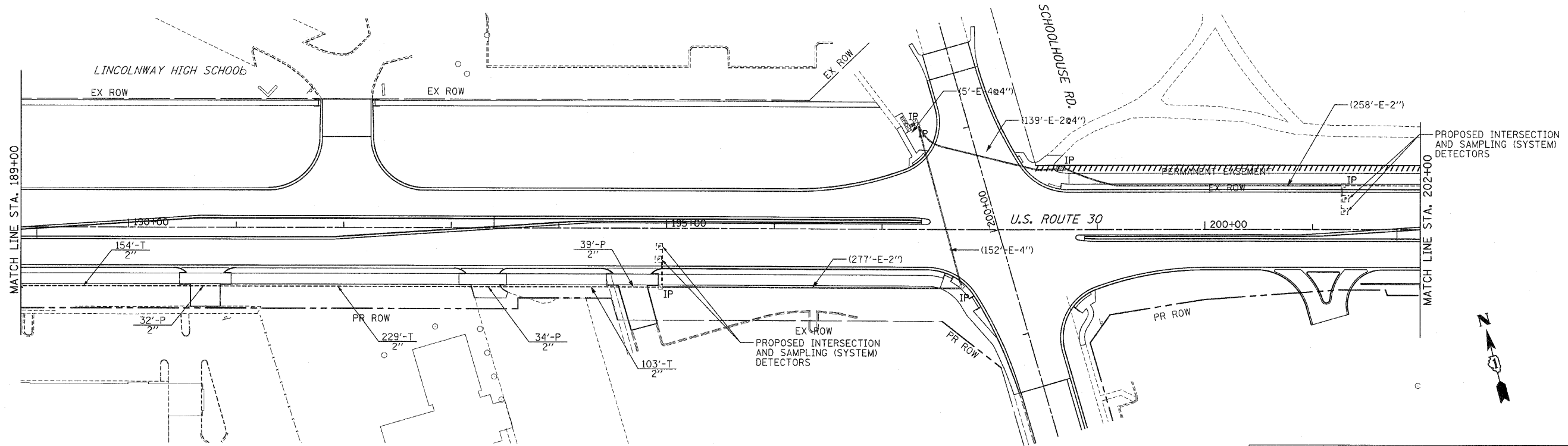
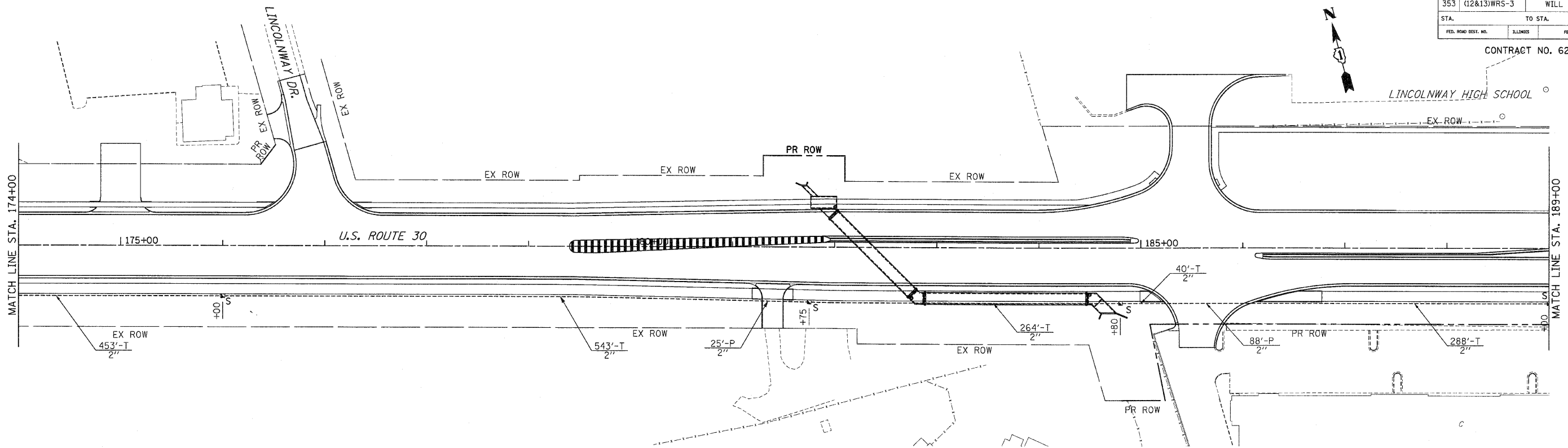


F.A.P. RTE.	SECTION	COUNTY	TOTAL SHEETS	SHEET NO.
353	(12&13)WRS-3	WILL.	1235	581
STA.	TO STA.			
FED. ROAD DIST. NO.	ILLINOIS	FED. AID PROJECT		

CONTRACT NO. 62479



NOTE:
THE TRAFFIC SIGNAL CONTROLLER EQUIPMENT FOR THIS PROJECT SHALL BE "EAGLE" TO MATCH THE EXISTING ADJACENT SYSTEM.

REVISIONS	
NAME	DATE

ILLINOIS DEPARTMENT OF TRANSPORTATION
TRAFFIC SIGNAL INTERCONNECT
U.S. RTE. 30 (LINCOLN HIGHWAY)
 STA. 174+00 TO STA. 202+00
 DRAWN BY : RG
 DESIGNED BY : GB
 CHECKED BY : ZH
 SCALE : 1" = 50'
 DATE : 10/12/2010