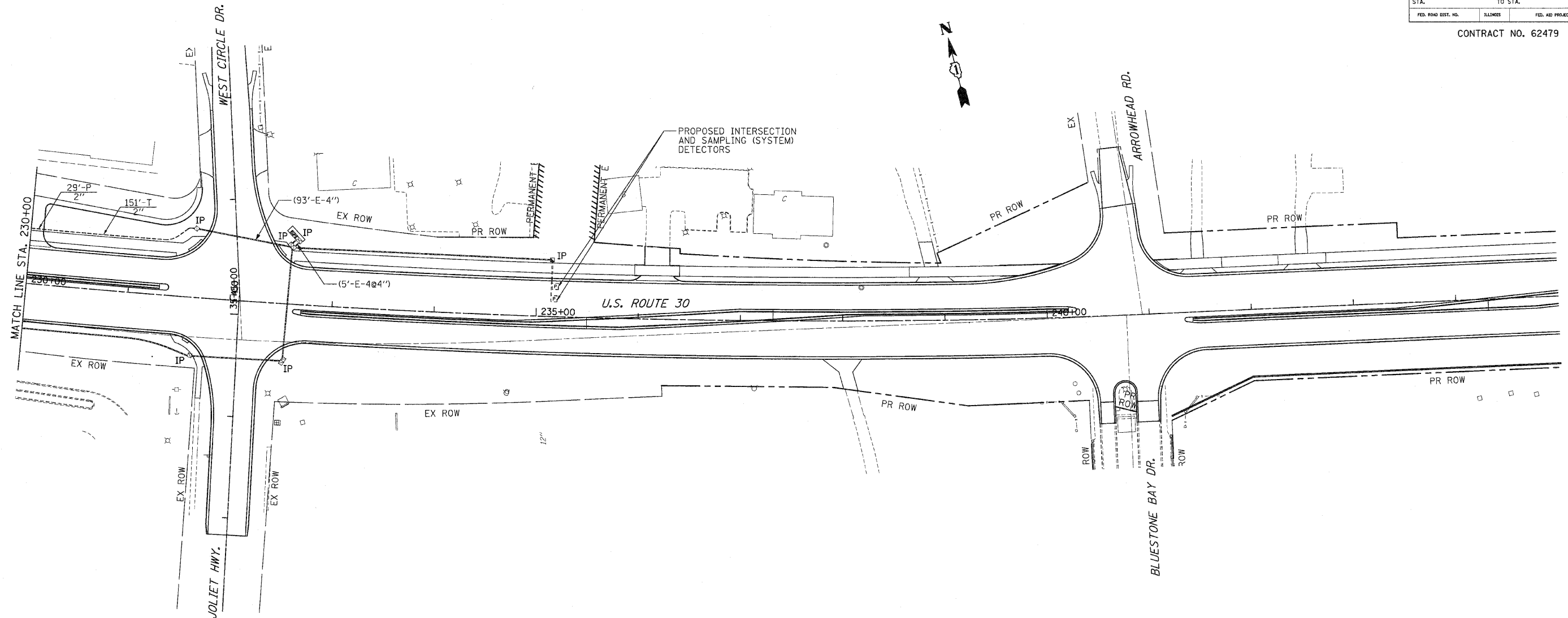


F.A.P. RTE.	SECTION	COUNTY	TOTAL SHEETS	SHEET NO.
353	(12&13)WRS-3	WILL	1235	583
STA.		TO STA.		
FED. ROAD DIST. NO.	ILLINOIS	FED. AID PROJECT		

CONTRACT NO. 62479



NOTE:
THE TRAFFIC SIGNAL CONTROLLER
EQUIPMENT FOR THIS PROJECT SHALL
BE "EAGLE" TO MATCH THE
EXISTING ADJACENT SYSTEM.

REVISIONS	
NAME	DATE

ILLINOIS DEPARTMENT OF TRANSPORTATION
TRAFFIC SIGNAL INTERCONNECT
U.S. RTE. 30 (LINCOLN HIGHWAY)
STA. 230+00 TO STA. 245+00
DRAWN BY : RG
SCALE : 1" = 50'
DATE : 10/12/2010
DESIGNED BY : GB
CHECKED BY : ZH