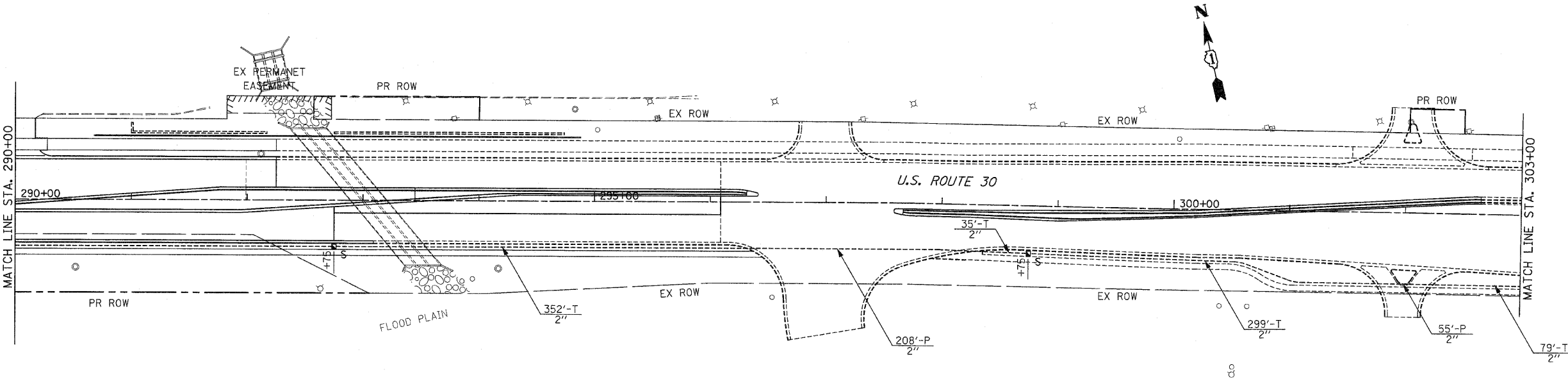
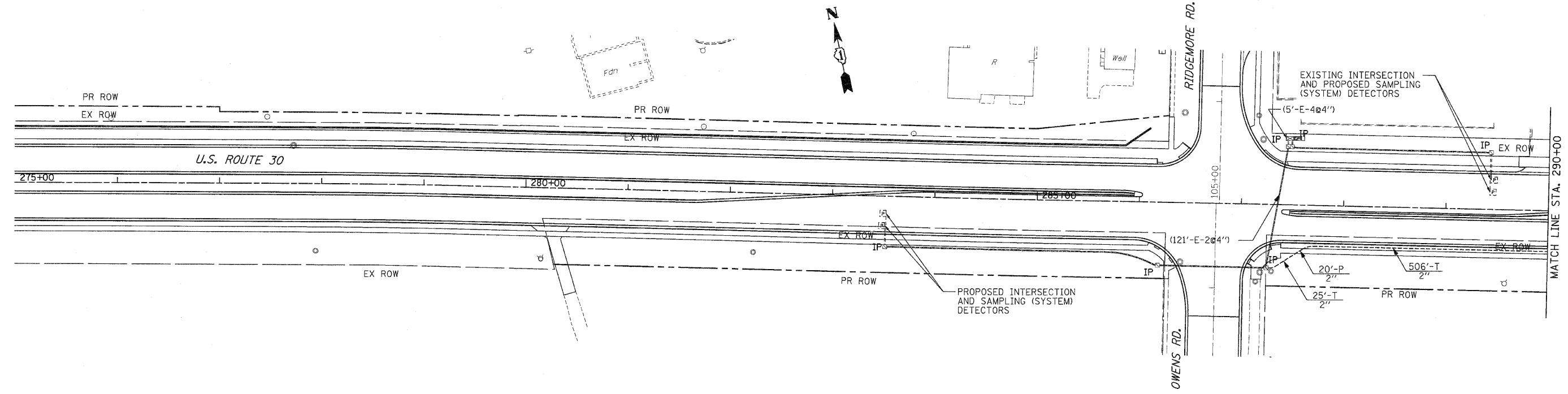


F.A.P. RTE.	SECTION	COUNTY	TOTAL SHEETS	SHEET NO.
353	(12&13)WRS-3	WILL	1235	585
STA.		TO STA.		
FED. ROAD DIST. NO.		ILLINOIS	FED. AID PROJECT	

CONTRACT NO. 62479



NOTE:
THE TRAFFIC SIGNAL CONTROLLER EQUIPMENT FOR THIS PROJECT SHALL BE "ECONOLITE" TO MATCH THE EXISTING ADJACENT SYSTEM.

REVISIONS	
NAME	DATE

ILLINOIS DEPARTMENT OF TRANSPORTATION
TRAFFIC SIGNAL INTERCONNECT
U.S. RTE. 30 (LINCOLN HIGHWAY)
 STA. 275+00 TO STA. 303+00
 SCALE : 1" = 50'
 DATE : 10/12/2010
 DRAWN BY : RG
 DESIGNED BY : GB
 CHECKED BY : ZH