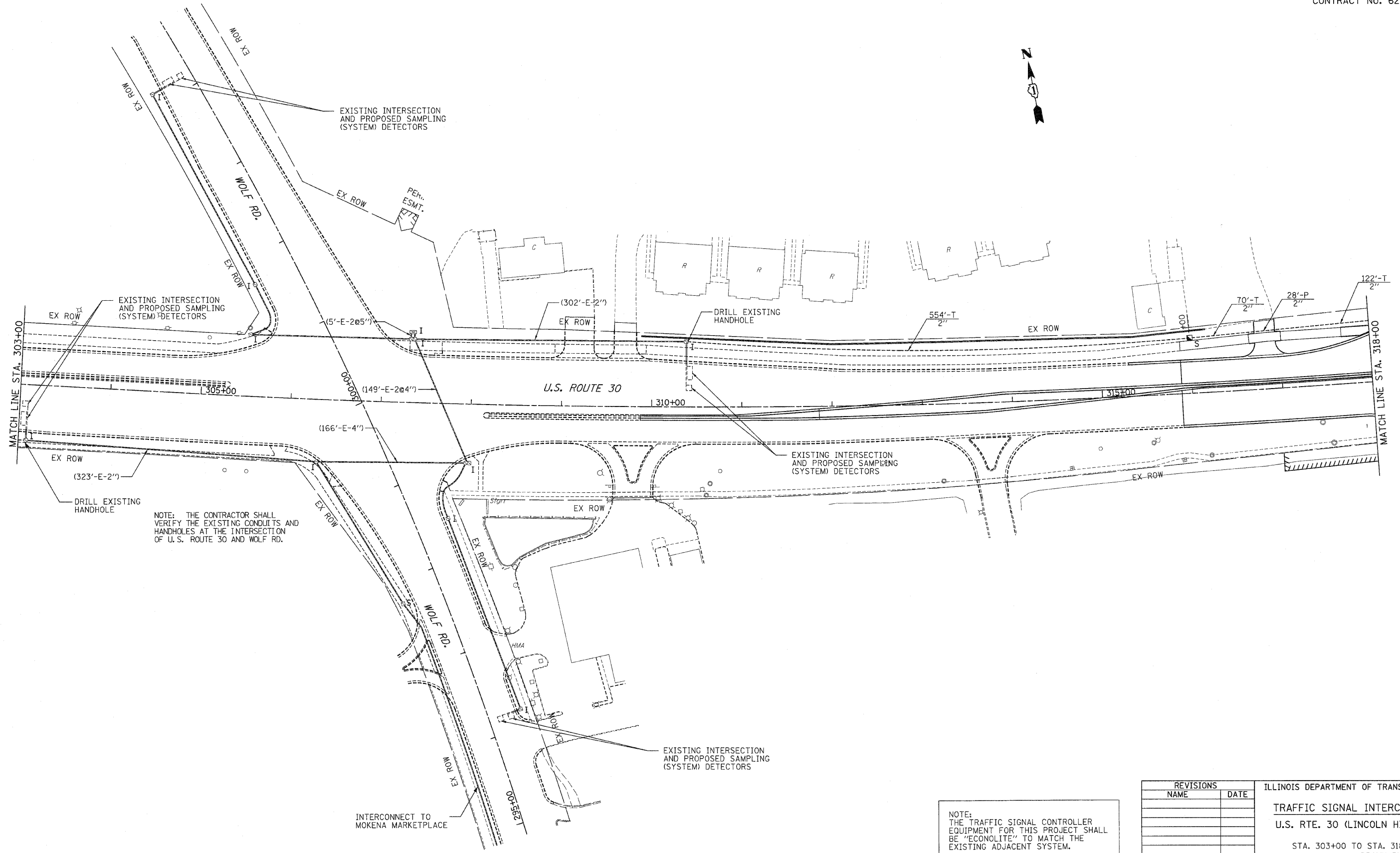


F.A.P. RYE.	SECTION	COUNTY	TOTAL SHEETS	SHEET NO.
353	(12&13)WRS-3	WILL	1235	586
STA.		TO STA.		
FED. ROAD DIST. NO.	ILLINOIS	FED. AID PROJECT		

CONTRACT NO. 62479



NOTE: THE CONTRACTOR SHALL VERIFY THE EXISTING CONDUITS AND HANDHOLES AT THE INTERSECTION OF U.S. ROUTE 30 AND WOLF RD.

NOTE: THE TRAFFIC SIGNAL CONTROLLER EQUIPMENT FOR THIS PROJECT SHALL BE "ECONOLITE" TO MATCH THE EXISTING ADJACENT SYSTEM.

REVISIONS		ILLINOIS DEPARTMENT OF TRANSPORTATION
NAME	DATE	
		TRAFFIC SIGNAL INTERCONNECT U.S. RTE. 30 (LINCOLN HIGHWAY) STA. 303+00 TO STA. 318+00 DRAWN BY : RG DESIGNED BY : GB CHECKED BY : ZH