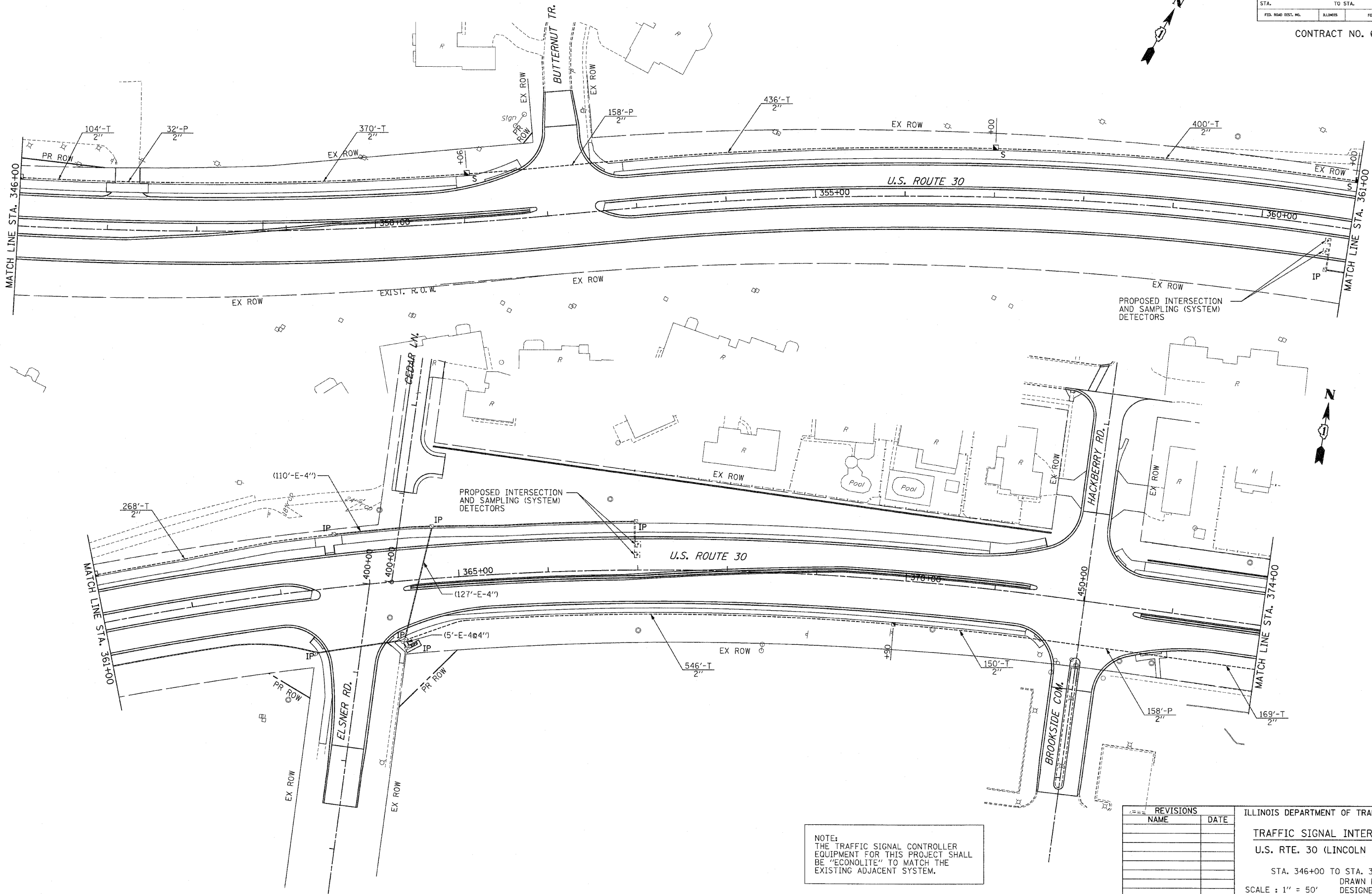


| | | | | |
|---------------------|--------------|------------------|--------------|-----------|
| F.A.P. RTE. | SECTION | COUNTY | TOTAL SHEETS | SHEET NO. |
| 353 | (12&13)WRS-3 | WILL | 1235 | 588 |
| STA. | TO STA. | | | |
| FED. ROAD DIST. NO. | BLINDS | FED. AID PROJECT | | |

CONTRACT NO. 62479



| REVISIONS | |
|-----------|------|
| NAME | DATE |
| | |
| | |
| | |
| | |
| | |
| | |
| | |

ILLINOIS DEPARTMENT OF TRANSPORTATION
TRAFFIC SIGNAL INTERCONNECT
U.S. RTE. 30 (LINCOLN HIGHWAY)
 STA. 346+00 TO STA. 374+00
 SCALE : 1" = 50'
 DATE : 10/12/2010
 DRAWN BY : RG
 DESIGNED BY : GB
 CHECKED BY : ZH

NOTE:
 THE TRAFFIC SIGNAL CONTROLLER EQUIPMENT FOR THIS PROJECT SHALL BE "ECONOLITE" TO MATCH THE EXISTING ADJACENT SYSTEM.