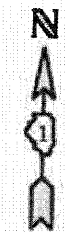
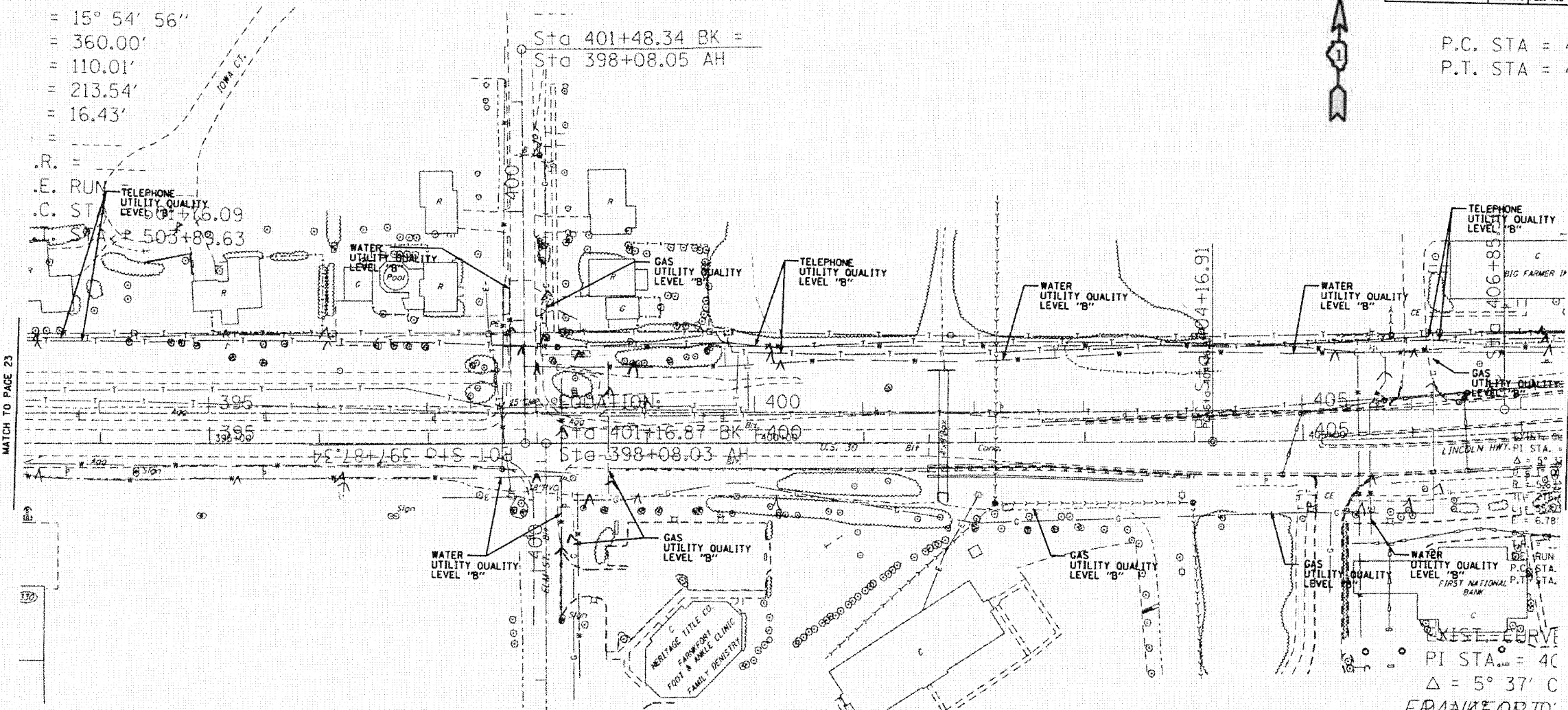


SECTION	COUNTY	TOTAL SHEETS	SHEET NO.
(12 & 13) WRS-3	WH		
STA.	TO STA.		
FED. ROAD DIST. NO.	ILLINOIS FED. AID PROJECT		



= 15° 54' 56"
= 360.00'
= 110.01'
= 213.54'
= 16.43'



—T—T—T—T—	TELEPHONE
—W—W—W—W—	WATER
—G—G—G—G—	GAS
—CTV—CTV—CTV—CTV—	CABLE TELEVISION
—FO—FO—FO—FO—	FIBER OPTIC
—E—E—E—E—	ELECTRIC

TBE GROUP, INC.
CIVIL ENGINEERING * TRANSPORTATION * ENVIRONMENTAL
PLANNING * UTILITY ENGINEERING/LOCATING

IL09500213, 222, 233
Checked by: *[Signature]*
PAGE 24 OF 25
Utility Quality Level "B" : Designating

Utility shown on these plans as depicted in the legend have been investigated by TBE Group, Inc in accordance with SUE Industry Standards. All other information shown has been provided to TBE Group, Inc by others. TBE's SUE field investigation was performed during the period 10-13-04 through 04-21-05. Changes to utilities after these dates may have been made and therefore may result in variances from this plan. Consideration should be given to updating this plan if deemed advisable prior to final design and construction.

The SBC locations depicted have been obtained through the application of geophysical methods to determine the existence and approximate horizontal position of these facilities. However, SBC will not provide TBE Group, Inc with utility records nor allow access to their field closures (pedestals/manholes etc.) to help verify the locations of their existing underground facilities. Therefore, TBE is unable to verify the completeness of the SBC locations depicted in accordance with the CI/ASCE Standard 38-02.



205 W. WACKER DRIVE
SUITE 1020
CHICAGO, IL 60606
(312) 704-1970

REVISIONS	
NAME	DATE

ILLINOIS DEPARTMENT OF TRANSPORTATION
US RT. 30 from William Street to Wolf
Road and US RT. 30 from Wolf Road to US
RT. 45 in Frankfort, Illinois-
Will County
Contract No: 62479
Section No.: (12 & 13) WRS-4

DRAWN BY - KLC
SCALE : 1" = 50'