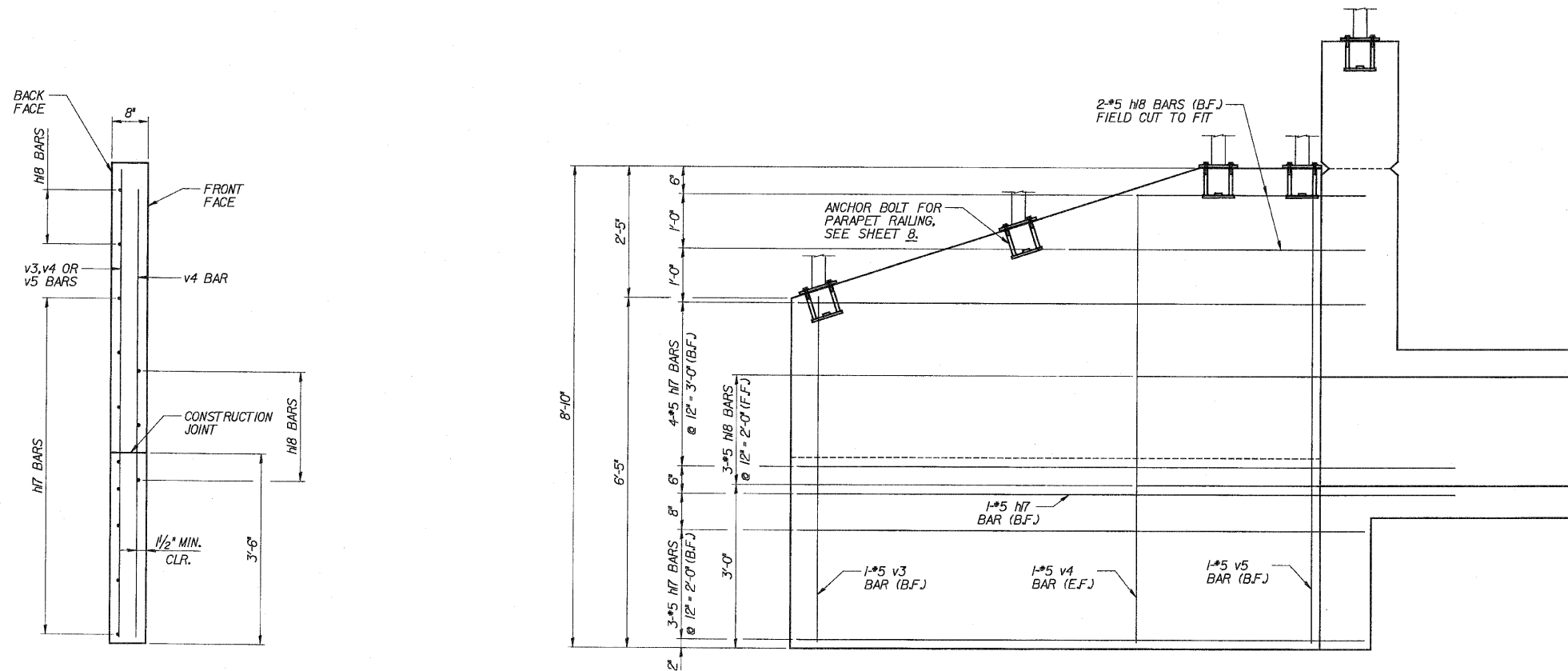


**WING A & B PLAN**



**WING A & B ELEVATION**

**WING A & B TYPICAL SECTION**

DESIGNED	ASP
CHECKED	CDS
DRAWN	BEM
CHECKED	ASP

**LEGEND**

B.F. - BACK FACE  
F.F. - FRONT FACE  
E.F. - EACH FACE

REVISIONS	
NAME	DATE

**DLZ** 85 W. Algonquin Rd. Ste. 220  
Arlington Heights IL 60005  
DLZ Illinois, Inc.

**CULVERT 'B'**  
**WINGS A & B**  
U.S. ROUTE 30 (LINCOLN HIGHWAY)  
F.A.P. 353 (U.S. 30)  
SECTION (12 & 13) WRS-3  
STATION 158+00.00  
WILL COUNTY  
STRUCTURE NUMBER 099-C011