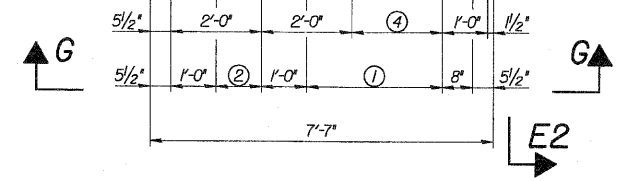
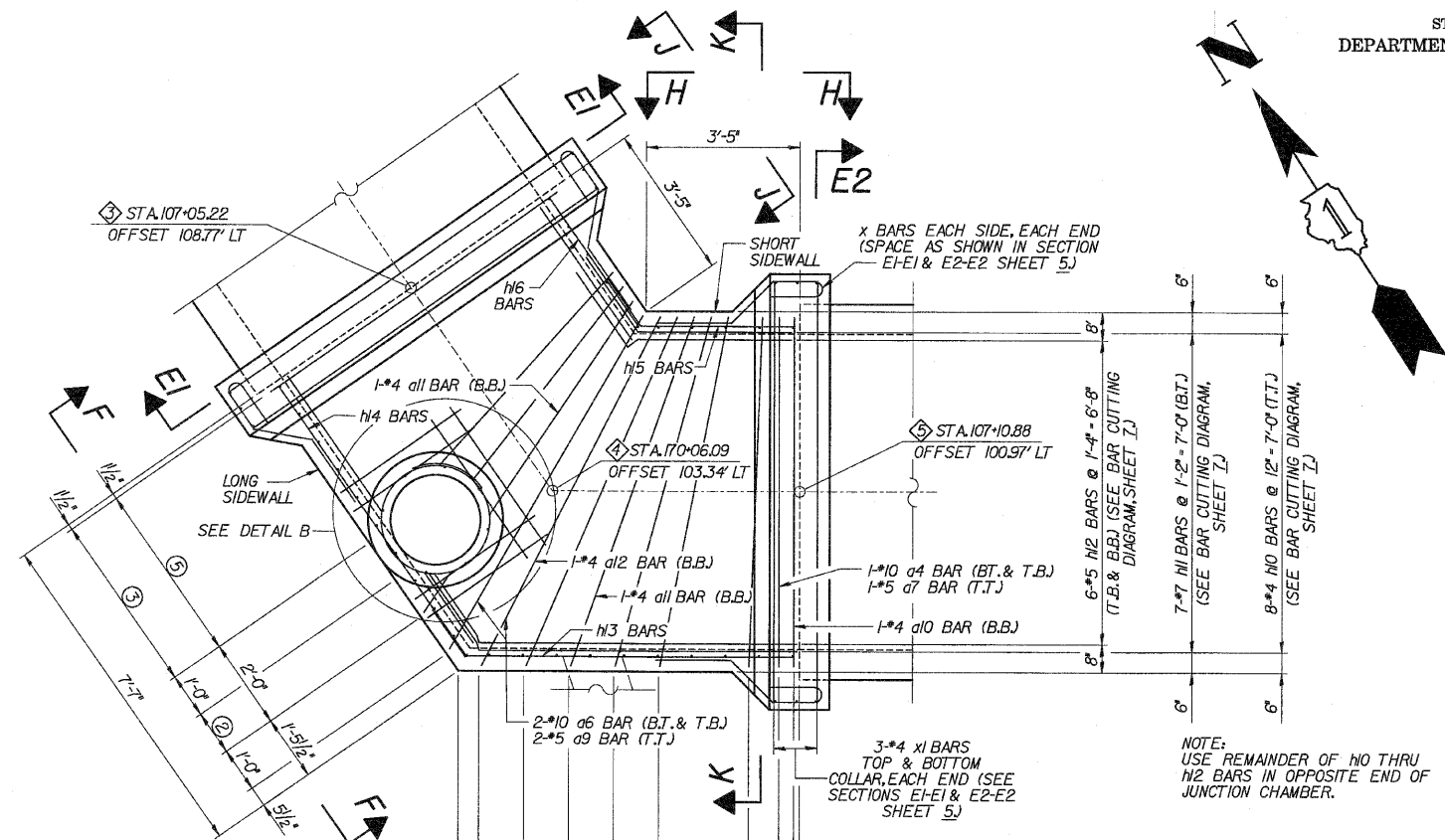


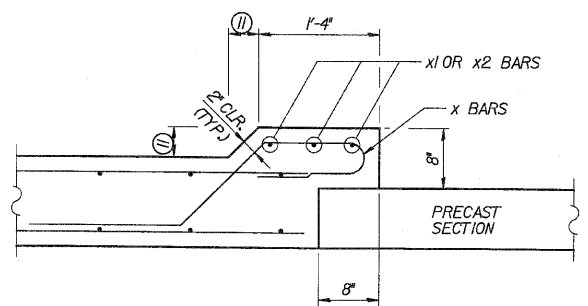
ROUTE NO.	SECTION	COUNTY	TOTAL SHEETS	SHEET NO.
FAP 353	*	WILL	1235	632
FED. ROAD DIST.		ILLINOIS	FED. AID PROJECT	
* SECT. 12 & 13 WRS-3 * CONTRACT NO. 62479				



PLAN

- ① 4\*10 d4 BARS @ 12'-3'-0" (B.T. & T.B.)  
4\*5 d7 BARS @ 12'-3'-0" (T.T.)
- ② 2\*10 d5 BARS @ 12'-1'-0" (B.T. & T.B.)  
2\*5 d8 BARS @ 12'-1'-0" (T.T.)
- ③ 5\*10 d4 BARS @ 12'-4'-0" (B.T. & T.B.)  
5\*5 d7 BARS @ 12'-4'-0" (T.T.)
- ④ 2\*4 d10 BARS @ 2'-0" - 2'-0" (B.B.)
- ⑤ 3\*4 d10 BARS @ 2'-0" - 4'-0" (B.B.)
- ⑥ 5\*4 v3 BARS @ 9'-3'-0" (SHORT SIDEWALL)
- ⑦ 5\*5 N3 BARS @ 12'-4'-0" (LONG SIDEWALL)
- ⑧ 5\*5 N4 BARS @ 12'-4'-0" (LONG SIDEWALL)
- ⑨ 5\*5 N5 BARS @ 12'-4'-0" (SHORT SIDEWALL)
- ⑩ 5\*5 N6 BARS @ 12'-4'-0" (SHORT SIDEWALL)

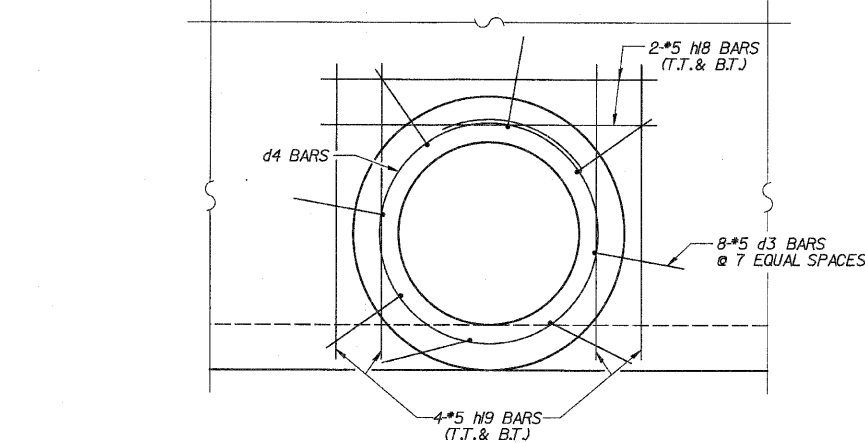
NOTE:  
FIELD CUT d4,d5,d7,d8,N0 & N1 BARS  
TO FIT AROUND OPENING FOR FRAME  
& LID, WHEN NECESSARY.



PRECAST TO CAST-IN-PLACE  
CONNECTION COLLAR

⑪ TOP SLAB - 4"  
BOTTOM SLAB - 3"  
SIDEWALLS - 10"

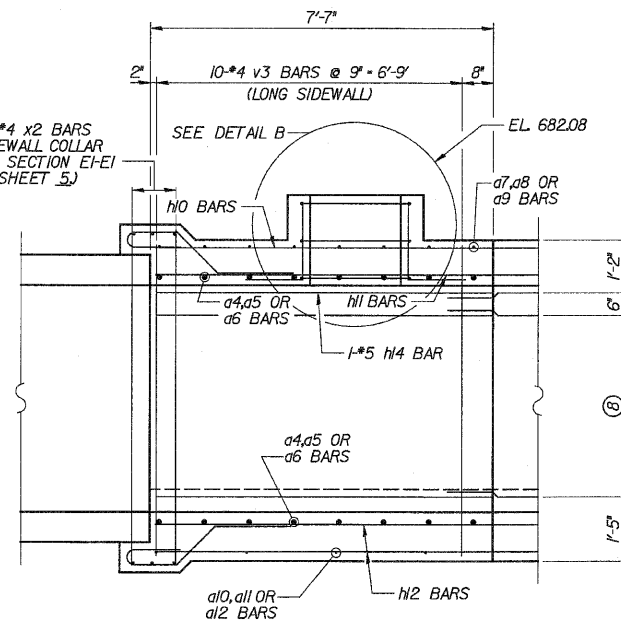
DESIGNED	ASP
CHECKED	CDS
DRAWN	BEM
CHECKED	ASP



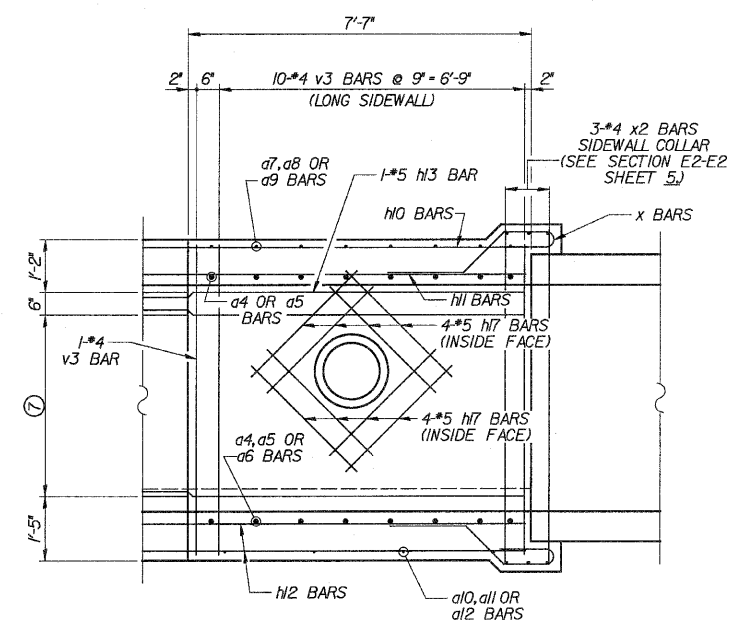
DETAIL B

MIN. BAR LAPS  
\*4 BARS - 1'-0"  
\*5 BARS - 1'-3"  
\*7 BARS - 2'-0"

LEGEND  
T.T. - TOP OF TOP SLAB  
B.T. - BOTTOM OF TOP SLAB  
T.B. - TOP OF BOTTOM SLAB  
B.B. - BOTTOM OF BOTTOM SLAB

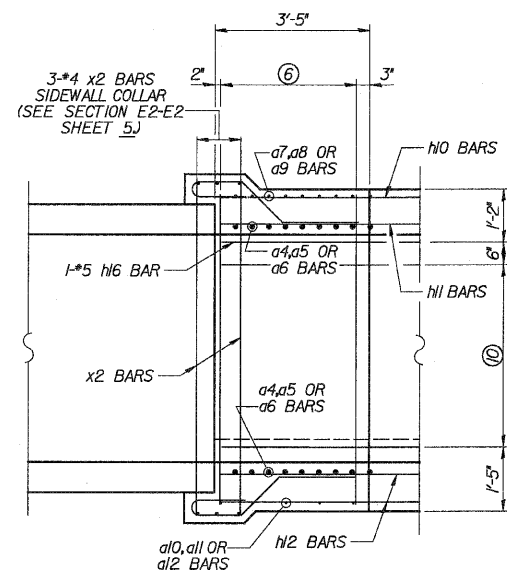


VIEW F-F

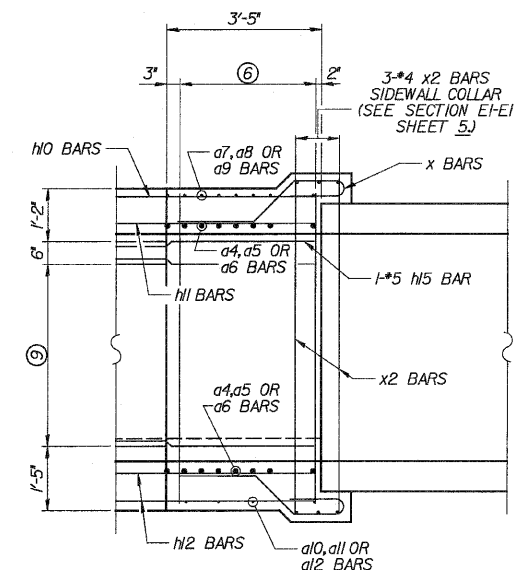


VIEW G-G

NOTE:  
FIELD CUT v3 & N3 BARS AROUND  
OPENING FOR PIPE, WHEN NECESSARY



VIEW H-H



VIEW J-J

DLZ 85 W. ALGONQUIN RD. STE. 220  
ARLINGTON HEIGHTS, IL 60005

**CULVERT 'C'**  
**JUNCTION CHAMBER I PLAN & ELEV.**  
U.S. ROUTE 30 (LINCOLN HIGHWAY)  
F.A.P. 353 (U.S. 30)  
SECTION (12 & 13) WRS-3  
STATION 170+61.58, 76.55' LT.  
WILL COUNTY  
STRUCTURE NUMBER 099-C012

REVISIONS	
NAME	DATE