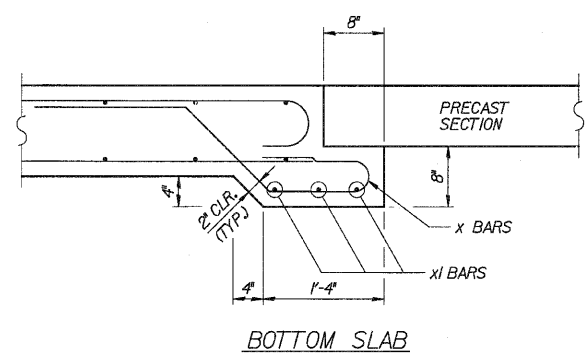


- ① 2-#4 d2 BARS @ 2'-2" = 2'-2" (B.B.)
- ② 5-#6 h BARS @ 12" = 4'-0" (B.T.)
2-#6 h BARS (T.T.) (PLACE AS SHOWN IN SECTION D-D)
- ③ 2-#4 #8 BARS @ 12" = 1'-0" (T.B. & B.B.)

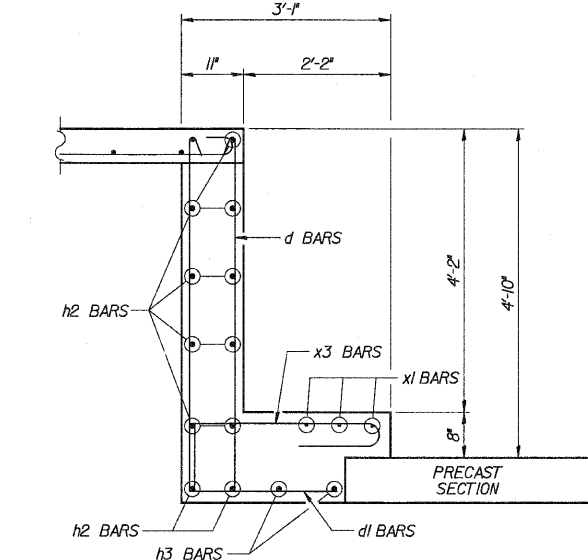
NOTE:
TILT 'a' BARS IN TOP SLAB TO PROVIDE REQUIRED CLEARANCE

PLAN

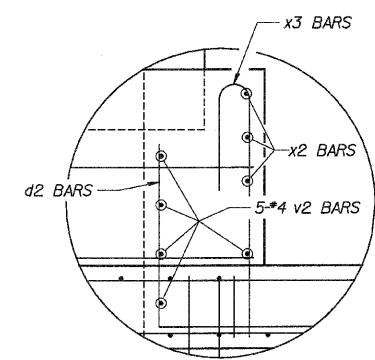
NOTE:
FIELD CUT 'a' BARS AND 'h' BARS TO FIT AROUND OPENING FOR FRAME AND LID, WHEN NECESSARY.



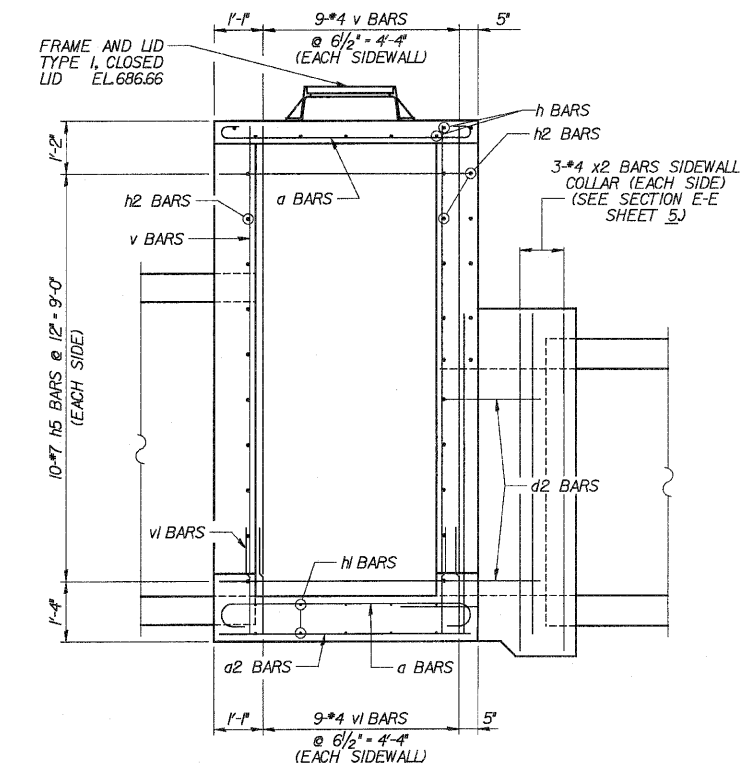
DETAIL A
(EACH SIDE OF COLLAR)



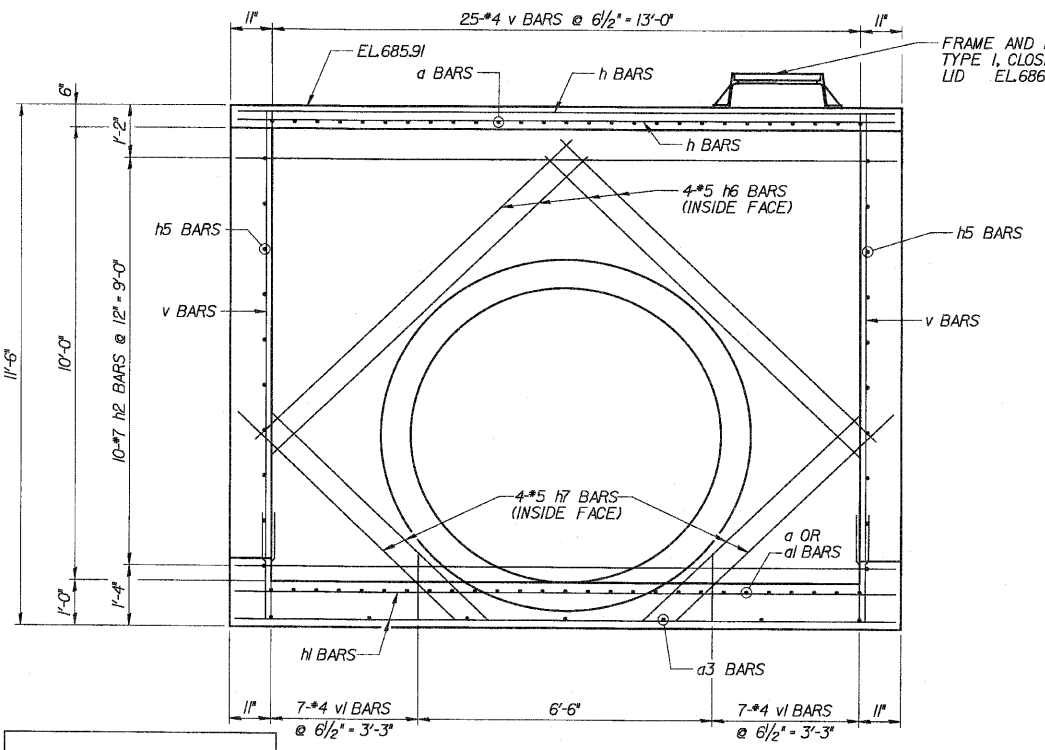
PRECAST TO CAST-IN-PLACE CONNECTION COLLAR



DETAIL A
(EACH SIDE OF COLLAR)

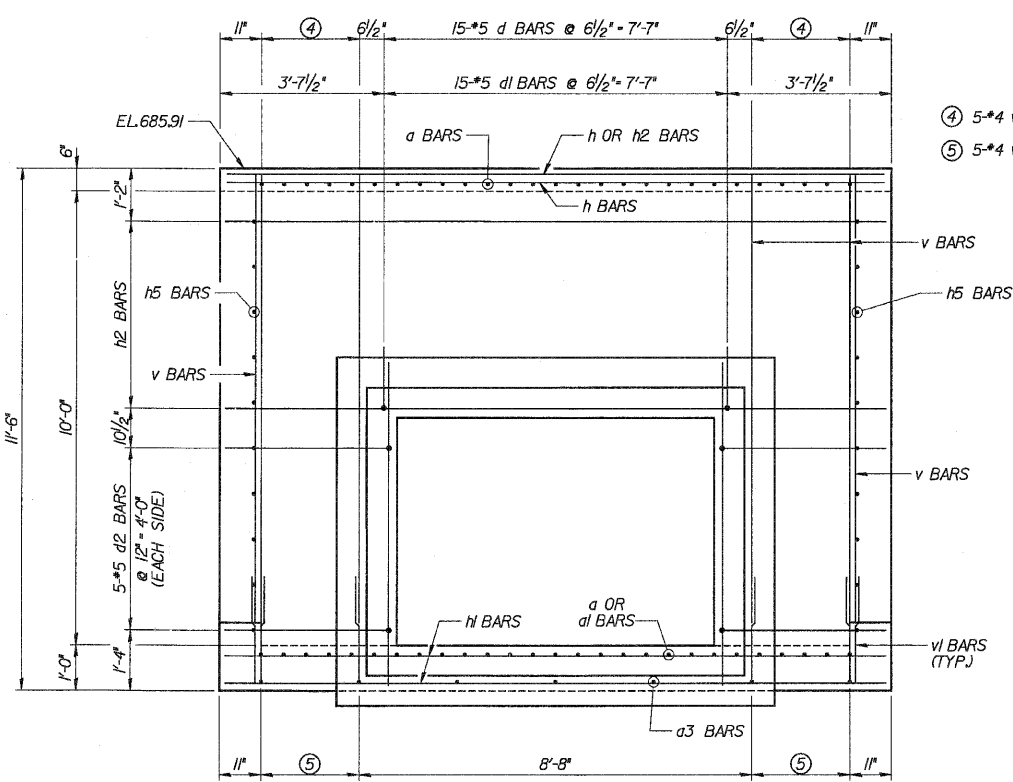


VIEW C-C

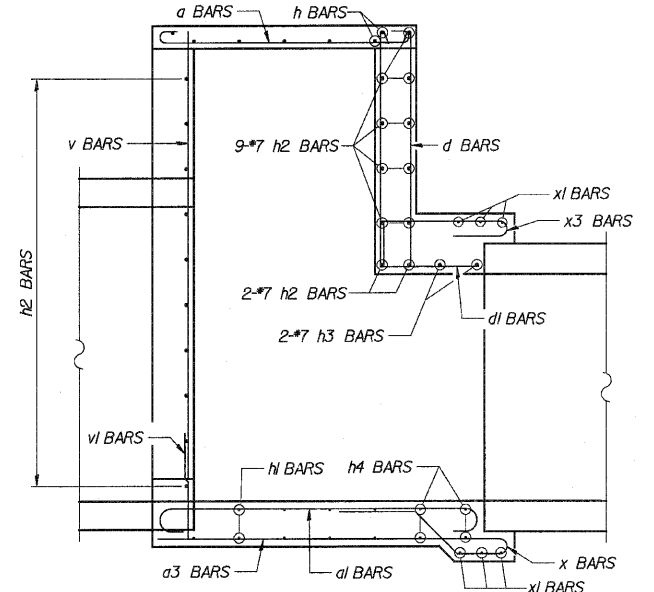


VIEW A-A

NOTE:
FIELD CUT #2, v & v1 BARS TO FIT AROUND OPENING FOR PIPE, WHEN NECESSARY.



VIEW B-B



SECTION D-D

DESIGNED	ASP
CHECKED	CDS
DRAWN	BEM
CHECKED	ASP

LEGEND

T.T. - TOP OF TOP SLAB
B.T. - BOTTOM OF TOP SLAB
T.B. - TOP OF BOTTOM SLAB
B.B. - BOTTOM OF BOTTOM SLAB

REVISIONS	
NAME	DATE

DLZ 85 W. Algonquin Rd. Ste. 220
Arlington Heights IL 60005

CULVERT 'C'
JUNCTION CHAMBER 2 PLAN & ELEV.
U.S. ROUTE 30 (LINCOLN HIGHWAY)
F.A.P. 353 (U.S. 30)
SECTION (12 & 13) WRS-3
STATION 170+61.58, 76.55' LT.
WILL COUNTY
STRUCTURE NUMBER 099-C012