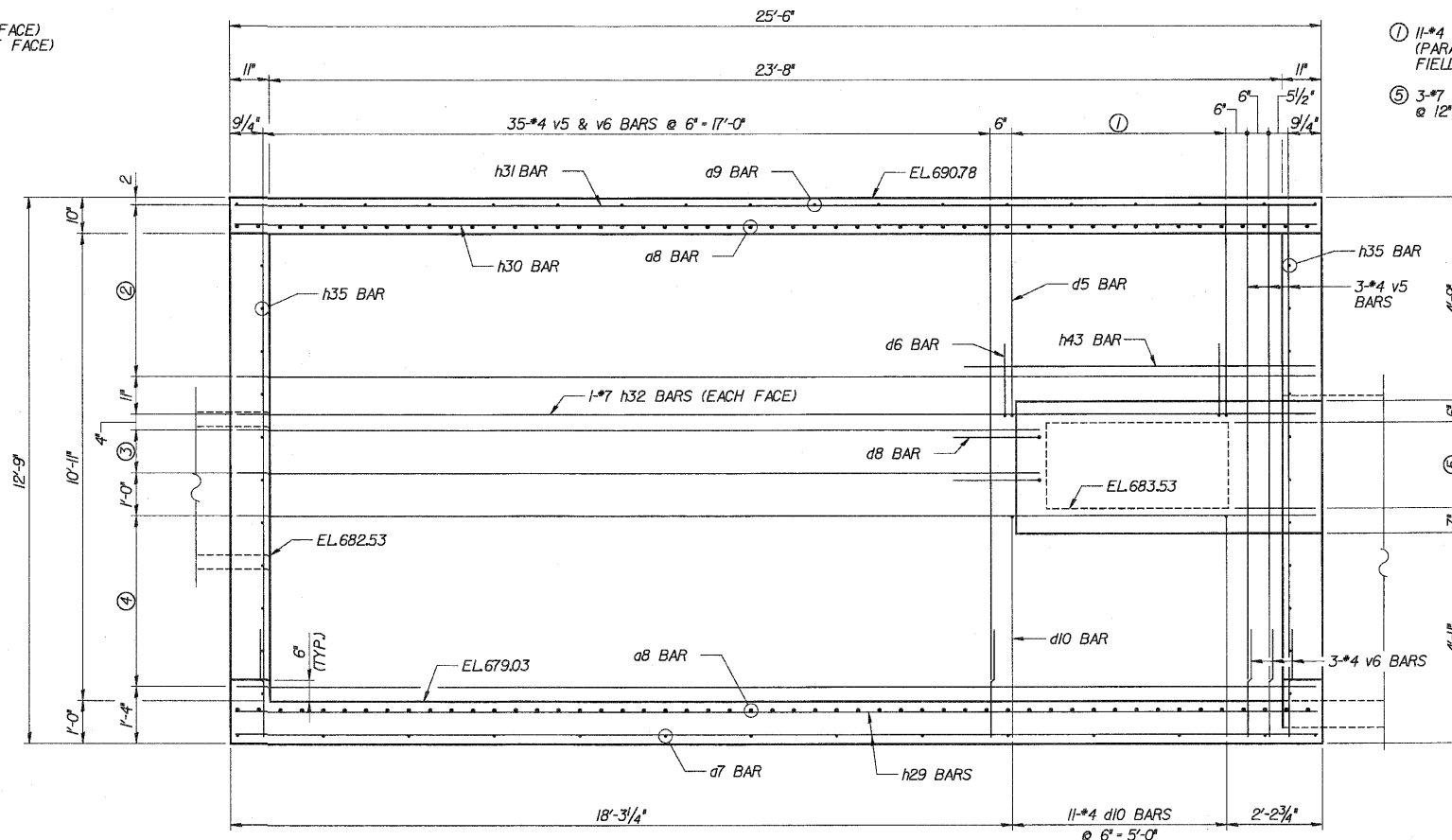
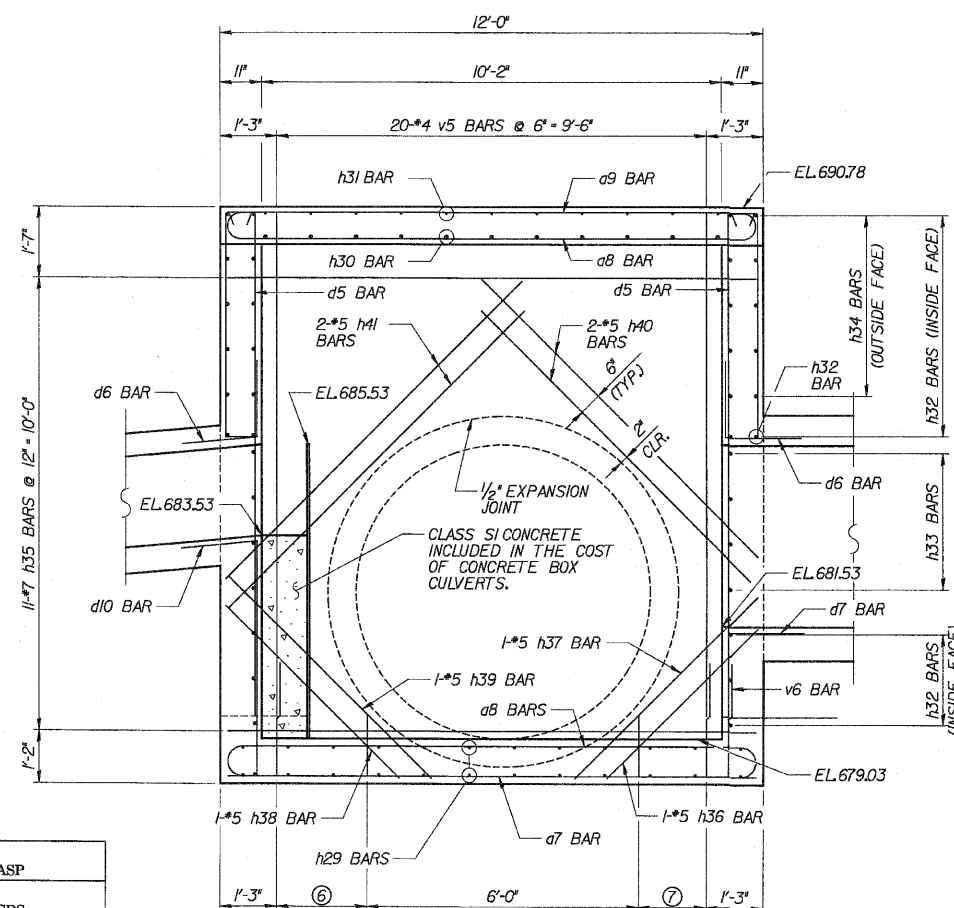


- ② 5-#7 h32 BARS @ 12" - 4'-0" (INSIDE FACE)
- 5-#4 h43 BARS @ 12" - 4'-0" (OUTSIDE FACE)
- ③ 2-#7 h44 & d8 BARS @ 12" - 1'-0"
- ④ 5-#7 h32 BARS @ 12" - 4'-0"

- ① 11-#4 d5 & d6 BARS @ 6" - 5'-0" (PARALLEL TO C OF CULVERT) FIELD BEND d6 BARS TO FIT
- ⑤ 3-#7 d9 & d11 BARS @ 12" - 2'-0"

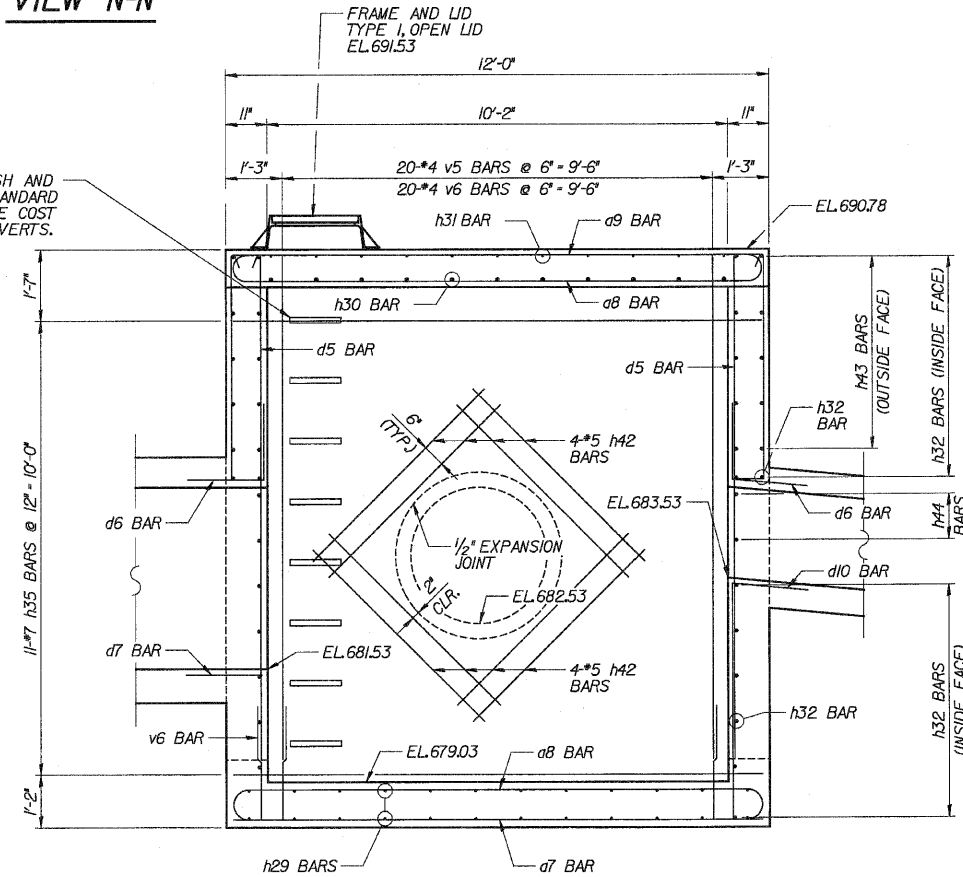


VIEW N-N



VIEW P-P

CONTRACTOR TO FURNISH AND INSTALL RUNGS. SEE STANDARD 602TOL. INCLUDED IN THE COST OF CONCRETE BOX CULVERTS.



VIEW R-R

NOTE:
FIELD CUT h29, h35, v5 & v6 BARS, WHEN NECESSARY, TO FIT AROUND OPENINGS FOR PIPES.

LEGEND

- T.T. = TOP OF TOP SLAB
- B.T. = BOTTOM OF TOP SLAB
- T.B. = TOP OF BOTTOM SLAB
- B.B. = BOTTOM OF BOTTOM SLAB

DESIGNED	ASP
CHECKED	CDS
DRAWN	BEM
CHECKED	ASP

- ⑥ 5-#4 v6 BARS @ 6" - 2'-0"
- ⑦ 4-#4 v6 BARS @ 6" - 1'-6"

REVISIONS	
NAME	DATE

DLZ 85 W. Algonquin Rd. Ste. 220
Arlington Heights IL 60005
DLZ Illinois, Inc.

CULVERT 'J'
JUNCTION CHAMBER I DETAILS
U.S. ROUTE 30 (LINCOLN HIGHWAY)
F.A.P. 353 (U.S. 30)
SECTION (12 & 13) WRS-3
STATION 182+31.00
WILL COUNTY
STRUCTURE NUMBER 099-C013