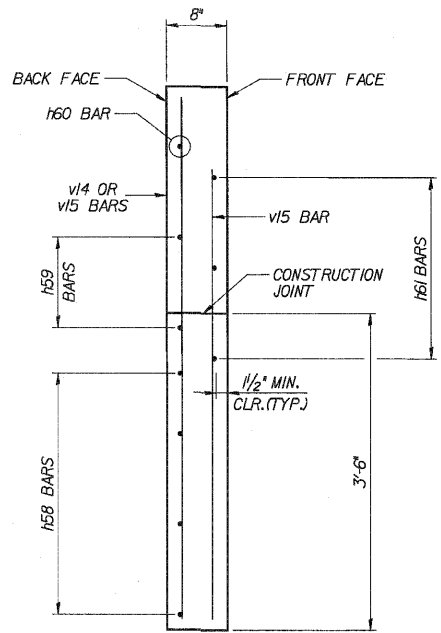
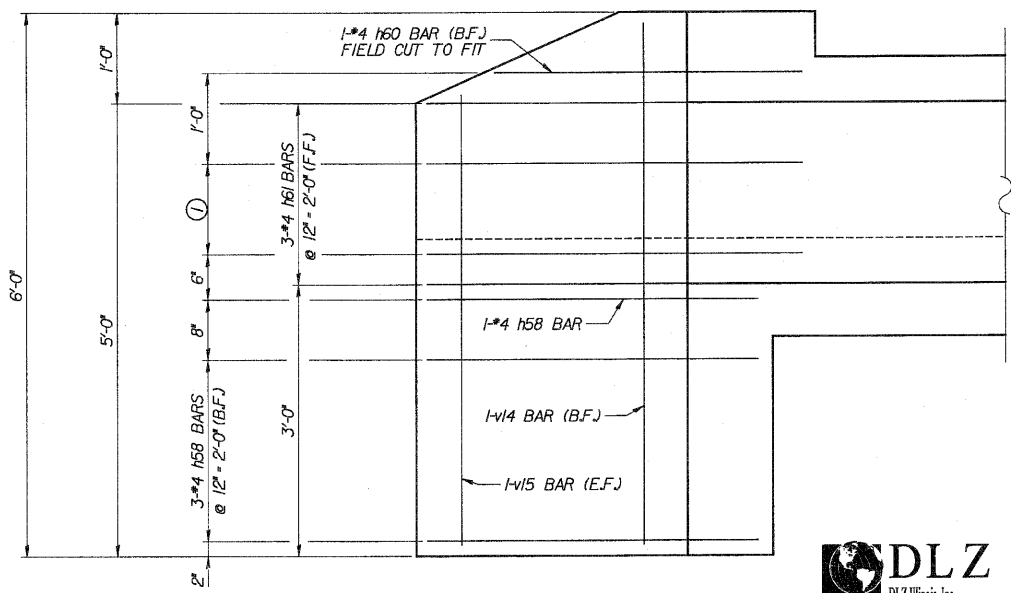


**WING B PLAN**



**WING B TYPICAL SECTION**



**WING B ELEVATION**

① 2-#4 h59 BARS @ 12'-1'-0" (B.F.)

**LEGEND**

B.F. - BACK FACE  
F.F. - FRONT FACE  
E.F. - EACH FACE

DESIGNED	ASP
CHECKED	CDS
DRAWN	BEM
CHECKED	ASP

REVISIONS	
NAME	DATE

**DLZ** 85 W. Algonquin Rd. Ste. 220  
Arlington Heights IL 60005  
DLZ Illinois, Inc.

**CULVERT 'J'**  
**WING B**  
U.S. ROUTE 30 (LINCOLN HIGHWAY)  
F.A.P. 353 (U.S. 30)  
SECTION 12 & 13 WRS-3  
STATION 182+31.00  
WILL COUNTY  
STRUCTURE NUMBER 099-C013