

BENCH MARK: BM 214
 STA. 208+46.38, 31.5' LT. ELEV. 734.63
 SET RAILROAD SPIKE IN SOUTH FACE OF
 SEVENTH POWER POLE EAST OF SCHOOLHOUSE
 ROAD, NORTH SIDE OF ROUTE 30.

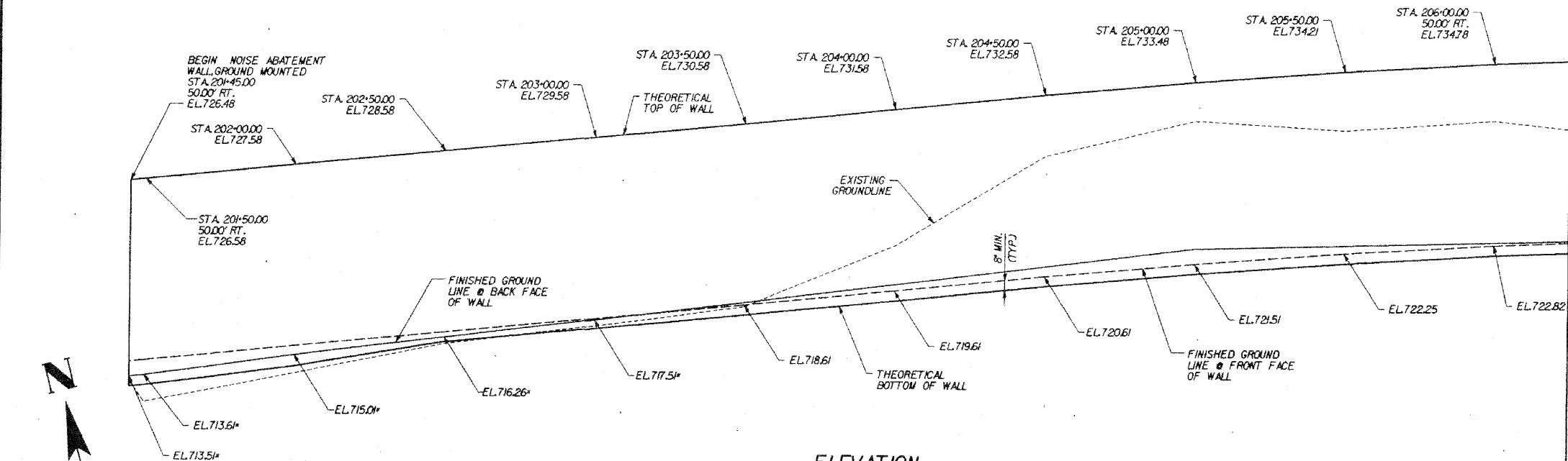
EXISTING STRUCTURE: NONE

STATE OF ILLINOIS
 DEPARTMENT OF TRANSPORTATION

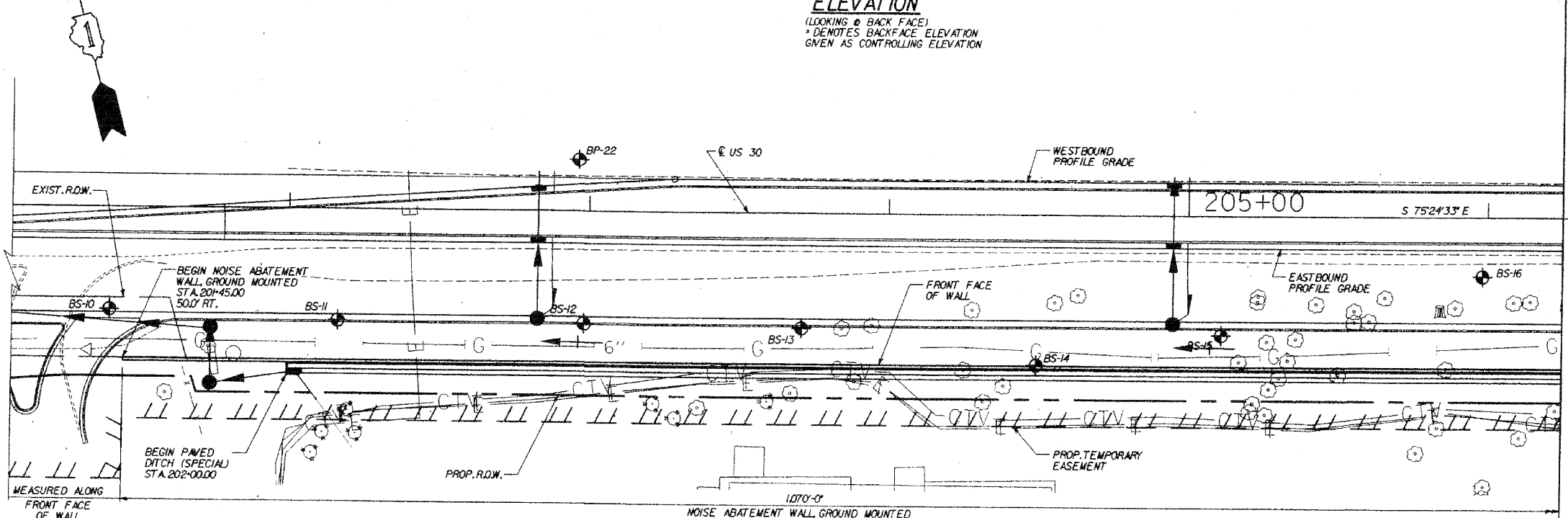
ROUTE NO.	SECTION	COUNTY	TOTAL SHEETS	SHEET NO.
FAP 353	*	WILL	1235	727
FED. ROAD DIST.	ILLINOIS	FED. AID PROJECT		

* SECT. 12 & 13 WRS-3
 * CONTRACT NO. 8479

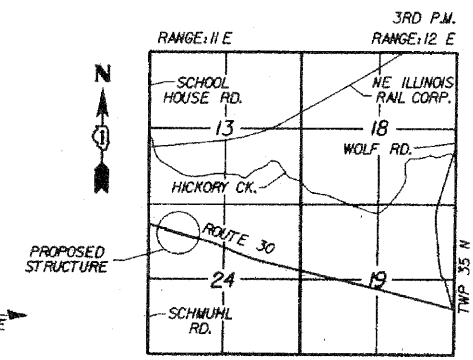
SHEET NO. 1
 11 SHEETS



TOTAL BILL OF MATERIAL		
ITEM	UNIT	QUANTITY
PAVED DITCH (SPECIAL)	FOOT	950
NOISE ABATEMENT WALL GROUND MOUNTED	SQ. FT.	13,742



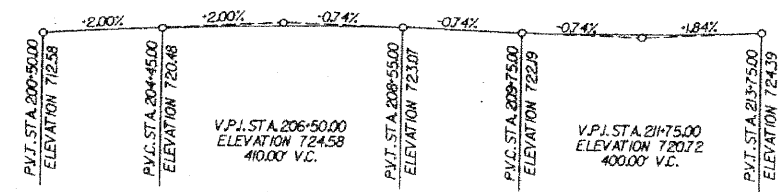
MATCH LINE STA. 206+25



Wayne A. Trix
 April 11-20-10

NOTE:
 STATIONS AND OFFSETS ARE
 FROM US 30 TO THE FRONT
 FACE OF WALL.

DESIGN SPECIFICATIONS
 2002 AASHTO SPECIFICATIONS FOR HIGHWAY BRIDGES



DESIGNED	WSP
CHECKED	ASP
DRAWN	BGC
CHECKED	WBP

REVISIONS	
NAME	DATE

DLZ 85 W. Algonquin Rd. Ste. 220
 Arlington Heights IL 60005

**NOISE WALL A
 GENERAL PLAN I**
 U.S. ROUTE 30 (LINCOLN HIGHWAY)
 F.A.P. 353 (U.S. 30)
 SECTION 12 & 13 WRS-3
 STATION 201+45.00 TO 212+15.00
 WILL COUNTY