

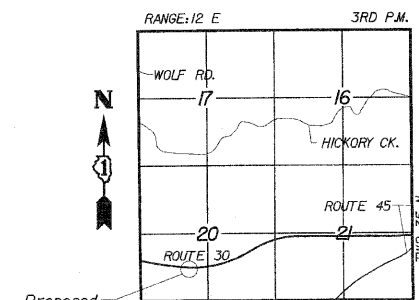
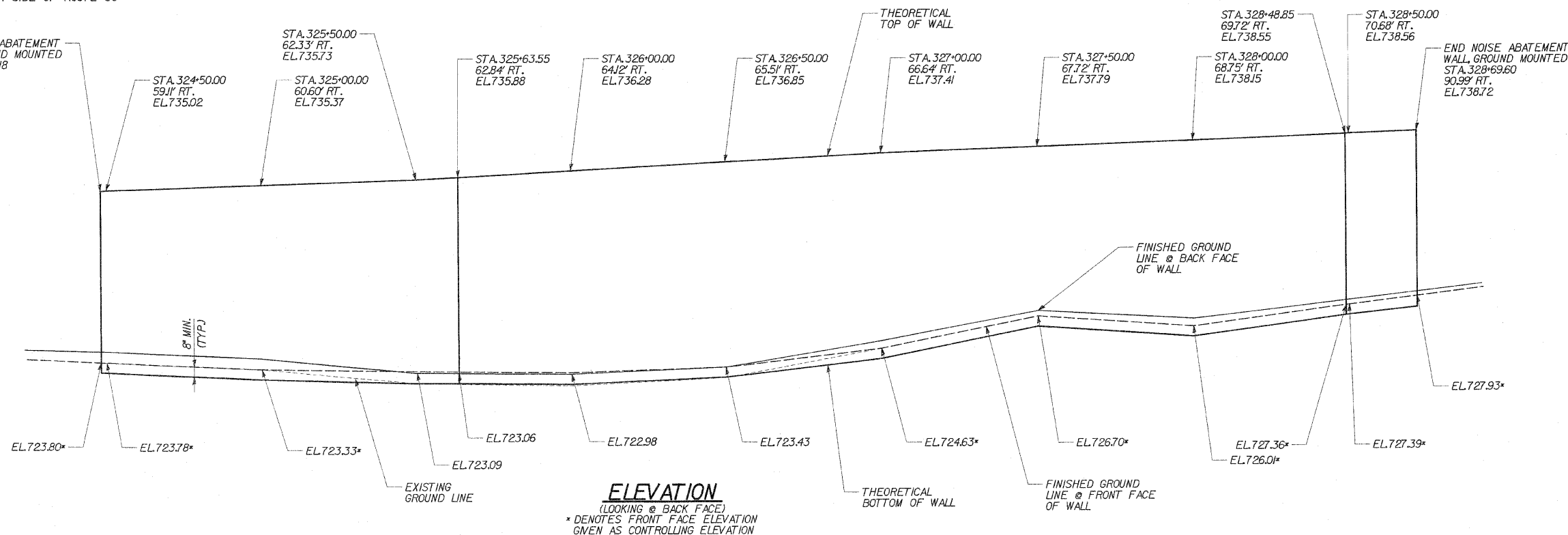
BENCH MARK: BM 233  
 STA. 332+19.643, 68.368' LT., ELEV. 725.377  
 SET RAILROAD SPIKE IN SOUTH FACE OF  
 POWER POLE OPPOSITE 'ABE LINCOLN MOTEL'  
 ENTRANCE, NORTH SIDE OF ROUTE 30

STATE OF ILLINOIS  
 DEPARTMENT OF TRANSPORTATION

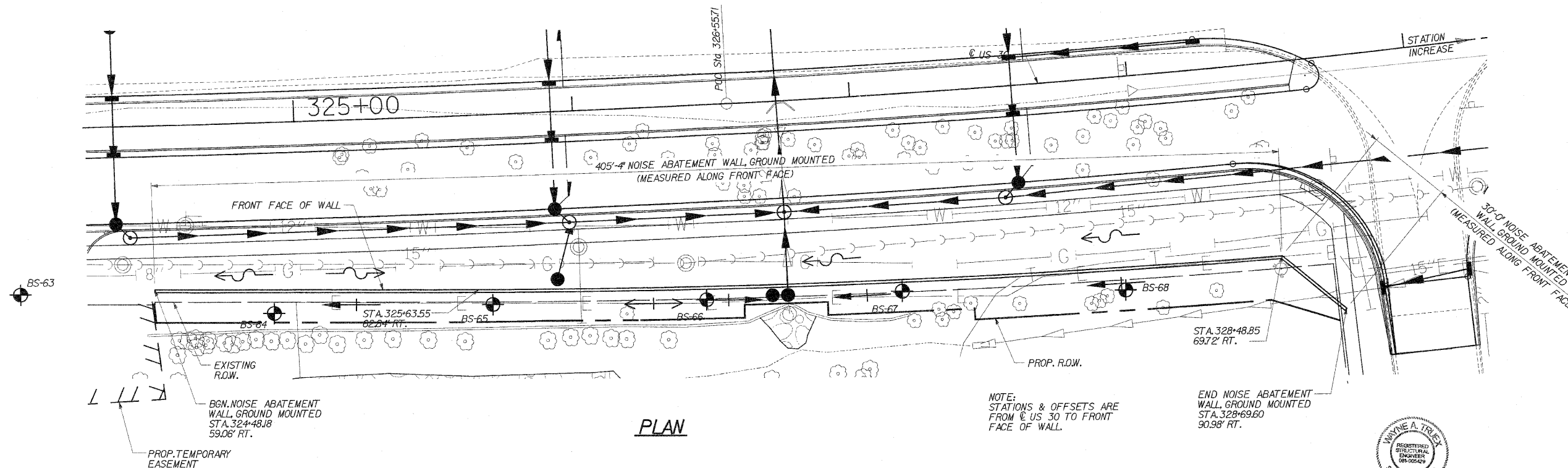
ROUTE NO.	SECTION	COUNTY	TOTAL SHEETS	SHEET NO.
FAP 353	*	WILL	1235	761
FED. ROAD DIST.		ILLINOIS	FED. AID PROJECT	

\* SECT. 12 & 13 WRS-3  
 \* CONTRACT NO. 62479

SHEET NO. 1  
 5 SHEETS



LOCATION SKETCH



**CURVE DATA**

PI STA. = 315+74.0	PI STA. = 339+67.40
Δ = 17° 50' 47" (LT)	Δ = 36° 18' 40" (LT)
D = 0' 32' 44"	D = 1' 25' 57"
R = 10,500.00'	R = 4,000.00'
T = 1,089.38'	T = 1,311.69'
L = 2,170.98'	L = 2,534.98'
E = 56.36'	E = 209.58'
P.C. STA. = 304+84.72	P.C. STA. = 326+55.71
P.T. STA. = 326+55.71	P.T. STA. = 351+90.69

**DESIGN SPECIFICATIONS**

AASHTO 2002 SPECIFICATIONS

**TOTAL BILL OF MATERIALS**

ITEM	UNIT	QUANTITY
NOISE ABATEMENT WALL, GROUND MOUNTED	SQ. FT.	5,617



**DLZ** 85 W. Algonquin Rd. Ste. 220  
 Arlington Heights IL 60005

DESIGNED	ASP
CHECKED	WSP
DRAWN	BGC
CHECKED	WSP

**PROFILE GRADE**

@ P.G.WBD. & EBD.

REVISIONS	
NAME	DATE

**NOISE WALL E**  
**PLAN & ELEVATION**  
 U.S. ROUTE 30 (LINCOLN HIGHWAY)  
 F.A.P. 353 (U.S. 30)  
 SECTION (12 & 13) WRS-3  
 STATION 324+48.18 TO 328+69.60  
 WILL COUNTY