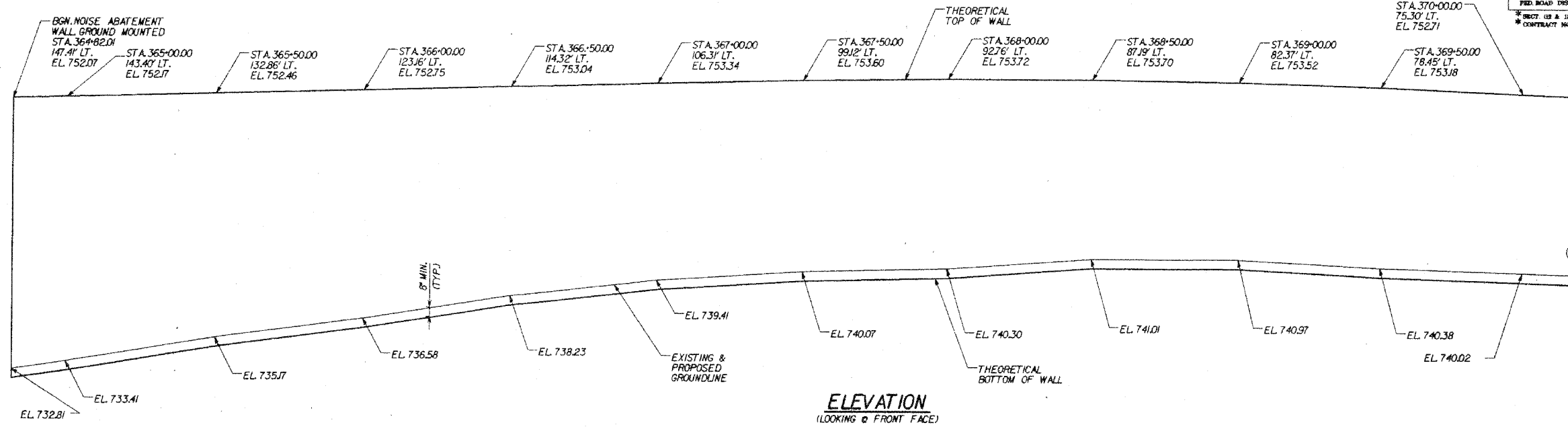


BENCH MARK: BM 239,
 STA. 369+09.026, 35.059' LT., ELEV. 739.727
 SET 1/2" DIAMETER IRON ROD 1/2" NORTH
 OF BIKE PATH ON THE NORTH SIDE OF
 ROUTE 30, 1/2" EAST OF ELSNER ROAD.

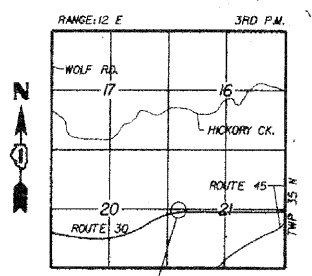
STATE OF ILLINOIS
 DEPARTMENT OF TRANSPORTATION

ROUTE NO.	SECTION	COUNTY	TOTAL SHEETS	SHEET NO.
FAP 353	*	WILL	1235	766
FED. ROAD DIST.	BLADWORTH	FED. AID PROJECT		

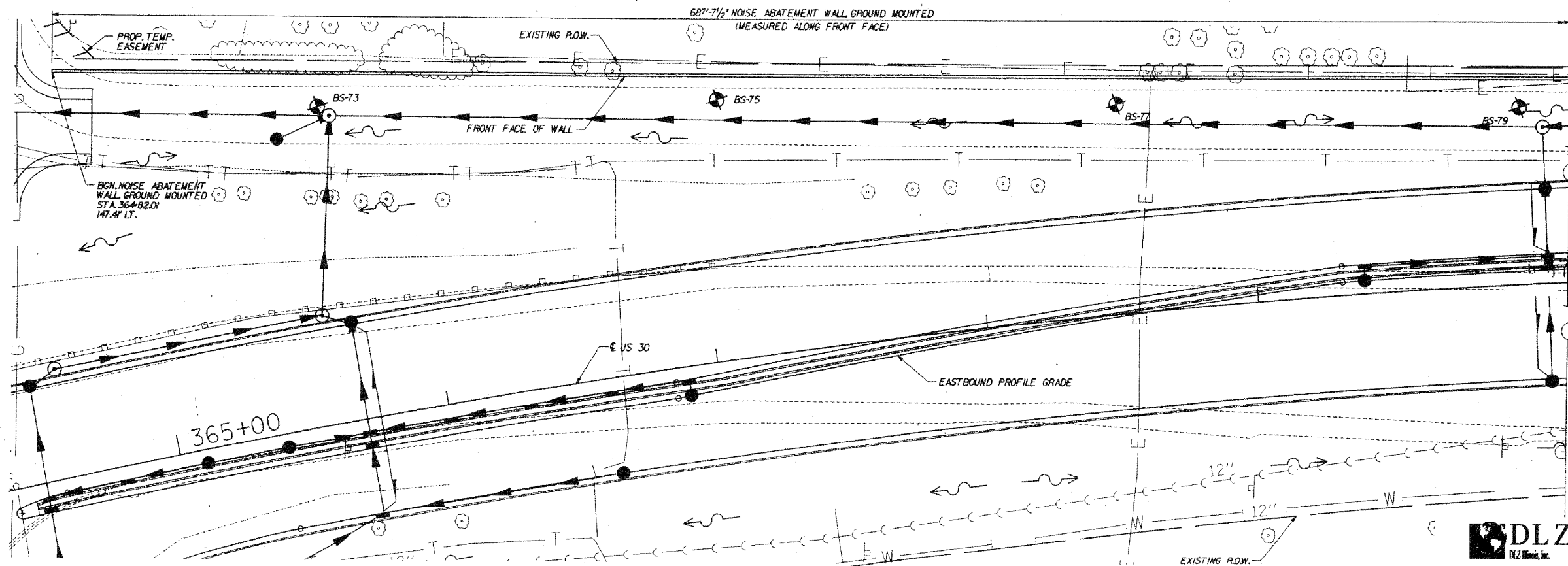
SHEET NO. 1
 6 SHEETS



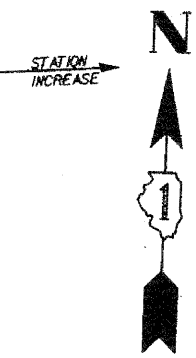
DESIGN SPECIFICATIONS
 AASHTO 2002 SPECIFICATIONS



LOCATION SKETCH

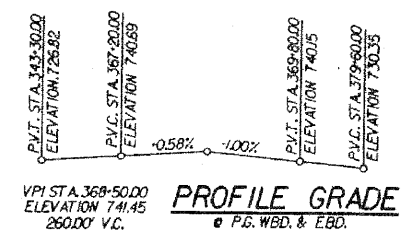


MATCH LINE @ 370+13.90



DLZ 85 W. Algonquin Rd., Ste. 220
 Arlington Heights, IL 60005

DESIGNED	ASP
CHECKED	WSP
DRAWN	BOC
CHECKED	WSP



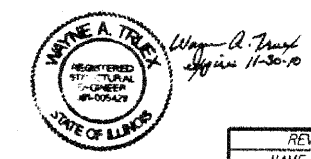
CURVE DATA

PI STA. 362+63.70
 Δ = 32° 58' 28" (RT)
 D = 1' 45" 17"
 R = 3,265.00'
 T = 966.33'
 L = 1,879.01'
 E = 140.00'
 P.C. STA. 352+97.37
 P.T. STA. 371+76.39

PLAN

TOTAL BILL OF MATERIALS

ITEM	UNIT	QUANTITY
NOISE ABATEMENT WALL GROUND MOUNTED	SQ. FT.	10,189



REVISIONS

NAME	DATE

NOISE WALL F
PLAN & ELEVATION
 U.S. ROUTE 30 (LINCOLN HIGHWAY)
 F.A.P. 353 (U.S. 30)
 SECTION (12 & 13) WRS-3
 STATION 364+83.13 TO 371+55.34
 WILL COUNTY