

BENCH MARK: BM 240  
 STA. 375+29.53, 55.81' RT., ELEV. 734.45  
 SET SQUARE ON TOP OF CURB AT EASTERLY  
 TIP OF MEDIAN OF ENTRANCE TO  
 'CONTINENTAL PANCAKE' RESTAURANT  
 EXISTING STRUCTURE: NONE

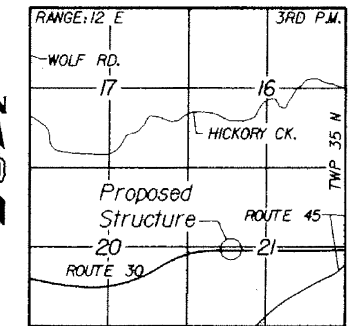
STATE OF ILLINOIS  
 DEPARTMENT OF TRANSPORTATION

ROUTE NO.	SECTION	COUNTY	TOTAL SHEETS	SHEET NO.
FAP 353	*	WILL	1235	771
FED. ROAD DIST.		ILLINOIS	FED. AID PROJECT	

SHEET NO. 1  
 10 SHEETS

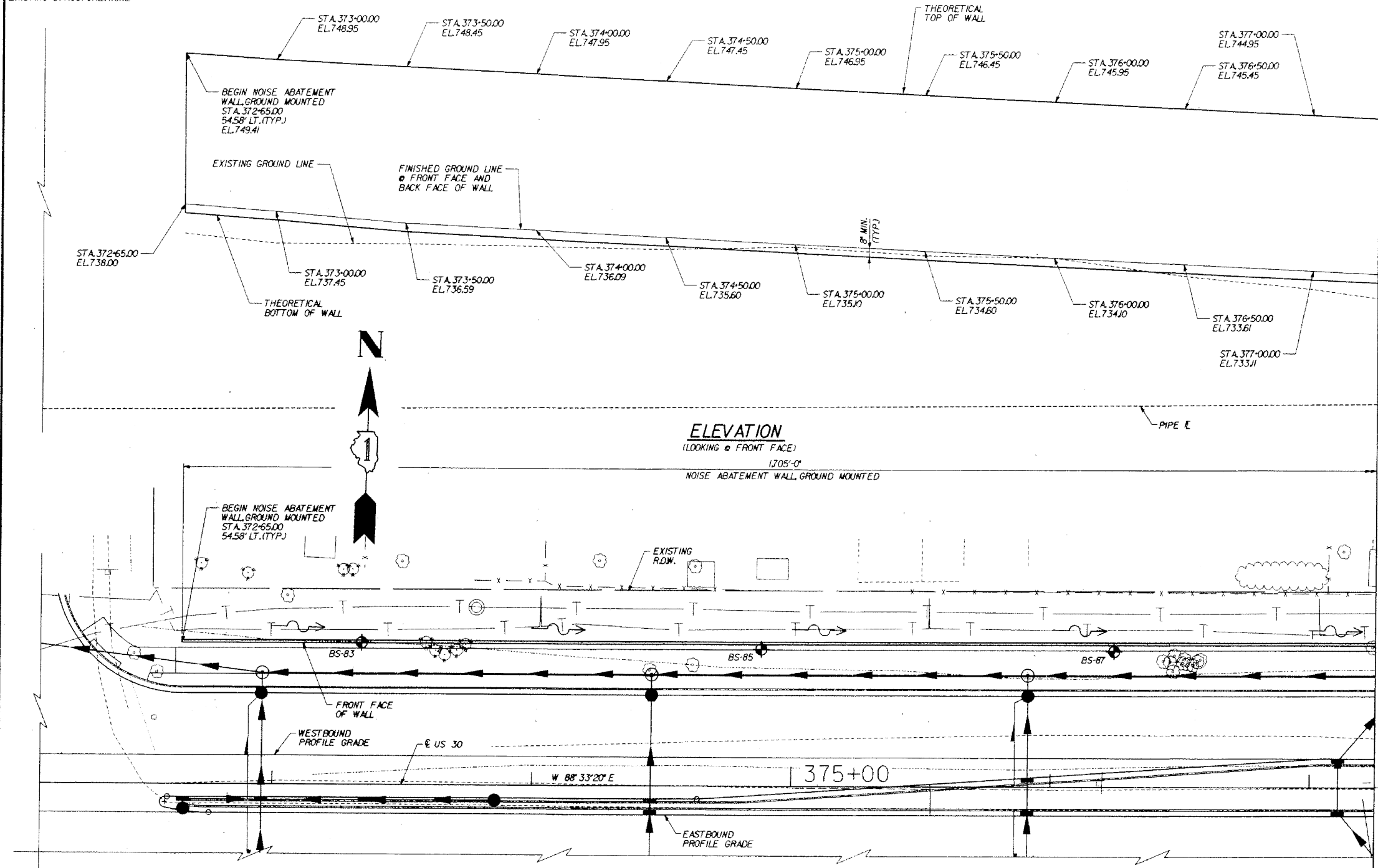
TOTAL BILL OF MATERIALS

ITEM	UNIT	QUANTITY
NOISE ABATEMENT WALL GROUND MOUNTED	SO. FT.	21,505



LOCATION SKETCH

DESIGN SPECIFICATIONS  
 2002 AASHTO SPECIFICATIONS FOR HIGHWAY BRIDGES



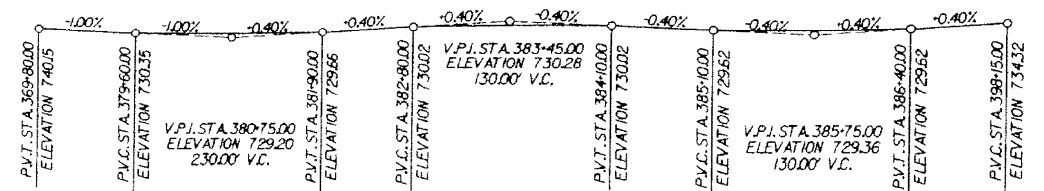
ELEVATION  
 (LOOKING @ FRONT FACE)  
 1705'-0"  
 NOISE ABATEMENT WALL, GROUND MOUNTED

PLAN

MATCH LINE STA. 377+25

STATION INCREASE

NOTE:  
 STATIONS AND OFFSETS ARE  
 FROM E OF US 30 TO THE FRONT  
 FACE OF WALL



PROFILE GRADE  
 © P.G. WBD & EBD.



*Wayne A. Trex*  
 11-30-10

**DLZ** 85 W. Algonquin Rd. Ste. 220  
 Arlington Heights IL 60005

**NOISE WALL 'G'  
 GENERAL PLAN I**  
 U.S. ROUTE 30 (LINCOLN HIGHWAY)  
 F.A.P. 353 (U.S. 30)  
 SECTION (12 & 13) WRS-3  
 STATION 372+65.00 TO 389+70.00  
 WILL COUNTY

DESIGNED	ASP
CHECKED	WSP
DRAWN	LNB
CHECKED	ASP

REVISIONS	
NAME	DATE