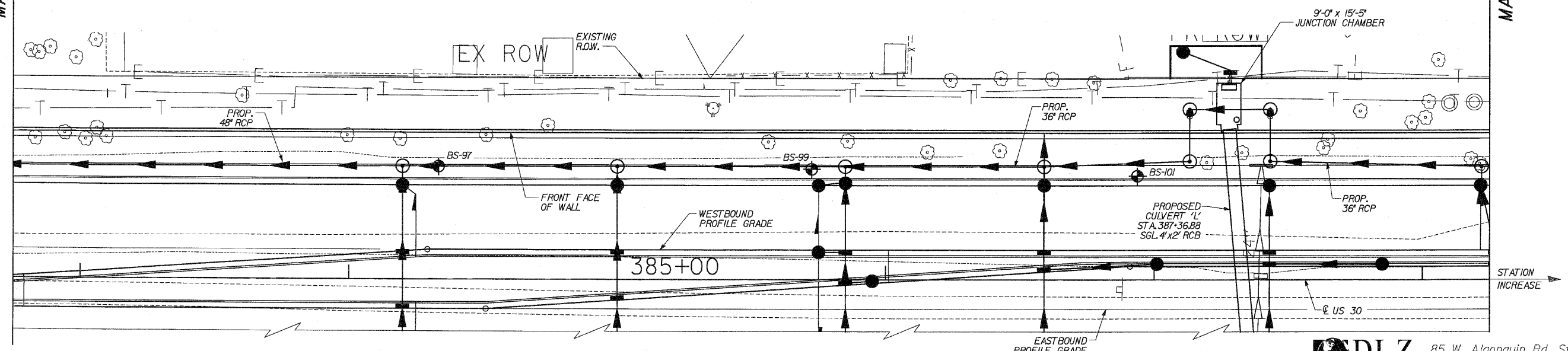


**ELEVATION**  
(LOOKING @ FRONT FACE)  
\* DENOTES BACK FACE ELEVATION GIVEN AS CONTROLLING ELEVATION.

MATCH LINE STA 382+75

MATCH LINE STA 388+25

1705'-0"  
NOISE ABATEMENT WALL, GROUND MOUNTED



**PLAN**

NOTE:  
STATIONS AND OFFSETS ARE FROM Q US 30 TO THE FRONT FACE OF WALL

DESIGNED	ASP
CHECKED	WSP
DRAWN	LNB
CHECKED	ASP

REVISIONS	
NAME	DATE

**DLZ**  
DLZ Illinois, Inc. 85 W. Algonquin Rd. Ste. 220  
Arlington Heights IL 60005

**NOISE WALL 'G'**  
**GENERAL PLAN III**  
U.S. ROUTE 30 (LINCOLN HIGHWAY)  
F.A.P. 353 (U.S. 30)  
SECTION (12 & 13) WRS-3  
STATION 372+65.00 TO 389+70.00  
WILL COUNTY