

PROP. CURVE P-3
 PI STA. = 100+25.54
 $\Delta = 12^\circ 18' 48''$ (RT)
 $D = 1^\circ 08' 45''$
 $R = 4,999.98'$
 $T = 539.34'$
 $L = 1,074.53'$
 $E = 29.01'$
 $e =$
 T.R. =
 S.E. RUN =
 P.C. STA. = 94+86.20
 P.T. STA. = 105+60.73

CP# 202

CURVE P-3
 P.I. STATION = 100+25.54 N 1,958,243.727 E 973,276.562
 P.C. STATION = 94+86.20 N 1,958,369.308 E 972,752.043
 P.T. STATION = 105+60.73 N 1,958,009.177 E 973,762.234

CURVE P-4
 P.I. STATION = 126+61.08 N 1,957,095.775 E 975,653.575
 P.C. STATION = 123+14.42 N 1,957,246.531 E 975,341.411
 P.T. STATION = 130+07.71 N 1,956,952.259 E 975,969.132

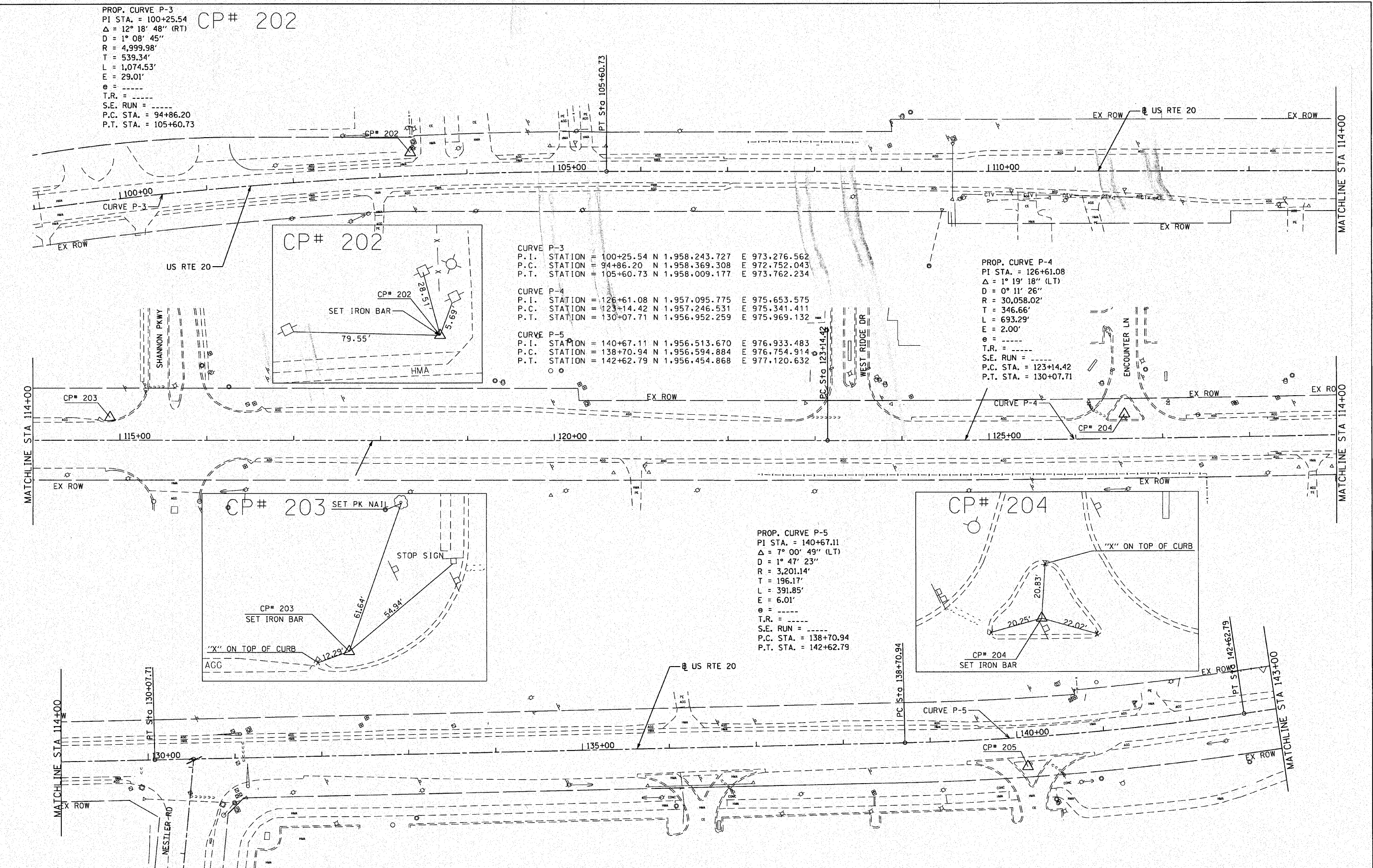
CURVE P-5
 P.I. STATION = 140+67.11 N 1,956,513.670 E 976,933.483
 P.C. STATION = 138+70.94 N 1,956,594.884 E 976,754.914
 P.T. STATION = 142+62.79 N 1,956,454.868 E 977,120.632

PROP. CURVE P-4
 PI STA. = 126+61.08
 $\Delta = 1^\circ 19' 18''$ (LT)
 $D = 0^\circ 11' 26''$
 $R = 30,058.02'$
 $T = 346.66'$
 $L = 693.29'$
 $E = 2.00'$
 $e =$
 T.R. =
 S.E. RUN =
 P.C. STA. = 123+14.42
 P.T. STA. = 130+07.71

PROP. CURVE P-5
 PI STA. = 140+67.11
 $\Delta = 7^\circ 00' 49''$ (LT)
 $D = 1^\circ 47' 23''$
 $R = 3,201.14'$
 $T = 196.17'$
 $L = 391.85'$
 $E = 6.01'$
 $e =$
 T.R. =
 S.E. RUN =
 P.C. STA. = 138+70.94
 P.T. STA. = 142+62.79

KE 4-21-2010

FILE NAME: P:\2009\ME09006_Ver-Per-PRINT\CADD\W05_US20\Shots\0162529-shr-ATB1.dgn
 USER NAME: Millennium Professional Services



| | | | | | | | | |
|--|---|--|--|---|--|---|---|---|
| | 200 22ND Street, Suite 216, Lombard, IL 60148 630.765.8110 voice, 630.839.2566 fax WWW.MPS-IL.COM | DESIGNED - TVN DRAWN - TVN CHECKED - RPD DATE - 4/21/2010 | REVISED - REVISED - REVISED - REVISED - | STATE OF ILLINOIS DEPARTMENT OF TRANSPORTATION | U.S. ROUTE 20 EAST OF PLANK ROAD TO WELD ROAD | ALIGNMENT, TIES & BENCHMARKS | F.A.P. RTE. 345 SECTION BWR5-2 COUNTY KANE TOTAL SHEETS 72 SHEET NO. 10 | CONTRACT NO. 62529 FED. ROAD DIST. NO. 1 ILLINOIS FED. AID PROJECT |
| | MILLENNIA PROFESSIONAL SERVICES | | | | SCALE: SHEET NO. OF SHEETS STA. TO STA. | | | |

P:\2009\ME09006_Ver-Per-PRINT\CADD\W05_US20\Shots\0162529-shr-ATB1.dgn