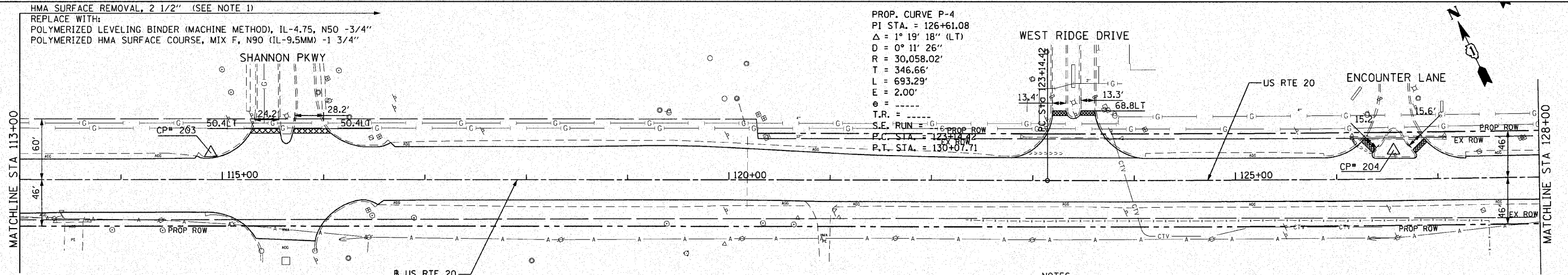
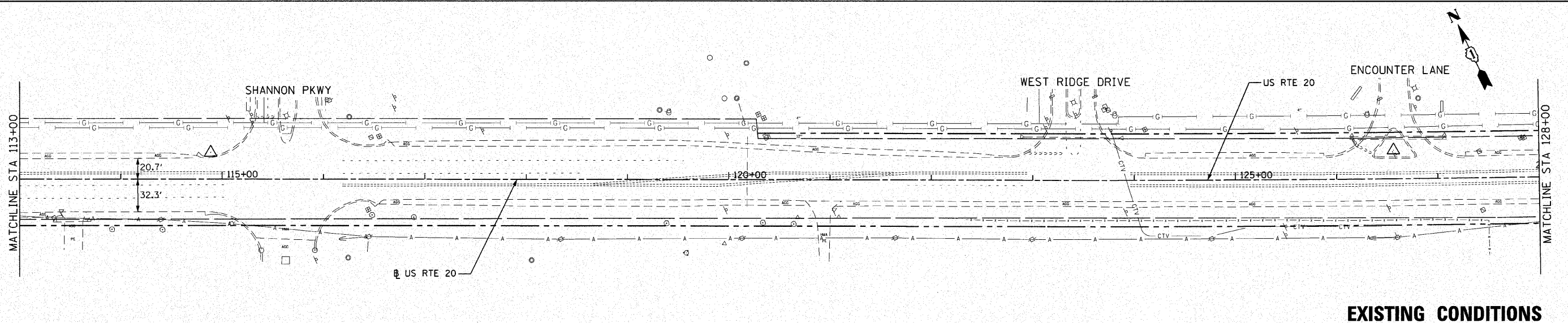


DATE	
BY	
REVISIONS	
NO.	
DATE	
BY	
REVISIONS	
NO.	
DATE	
BY	
REVISIONS	
NO.	
DATE	
BY	
REVISIONS	
NO.	

DATE	
BY	
REVISIONS	
NO.	
DATE	
BY	
REVISIONS	
NO.	
DATE	
BY	
REVISIONS	
NO.	

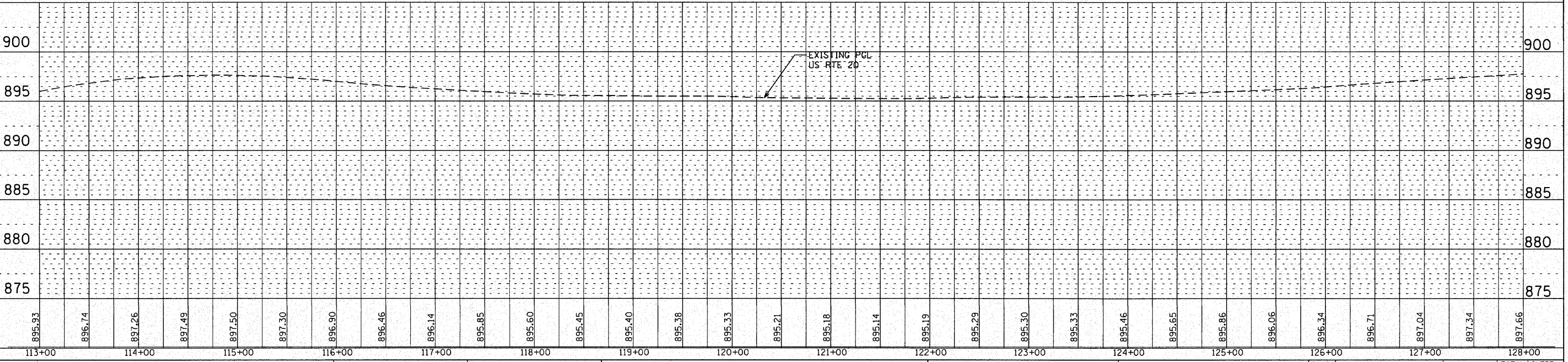
FILE NAME: P:\2009\ME09086\_Ver-Var-Plan\CADD\W05\_US20\_Shts\162529-sh1-PP-2.DGN  
 PLOT SCALE: 1" = 40'  
 USER: JMS



PROP. CURVE P-4  
 PI STA. = 126+61.08  
 $\Delta = 1^{\circ} 19' 18''$  (LT)  
 $D = 0^{\circ} 11' 26''$   
 $R = 30,058.02'$   
 $T = 346.66'$   
 $L = 693.29'$   
 $E = 2.00'$   
 $T.R. = ---$   
 S.E. RUN = -G  
 P.C. STA. = 123+14.42  
 P.T. STA. = 130+07.71

PROPOSED 4.5' HMA SURFACE REMOVAL BUTT JOINT  
 SEE BUTT JOINTS AND HMA TAPER DETAILS (B032)

NOTES:  
 1. THE CONTRACTOR SHALL CONDUCT THE BITUMINOUS SURFACE REMOVAL OPERATION PRIOR TO THE PAVEMENT PATCHING OPERATION. PAVEMENT PATCHING LOCATIONS WILL BE DETERMINED BY THE RESIDENT ENGINEER.



DESIGNED	TVN	REVISED	
DRAWN	TVN	REVISED	
CHECKED	RPD	REVISED	
DATE	10/25/2010	REVISED	

**MILLENNIA PROFESSIONAL SERVICES**  
 200 32ND Street, Suite 216, Lombard, IL 60148  
 630.785.8110 voice, 630.839.2566 fax  
 WWW.MPS-IL.COM

**STATE OF ILLINOIS  
 DEPARTMENT OF TRANSPORTATION**

**U.S. ROUTE 20  
 EAST OF PLANK ROAD TO WELD ROAD**

**PLAN AND PROFILE**

F.A.P. RTE.	SECTION	COUNTY	TOTAL SHEETS	SHEET NO.
345	BWRS-2	KANE	72	13
FED. ROAD DIST. NO. 1 ILLINOIS FED. AID PROJECT			CONTRACT NO. 62529	

SCALE: SHEET NO. OF SHEETS STA. TO STA.

P:\2009\ME09086\_Ver-Var-Plan\CADD\W05\_US20\_Shts\162529-sh1-PP-2.DGN