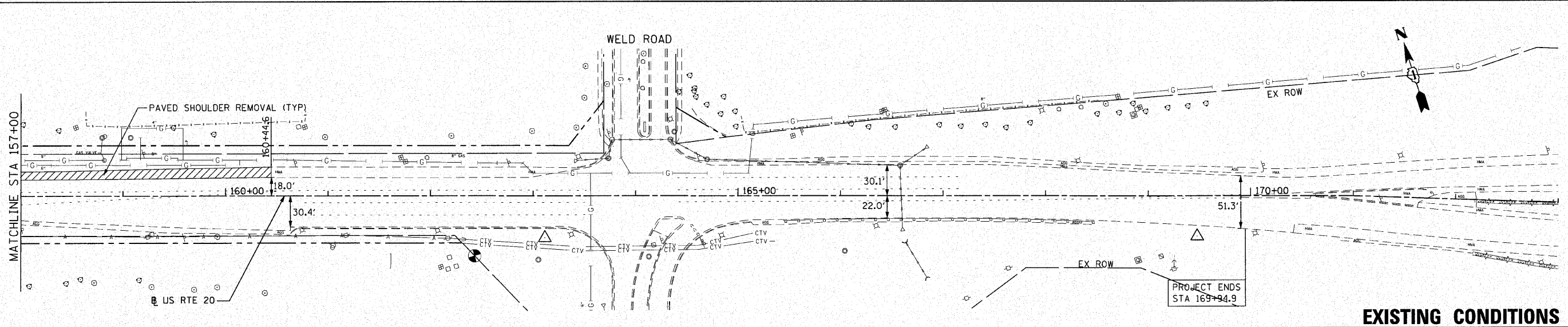


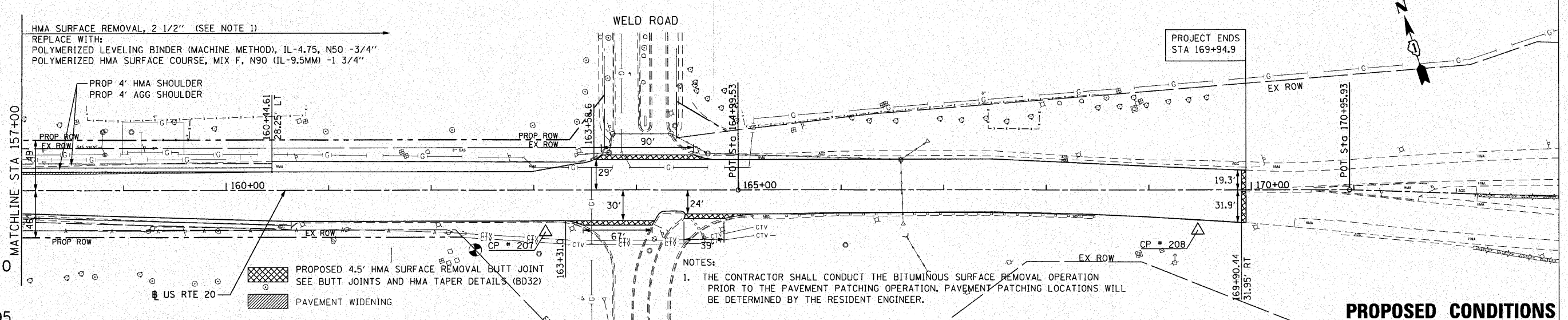
DATE	
BY	
REVIEWED	
PLANNED	
NOTED	
CHECKED	
FILE NAME	

DATE	
BY	
REVIEWED	
PLANNED	
NOTED	
CHECKED	
FILE NAME	

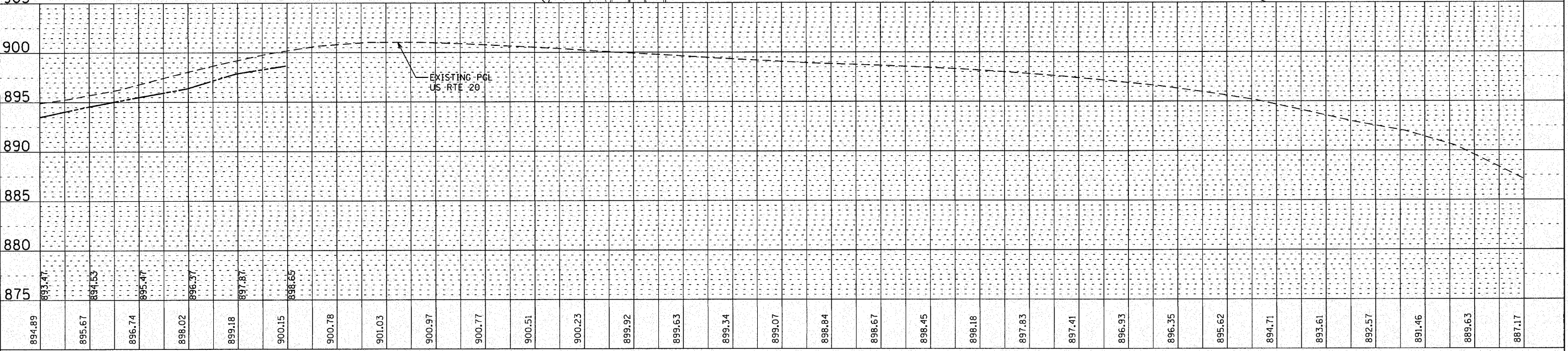
FILE NAME = P:\2009\ME09086\_Ver\Var\PH1\CADD\W05\_US20\Sh15\162529.dwg  
 PLOT SCALE = 1"=50'  
 USER NAME = Millennium Professional Services



**EXISTING CONDITIONS**



**PROPOSED CONDITIONS**



894.89	895.67	896.74	898.02	899.18	900.15	900.78	901.03	900.97	900.77	900.51	900.23	899.92	899.63	899.34	899.07	898.84	898.67	898.45	898.18	897.83	897.41	896.93	896.35	895.62	894.71	893.61	892.57	891.46	889.63	887.17
--------	--------	--------	--------	--------	--------	--------	--------	--------	--------	--------	--------	--------	--------	--------	--------	--------	--------	--------	--------	--------	--------	--------	--------	--------	--------	--------	--------	--------	--------	--------

**MILLENNIA PROFESSIONAL SERVICES**  
 200 32ND Street, Suite 216, Lombard, IL 60148  
 630.745.0110 voice, 630.839.2566 fax  
 WWW.MPS-IL.COM

DESIGNED	TVN	REVISED	
DRAWN	TVN	REVISED	
CHECKED	RPD	REVISED	
DATE	10/25/2010	REVISED	

**STATE OF ILLINOIS  
 DEPARTMENT OF TRANSPORTATION**

**U.S. ROUTE 20  
 EAST OF PLANK ROAD TO WELD ROAD**  
 SCALE: 1"=50' SHEET NO. OF 16 SHEETS STA. 157+00 TO STA. 169+60

F.A.P. RTE.	SECTION	COUNTY	TOTAL SHEETS	SHEET NO.
345	BWRS-2	KANE	72	16
CONTRACT NO. 62529				