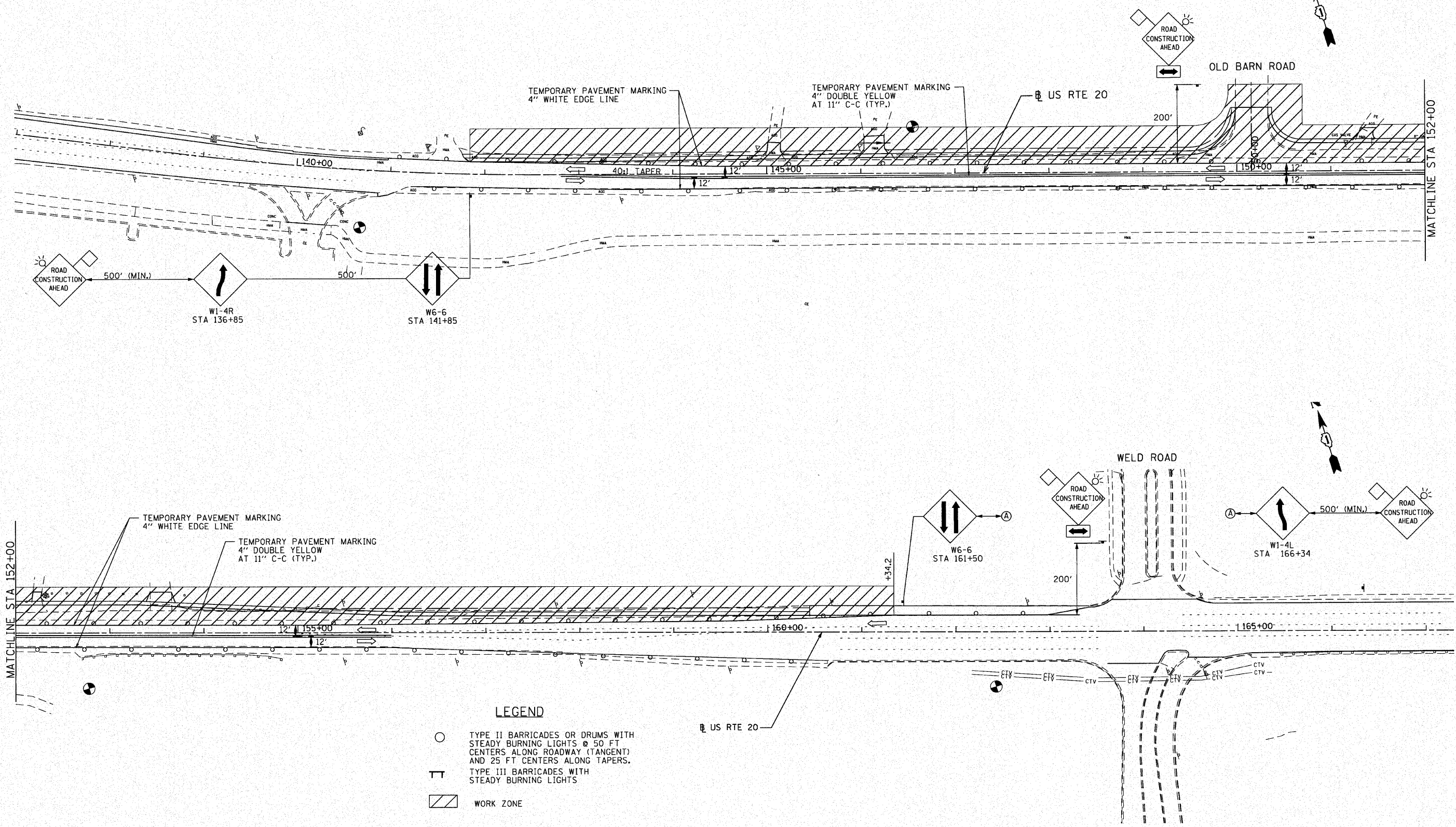



FILE NAME: F:\2009\ME09006_VerVer_Plan\CADD\W05_US20\Shets\DI62529-sh1-MOT11.dgn
 USER: Mjillennia Professional Services



- LEGEND**
- TYPE II BARRICADES OR DRUMS WITH STEADY BURNING LIGHTS @ 50 FT CENTERS ALONG ROADWAY (TANGENT) AND 25 FT CENTERS ALONG TAPERS.
 - ⊥ TYPE III BARRICADES WITH STEADY BURNING LIGHTS
 - ▨ WORK ZONE


 200 22ND Street, Suite 216, Lombard, IL 60148
 630.705.0110 voice, 630.839.2566 fax
 WWW.MPS-IL.COM
MILLENNIA PROFESSIONAL SERVICES

DESIGNED - TVN	REVISED -
DRAWN - TVN	REVISED -
CHECKED - RPD	REVISED -
DATE - 4/20/2010	REVISED -

STATE OF ILLINOIS
DEPARTMENT OF TRANSPORTATION

U.S. ROUTE 20
EAST OF PLANK ROAD TO WELD ROAD

SUGGESTED STAGES OF CONSTRUCTION
AND TRAFFIC CONTROL
STAGE - 1

F.A.P. RTE.	SECTION	COUNTY	TOTAL SHEETS	SHEET NO.
345	BWRS-2	KANE	72	20
FED. ROAD DIST. NO. 1 ILLINOIS FED. AID PROJECT			CONTRACT NO. 62529	

MOT-11

F:\2009\ME09006_VerVer_Plan\CADD\W05_US20\Shets\DI62529-sh1-MOT11.dgn